

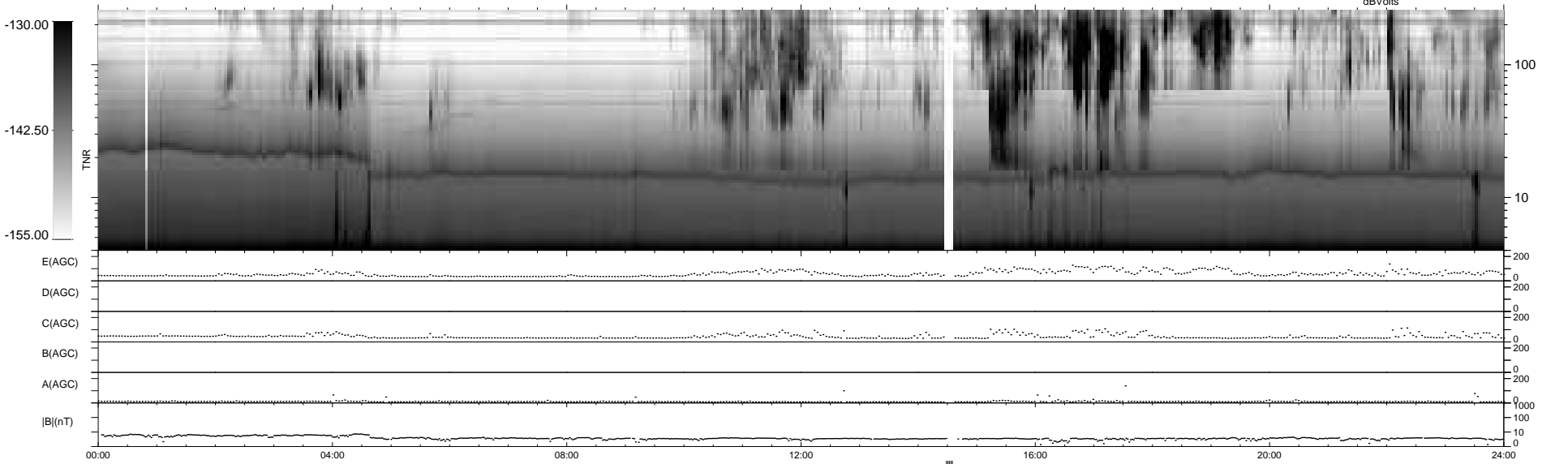
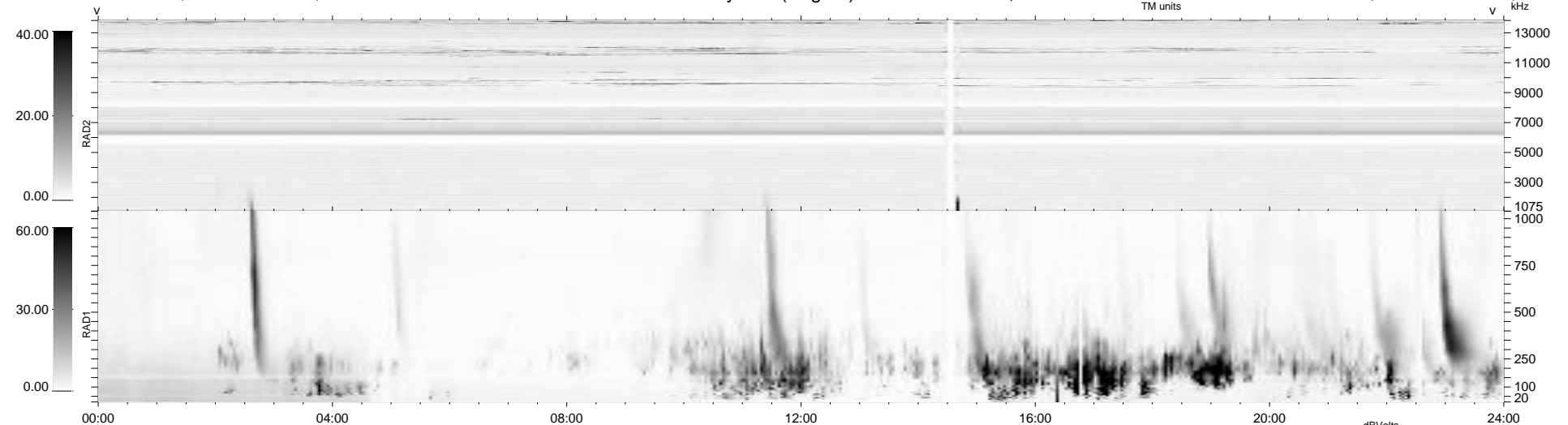
14 bad + 920 good MF/939MF projected (97%) - 5 missing MFs
 Avg interval = 180 secs
 Re = -201.37 (200.17, 7.71, -20.53 GSE)

windlib 2.0b

LZ version = v04

WIND/WAVES Summary Plot (Page 1) for 25-AUG-2010, DOY = 237

DAILY 2010-08-31 13:23:06
 Re = 201.54 (200.19, 11.21, -20.48 GSE)



```

RAD2
Antenna Ey .....
Mode LIN(1) .....
SUM/SEP SEP .....
Toggle OFF .....

RAD1
Antenna Ex .....
Mode LIS(2,4) .....
SUM/SEP SUM .....
Toggle OFF .....

TNR
Antenna ExEy .....
Mode A-32 .....
Sweep ACE .....
  
```