

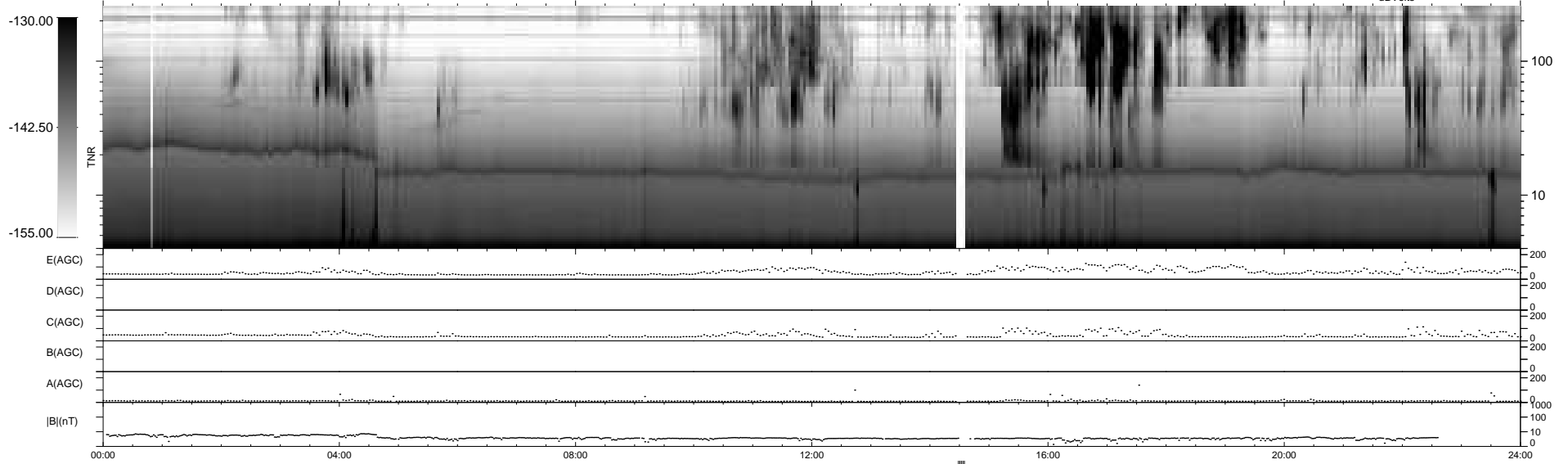
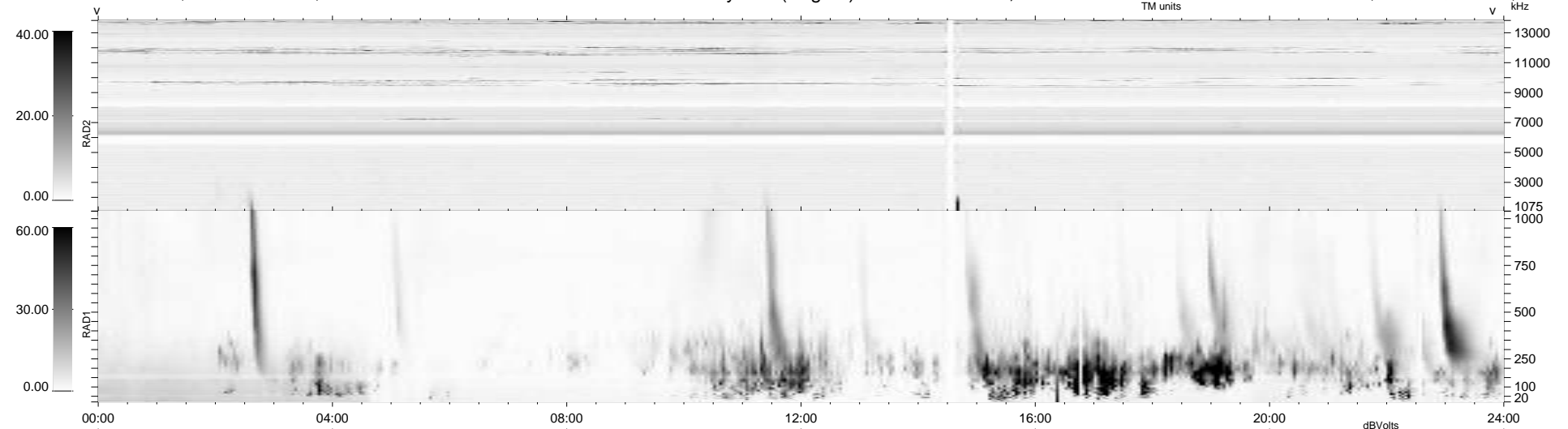
14 bad + 920 good MF/939MF projected (97%) - 5 missing MFs
 Avg interval = 180 secs
 Re = -201.37 (200.17, 7.71, -20.53 GSE)

windlib 2.0b

LZ version = v03

WIND/WAVES Summary Plot (Page 1) for 25-AUG-2010, DOY = 237

DAILY 2010-08-30 11:23:09
 Re = 201.54 (200.19, 11.21, -20.48 GSE)



RAD2
 Antenna Ey
 Mode LIN(1)
 SUM/SEP SEP
 Toggle OFF

RAD1
 Antenna Ex
 Mode LIS(2,4)
 SUM/SEP SUM
 Toggle OFF

TNR
 Antenna ExEy
 Mode A-32
 Sweep ACE