

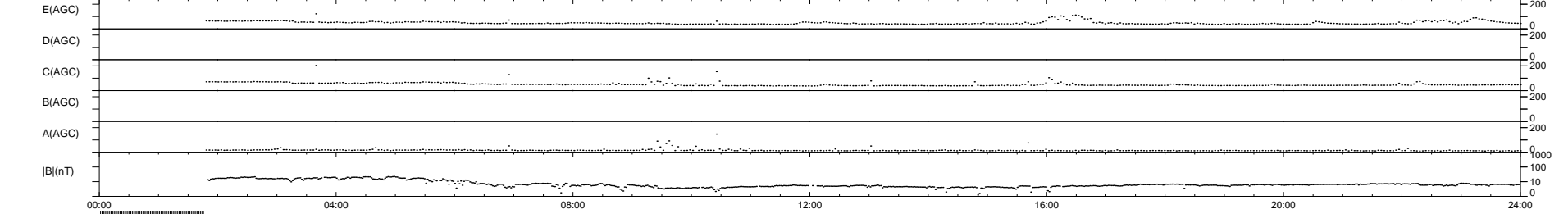
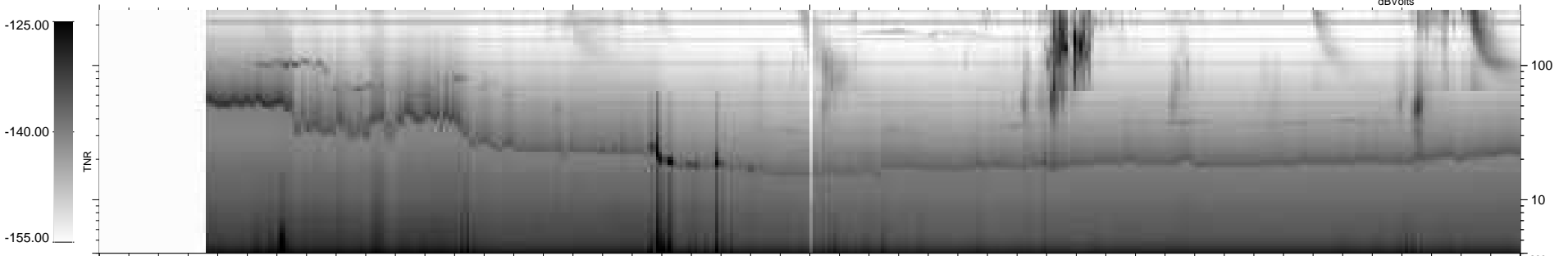
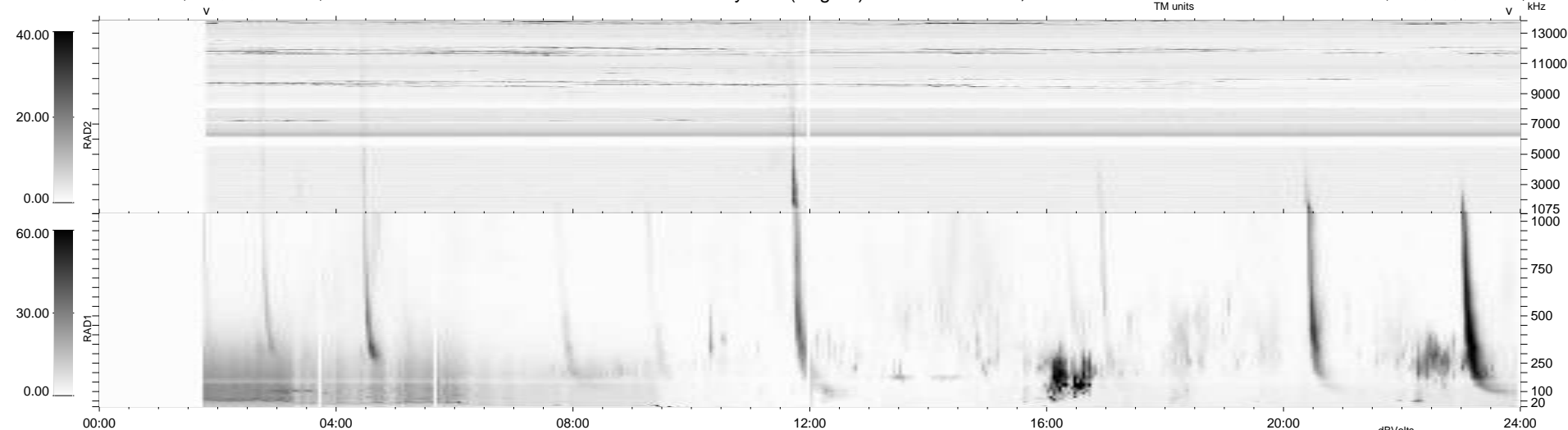
14 bad + 856 good MF/939MF projected (91%) - 69 missing MFs
Avg interval = 180 secs
Re = -201.30 (200.20, 4.44, -20.56 GSE)

windlib 2.0b

LZ version = v01

WIND/WAVES Summary Plot (Page 1) for 24-AUG-2010, DOY = 236

DAILY 2010-08-25 15:23:06
Re = 201.37 (200.17, 7.68, -20.53 GSE)



RAD2 Antenna Mode SUM/SEP Toggle
RAD1 Antenna Mode SUM/SEP Toggle
TNR Antenna Mode Sweep