

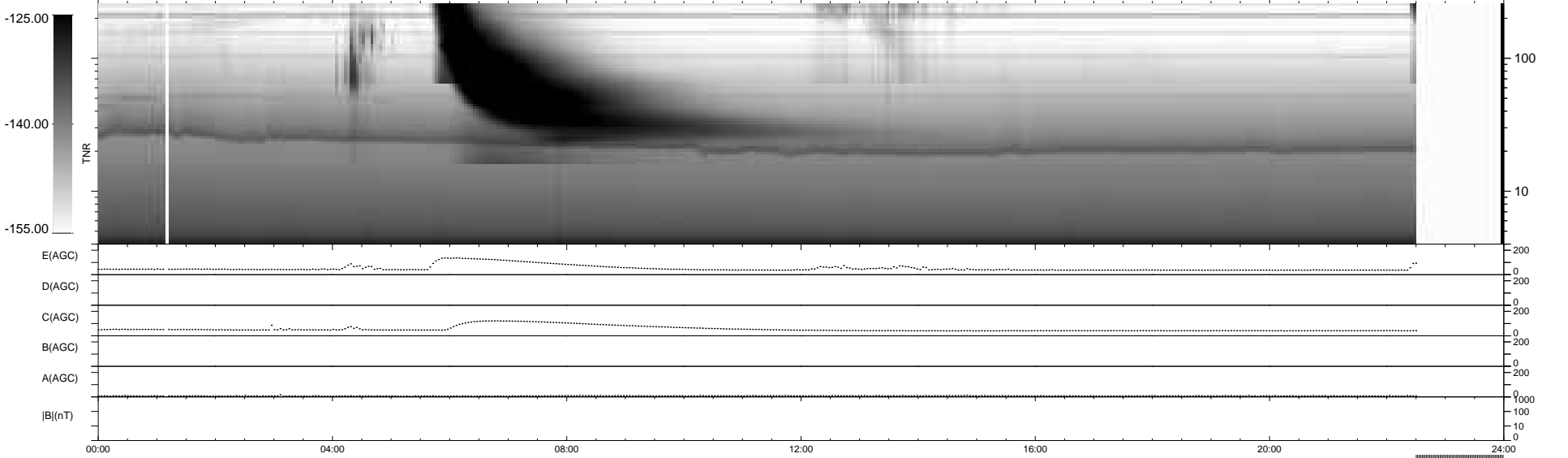
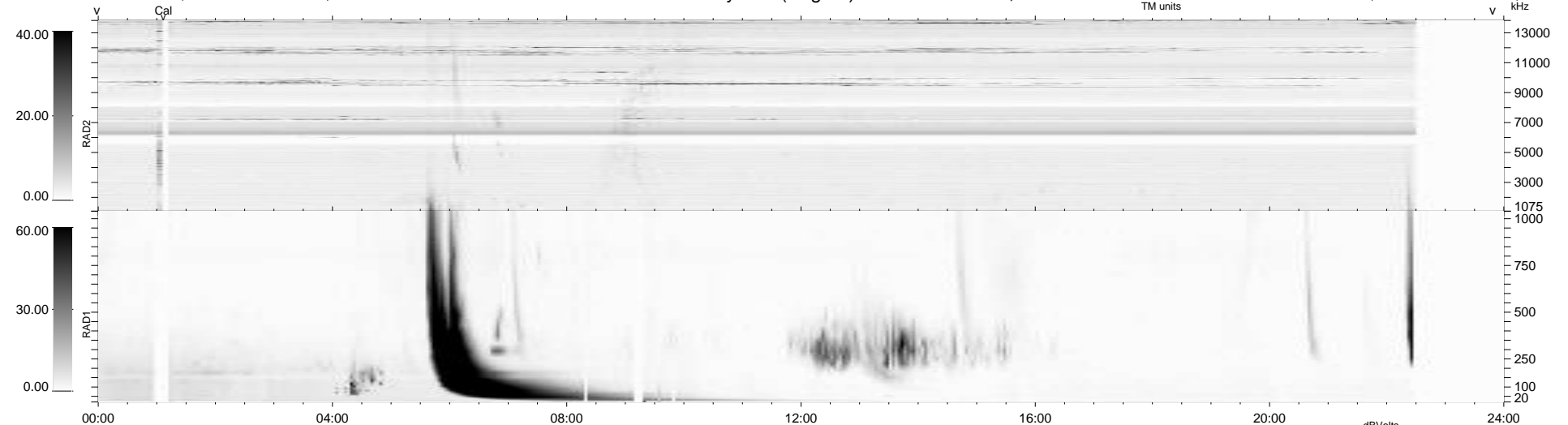
12 bad + 868 good MF/939MF projected (92%) - 59 missing MFs
 Avg interval = 180 secs
 Re = 202.96 (201.23, -17.22, -20.01 GSE)

windlib 2.0b

LZ version = v01

WIND/WAVES Summary Plot (Page 1) for 18-AUG-2010, DOY = 230

DAILY 2010-08-19 16:59:04
 Re = 202.45 (200.98, -13.66, -20.19 GSE)



RAD2
 Antenna Ey
 Mode LIN(1)
 SUM/SEP SEP
 Toggle OFF
 RAD1
 Antenna Ex
 Mode LIS(2,4)
 SUM/SEP SUM
 Toggle OFF
 TNR
 Antenna ExEy
 Mode A-32
 Sweep ACE