

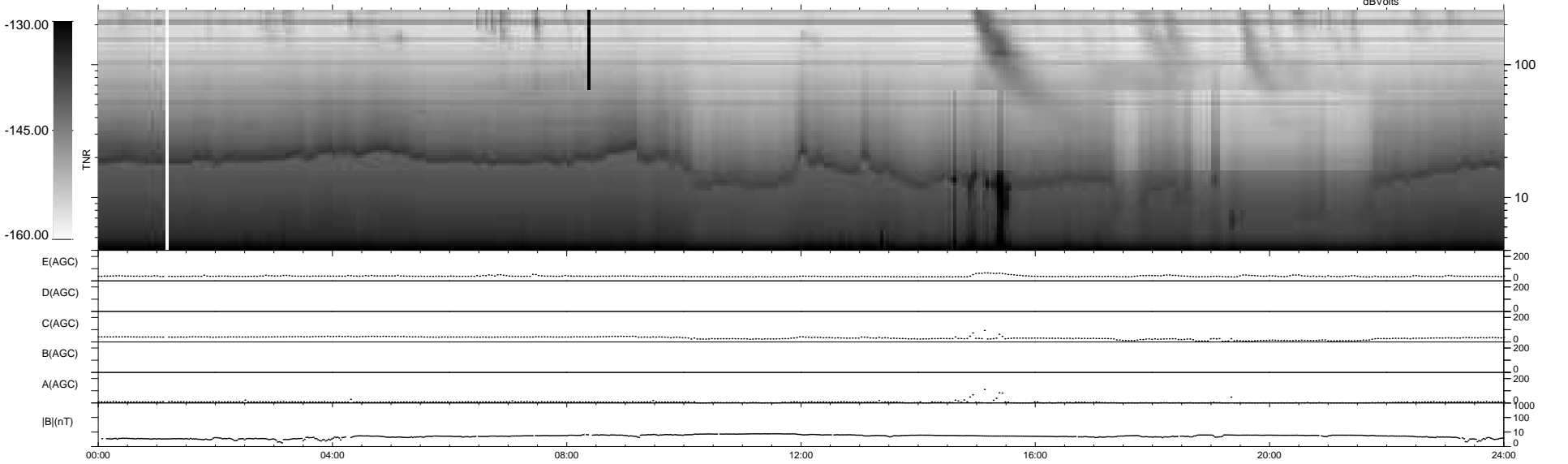
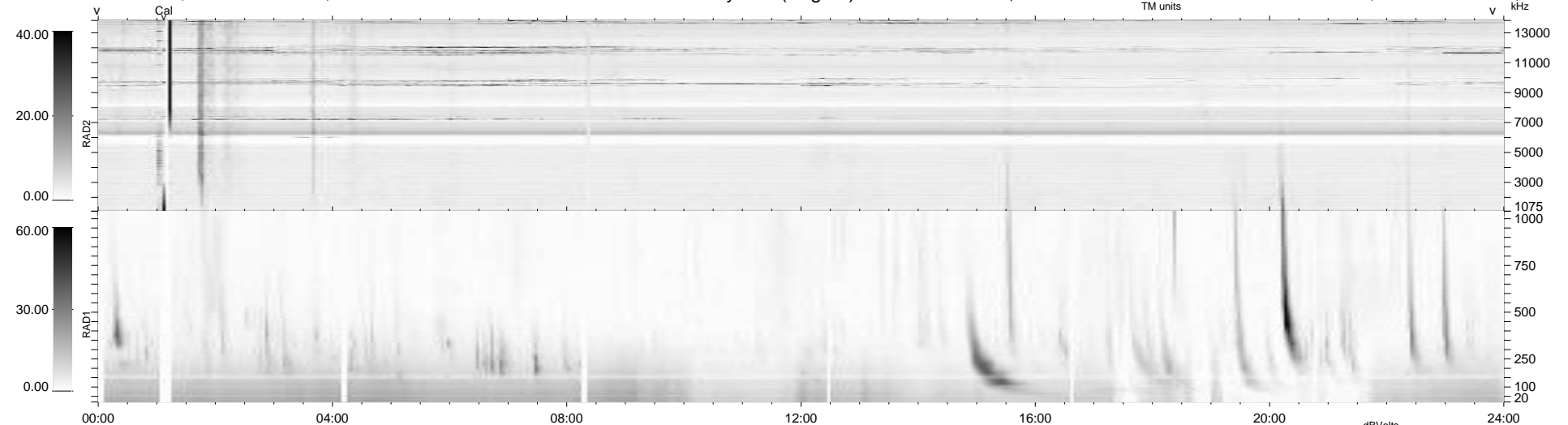
16 bad + 923 good MF/939MF projected (98%) - 0 missing MFs  
 Avg interval = 180 secs  
 Re = 211.36 (204.15, -52.21, -16.34 GSE)

windlib 2.0b

LZ version = v01

### WIND/WAVES Summary Plot (Page 1) for 08-AUG-2010, DOY = 220

DAILY 2010-08-09 14:59:07  
 Re = 210.38 (203.91, -48.95, -16.84 GSE)



RAD2  
 Antenna Ey .....  
 Mode LIN(1) .....  
 SUM/SEP SEP .....  
 Toggle OFF .....  
 RAD1  
 Antenna .....  
 Mode .....  
 SUM/SEP .....  
 Toggle .....  
 TNR  
 Antenna ExEy .....  
 Mode A-32 .....  
 Sweep ACE .....