

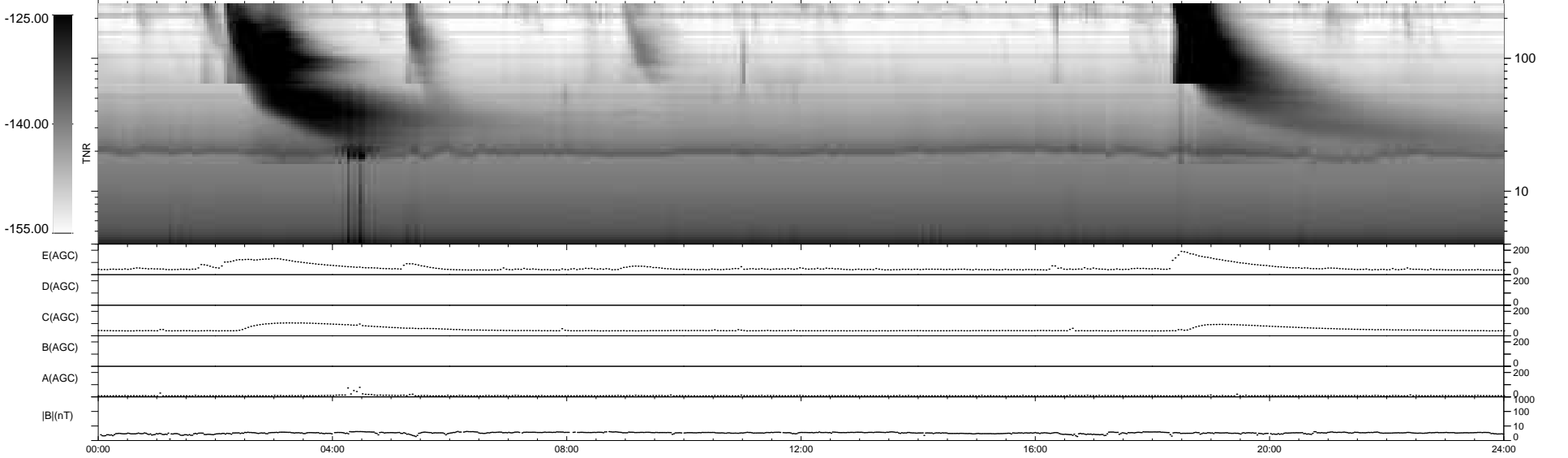
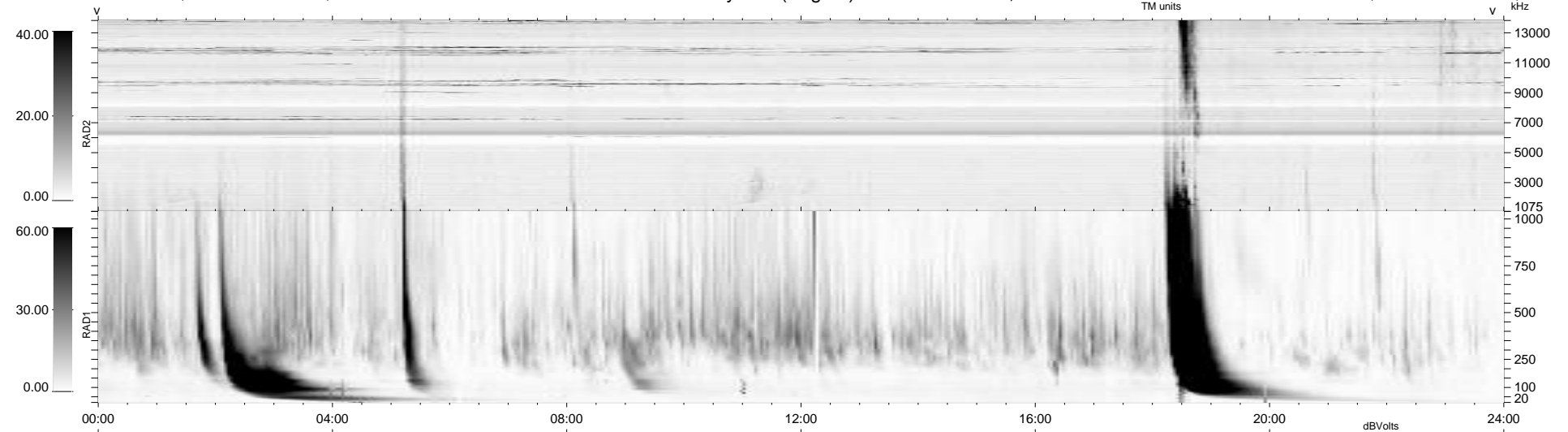
11 bad + 929 good MF/940MF projected (98%) - 0 missing MFs
 Avg interval = 180 secs
 Re = 212.36 (204.39, -55.40, -15.81 GSE)

windlib 2.0b

LZ version = v02

WIND/WAVES Summary Plot (Page 1) for 07-AUG-2010, DOY = 219

DAILY 2010-08-09 14:00:16
 Re = 211.37 (204.16, -52.24, -16.34 GSE)



RAD2
 Antenna Ey
 Mode LIN(1)
 SUM/SEP SEP
 Toggle OFF
 RAD1
 Antenna Ex
 Mode LIS(2,4)
 SUM/SEP SUM
 Toggle OFF
 TNR
 Antenna ExEy
 Mode A-32
 Sweep ACE