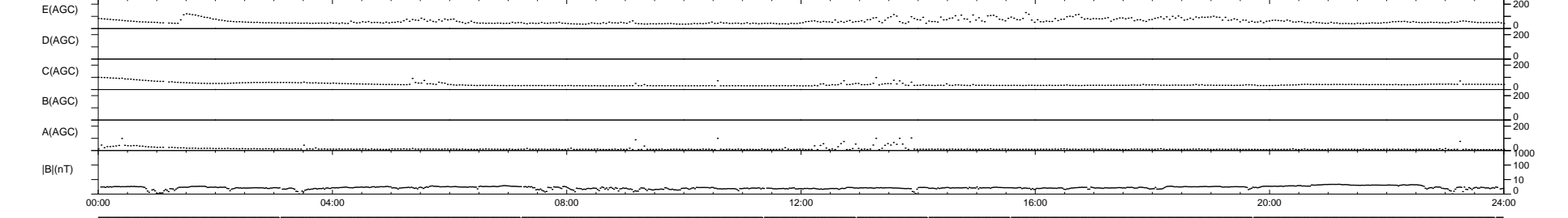
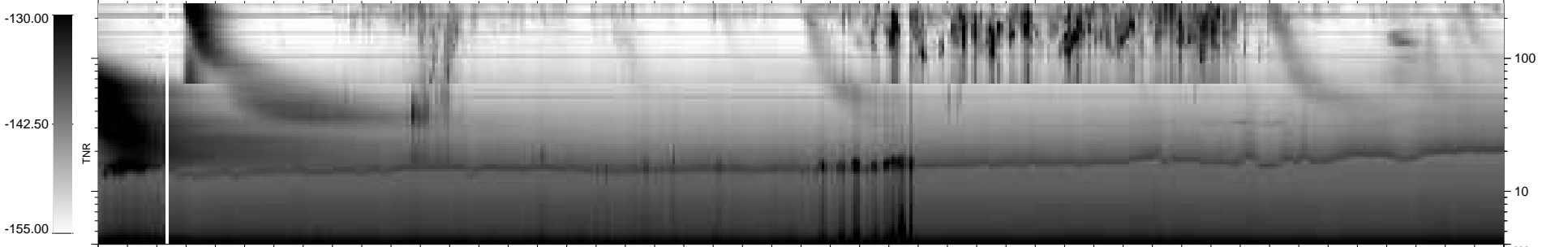
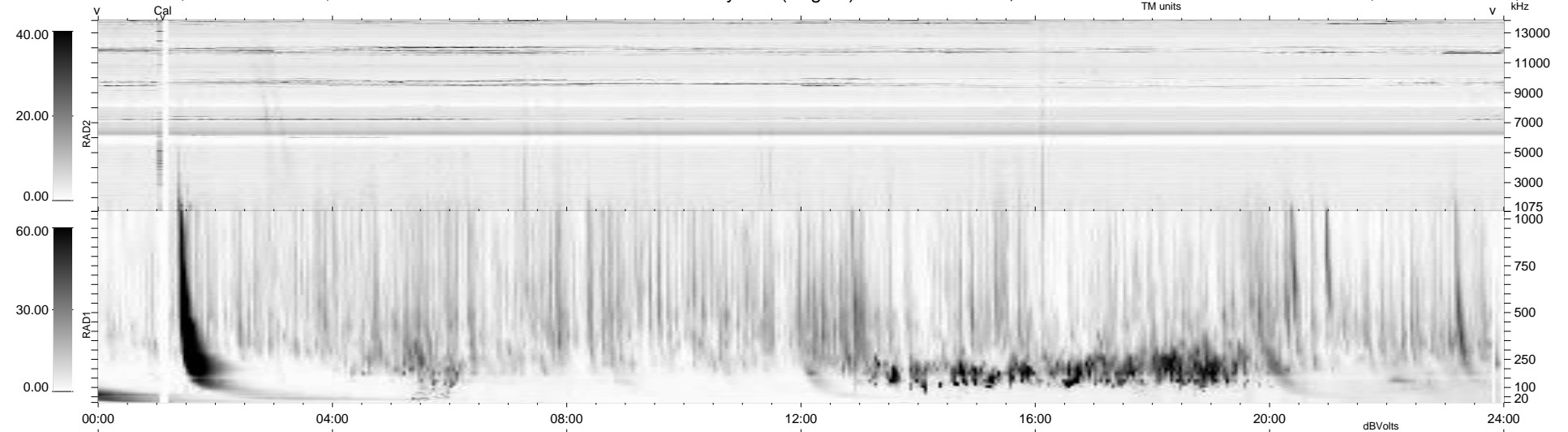


8 bad + 931 good MF/939MF projected (99%) - 0 missing MFs
 Avg interval = 180 secs
 Re = 213.37 (204.63, -58.49, -15.25 GSE)

windlib 2.0b LZ version = v02
 DAILY 2010-08-09 13:59:08
 Re = 212.37 (204.40, -55.42, -15.80 GSE)

WIND/WAVES Summary Plot (Page 1) for 06-AUG-2010, DOY = 218



```

RAD2
Antenna Ey .....
Mode LIN(1) .....
SUM/SEP SEP .....
Toggle OFF .....

RAD1
Antenna Ex .....
Mode LIS(2,4) .....
SUM/SEP SUM .....
Toggle OFF .....

TNR
Antenna ExEy .....
Mode A-32 .....
Sweep ACE .....
  
```