

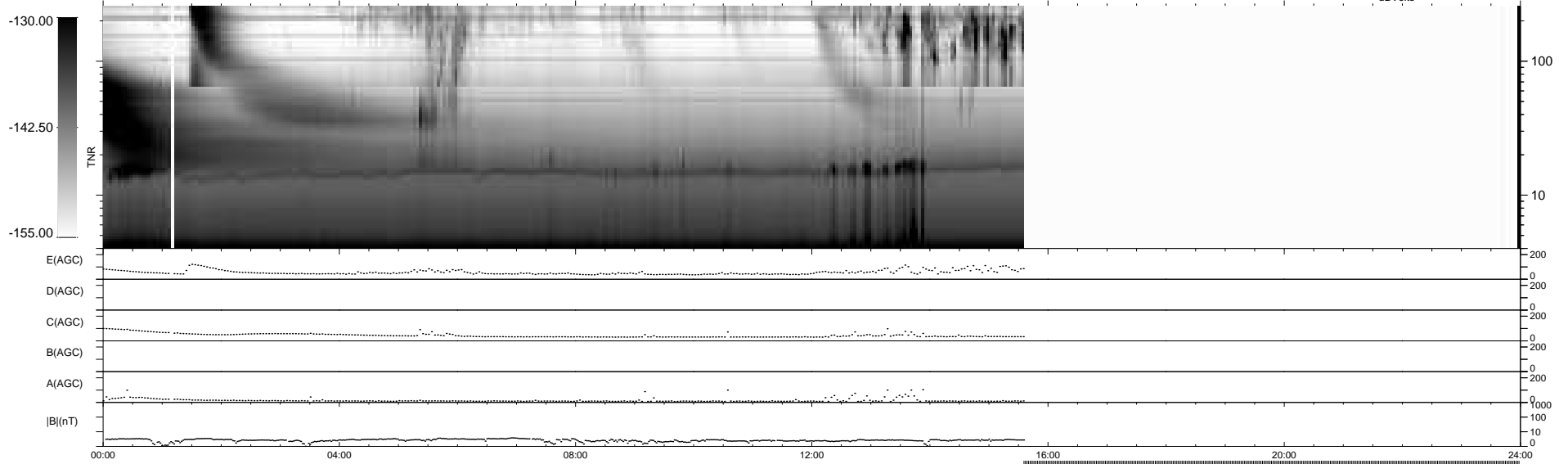
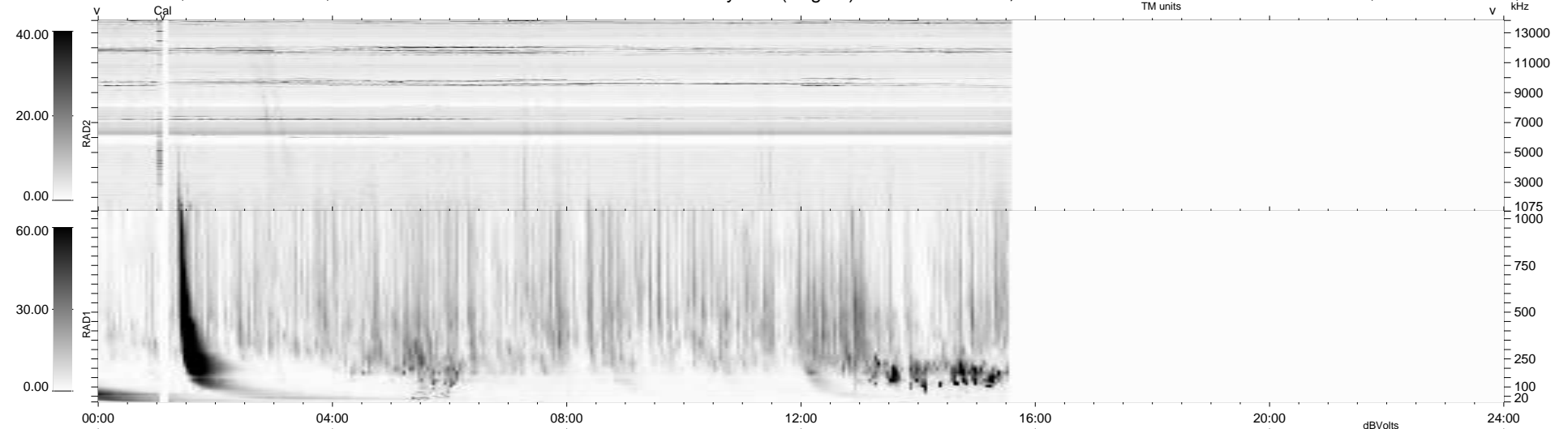
6 bad + 604 good MF/939MF projected (64%) - 329 missing MFs
 Avg interval = 180 secs
 Re = - 213.37 (204.63, -58.49, -15.25 GSE)

windlib 2.0b

LZ version = v01

WIND/WAVES Summary Plot (Page 1) for 06-AUG-2010, DOY = 218

DAILY 2010-08-09 11:59:07
 Re = 212.37 (204.40, -55.42, -15.80 GSE)



RAD2
 Antenna Ey
 Mode LIN(1)
 SUM/SEP SEP
 Toggle OFF
 RAD1
 Antenna Ex
 Mode LIS(2,4)
 SUM/SEP SUM
 Toggle OFF
 TNR
 Antenna ExEy
 Mode A-32
 Sweep ACE