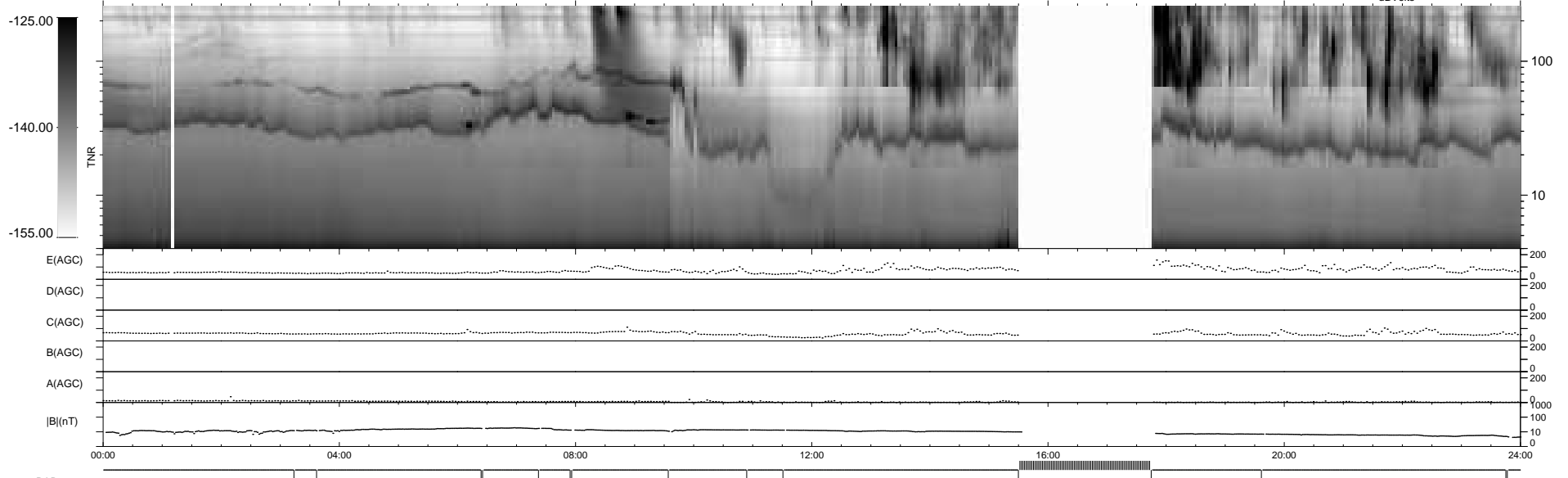
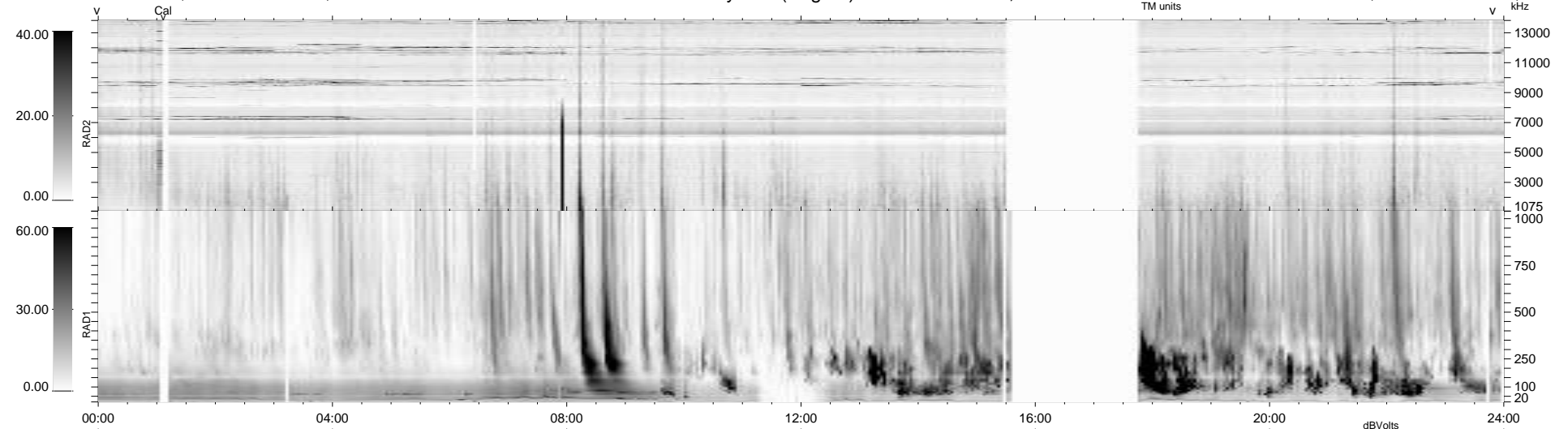


15 bad + 837 good MF/939MF projected (89%) - 87 missing MFs  
 Avg interval = 180 secs  
 Re = 215.45 (205.14, -64.32, -14.07 GSE)

windlib 2.0b LZ version = v01  
 DAILY 2010-08-06 15:59:42  
 Re = 214.41 (204.88, -61.48, -14.67 GSE)

### WIND/WAVES Summary Plot (Page 1) for 04-AUG-2010, DOY = 216



```

RAD2
Antenna Ey .....
Mode LIN(1) .....
SUM/SEP SEP .....
Toggle OFF .....

RAD1
Antenna Ex .....
Mode LIS(2,4) .....
SUM/SEP SUM .....
Toggle OFF .....

TNR
Antenna ExEy .....
Mode A-32 .....
Sweep ACE .....
  
```