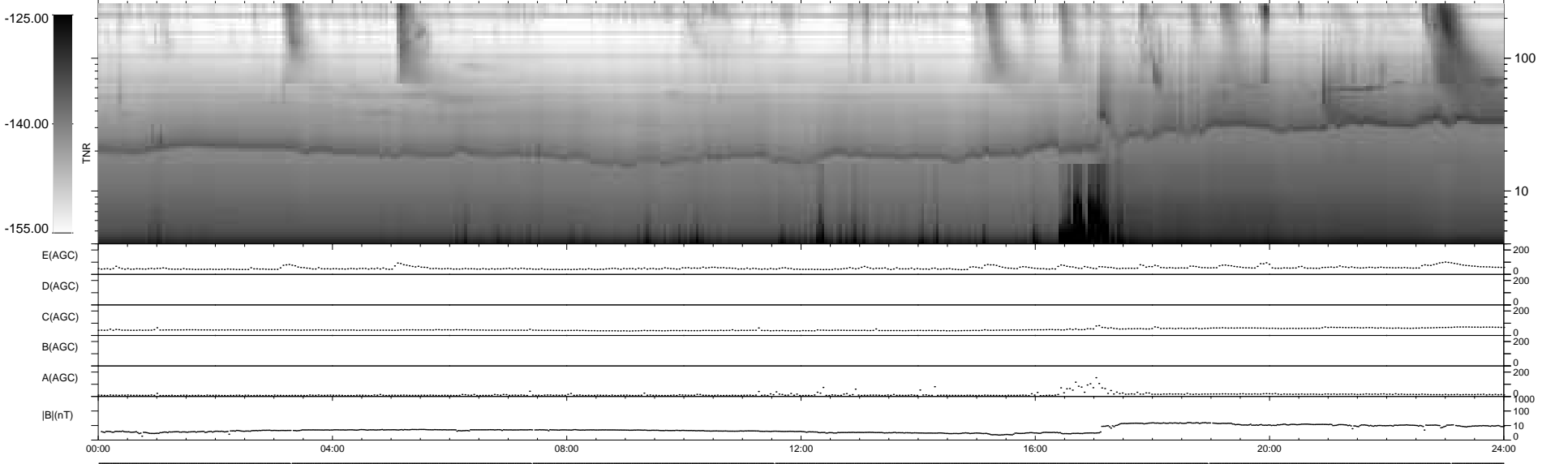
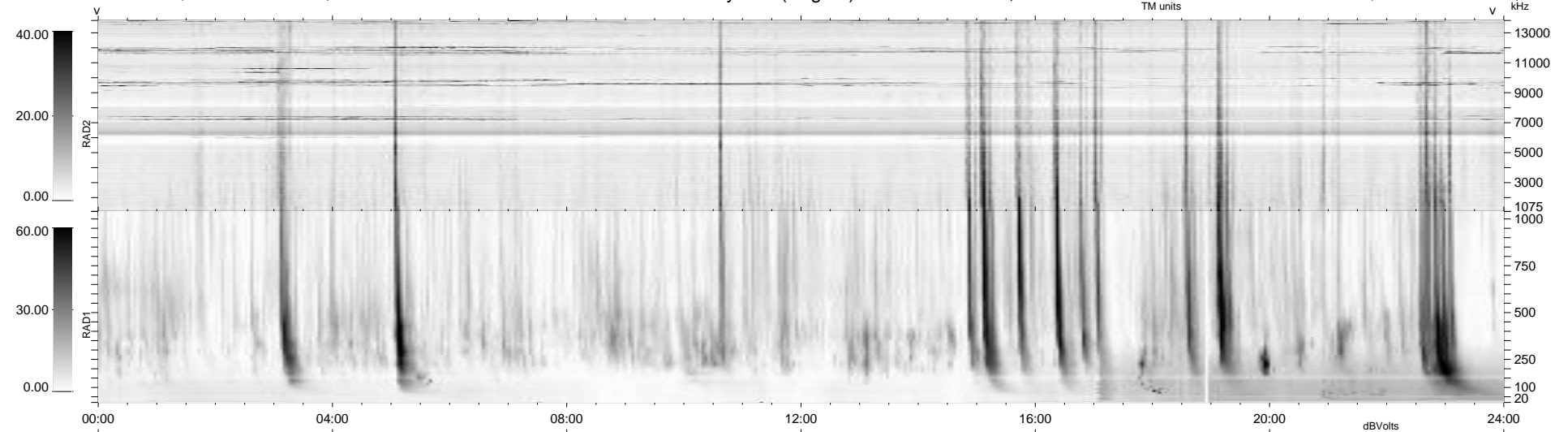


5 bad + 934 good MF/939MF projected (99%) - 0 missing MFs  
 Avg interval = 180 secs  
 Re = - 216.51 (205.42, -67.06, -13.46 GSE)

windlib 2.0b LZ version = v01  
 DAILY 2010-08-04 14:59:07  
 Re = 215.45 (205.14, -64.34, -14.07 GSE)

### WIND/WAVES Summary Plot (Page 1) for 03-AUG-2010, DOY = 215



RAD2  
 Antenna Ey .....  
 Mode LIN(1) .....  
 SUM/SEP SEP .....  
 Toggle OFF .....  
 RAD1  
 Antenna Ex .....  
 Mode LIS(2,4) .....  
 SUM/SEP SUM .....  
 Toggle OFF .....  
 TNR  
 Antenna ExEy .....  
 Mode A-32 .....  
 Sweep ACE .....