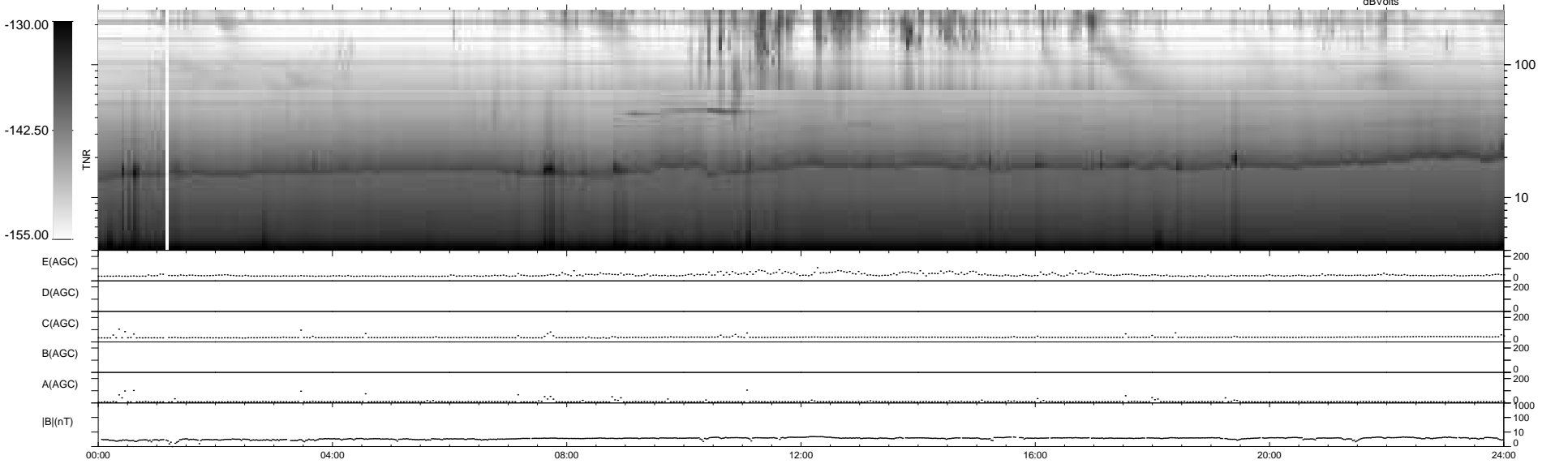
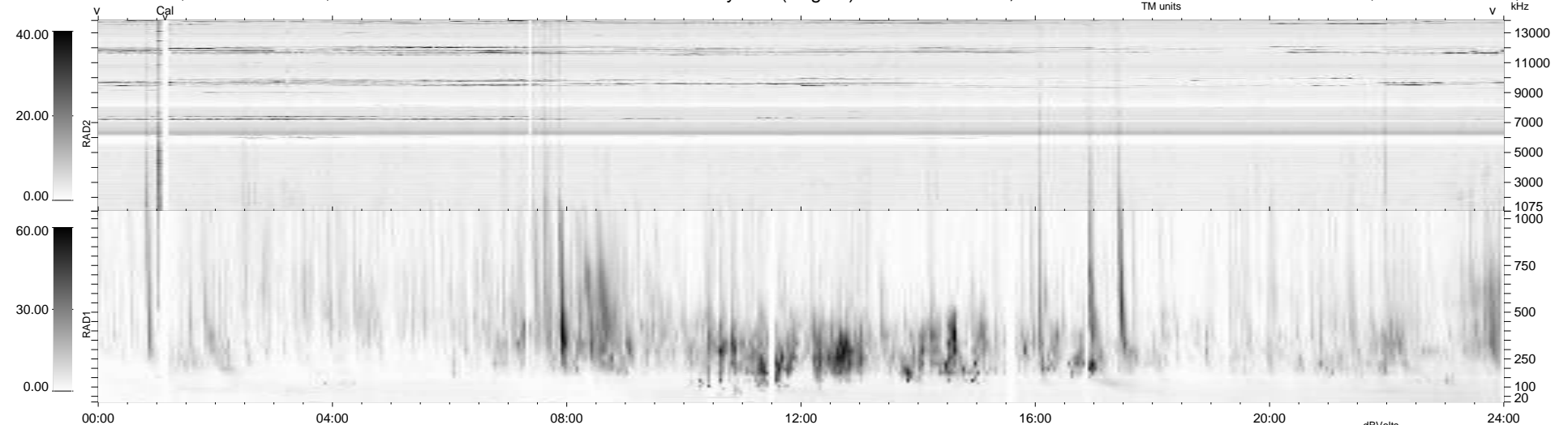


18 bad + 921 good MF/939MF projected (98%) - 0 missing MFs
 Avg interval = 180 secs
 Re = 217.59 (205.73, -69.68, -12.82 GSE)

windlib 2.0b LZ version = v01
 DAILY 2010-08-03 15:00:13
 Re = 216.52 (205.42, -67.08, -13.45 GSE)

WIND/WAVES Summary Plot (Page 1) for 02-AUG-2010, DOY = 214



RAD2
 Antenna Ey
 Mode LIN(1)
 SUM/SEP SEP
 Toggle OFF

RAD1
 Antenna Ex
 Mode LIS(2/4)
 SUM/SEP SUM
 Toggle OFF

TNR
 Antenna ExEy
 Mode A-32
 Sweep ACE