

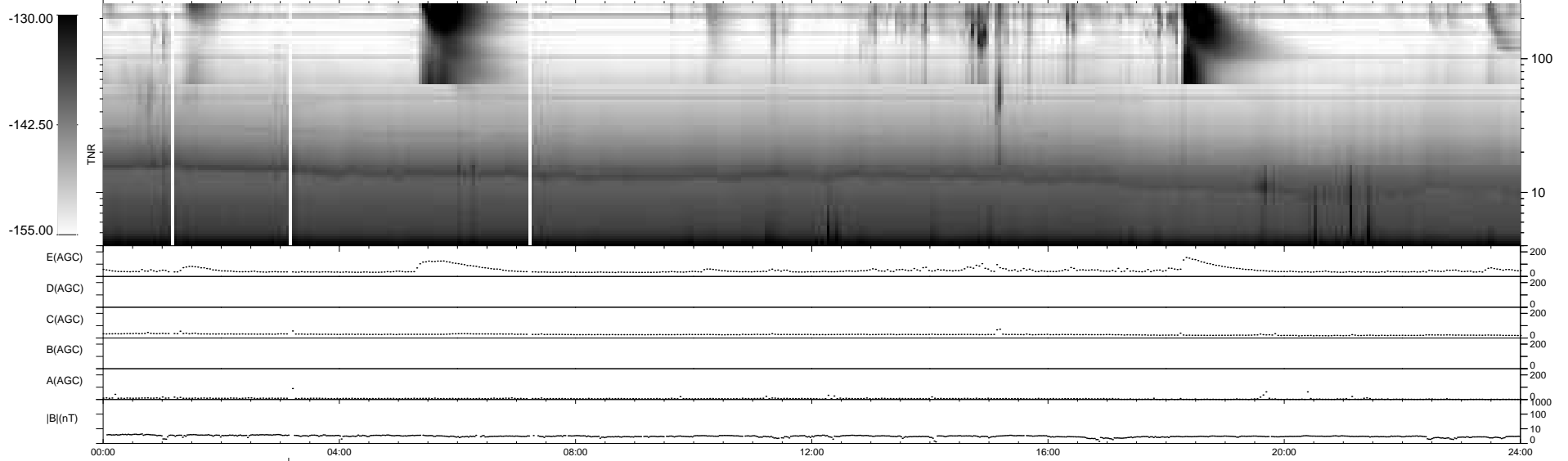
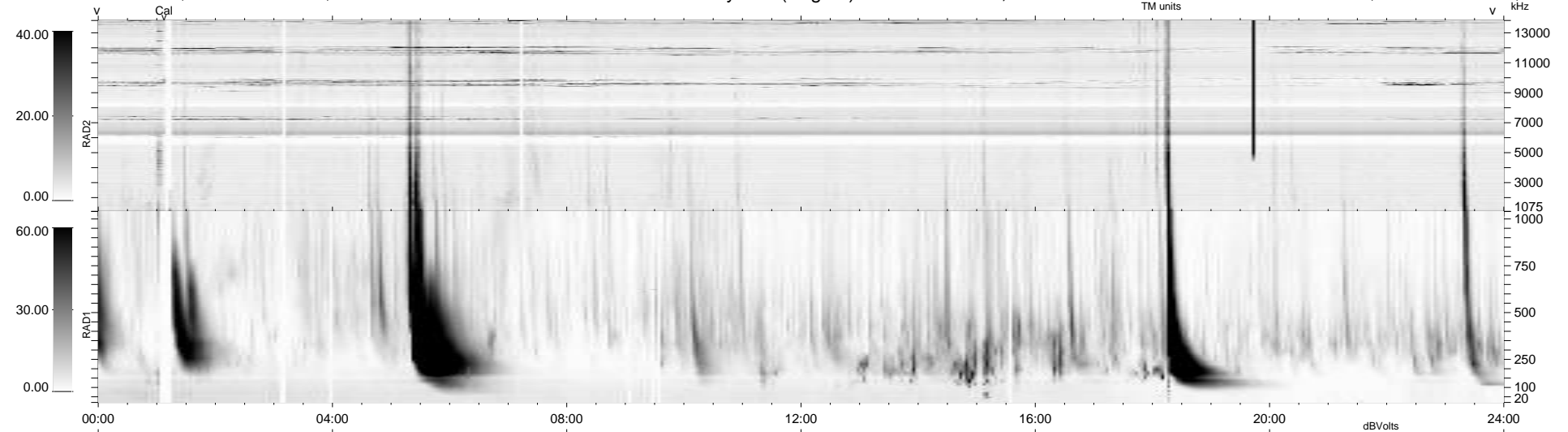
17 bad + 921 good MF/939MF projected (98%) - 1 missing MF  
 Avg interval = 180 secs  
 Re = 219.82 (206.48, -74.54, -11.51 GSE)

windlib 2.0b

LZ version = v02

### WIND/WAVES Summary Plot (Page 1) for 31-JUL-2010, DOY = 212

DAILY 2010-08-02 21:59:07  
 Re = 218.70 (206.09, -72.19, -12.17 GSE)



RAD2  
 Antenna Ey  
 Mode LIN(1)  
 SUM/SEP SEP  
 Toggle OFF

RAD1  
 Antenna Ex  
 Mode LIS(2,4)  
 SUM/SEP SUM  
 Toggle OFF

TNR  
 Antenna ExEy  
 Mode A-32  
 Sweep ACE