

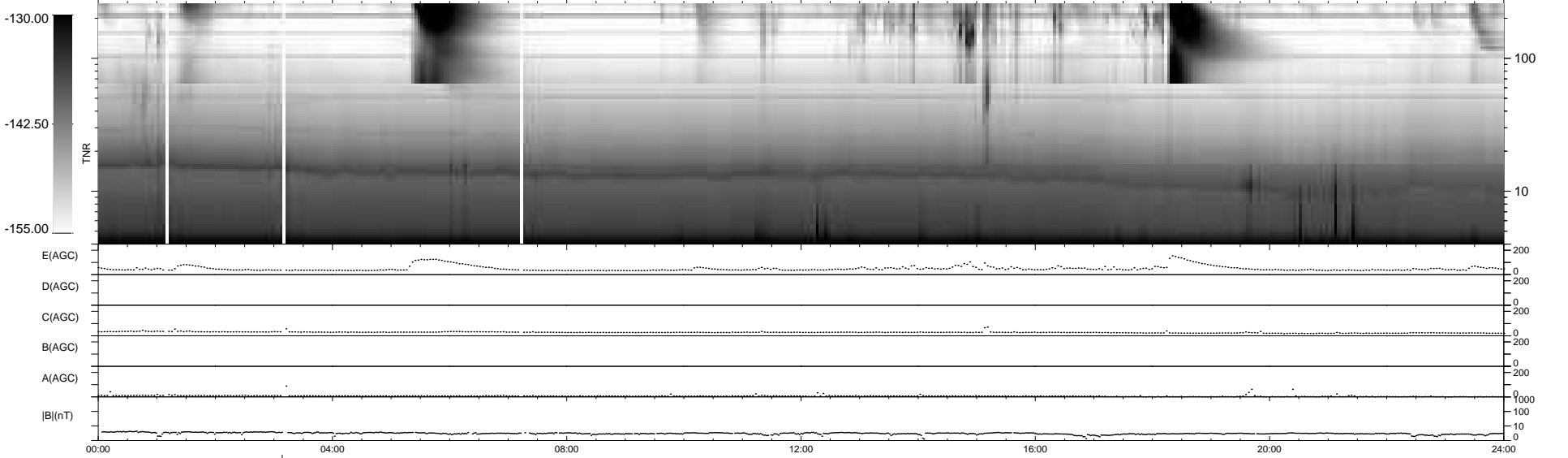
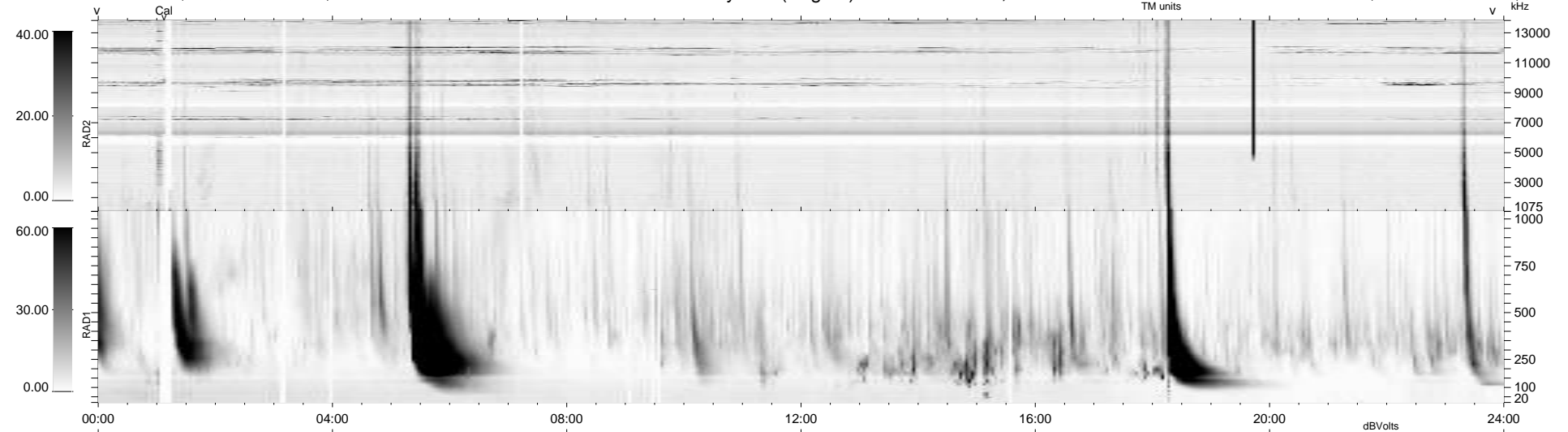
17 bad + 921 good MF/939MF projected (98%) - 1 missing MF  
 Avg interval = 180 secs  
 Re = 219.82 (206.48, -74.54, -11.51 GSE)

windlib 2.0b

LZ version = v01

### WIND/WAVES Summary Plot (Page 1) for 31-JUL-2010, DOY = 212

DAILY 2010-08-02 13:01:29  
 Re = 218.70 (206.09, -72.19, -12.17 GSE)



```

RAD2
Antenna Ey .....
Mode LIN(1) .....
SUM/SEP SEP .....
Toggle OFF .....

RAD1
Antenna Ex .....
Mode LIS(2,4) .....
SUM/SEP SUM .....
Toggle OFF .....

TNR
Antenna ExEy .....
Mode A-32 .....
Sweep ACE .....
  
```