

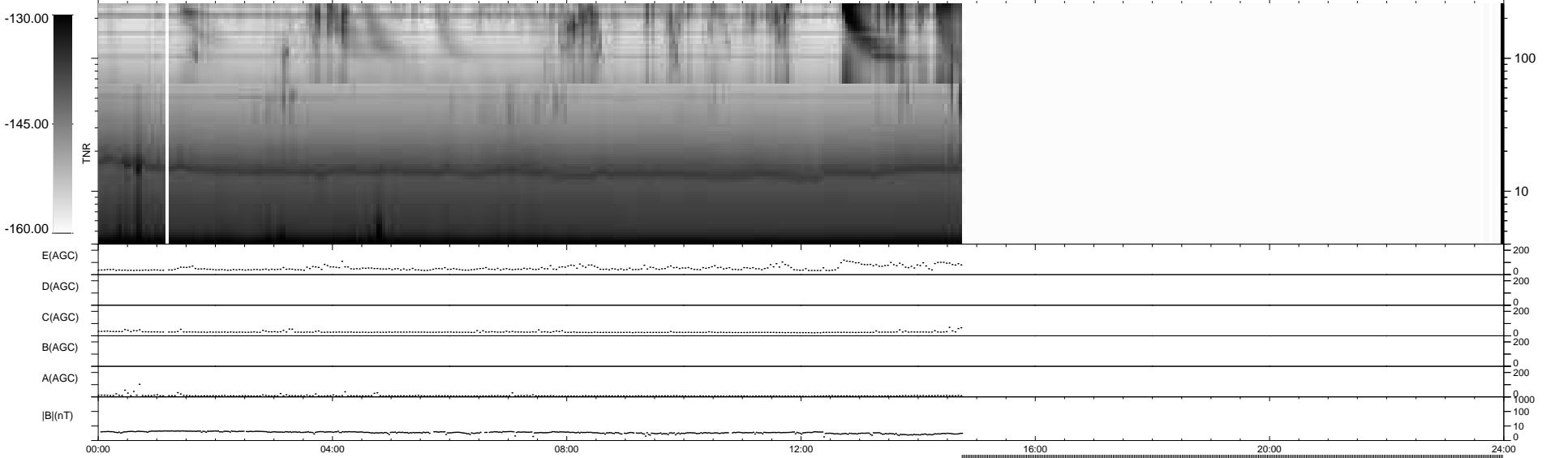
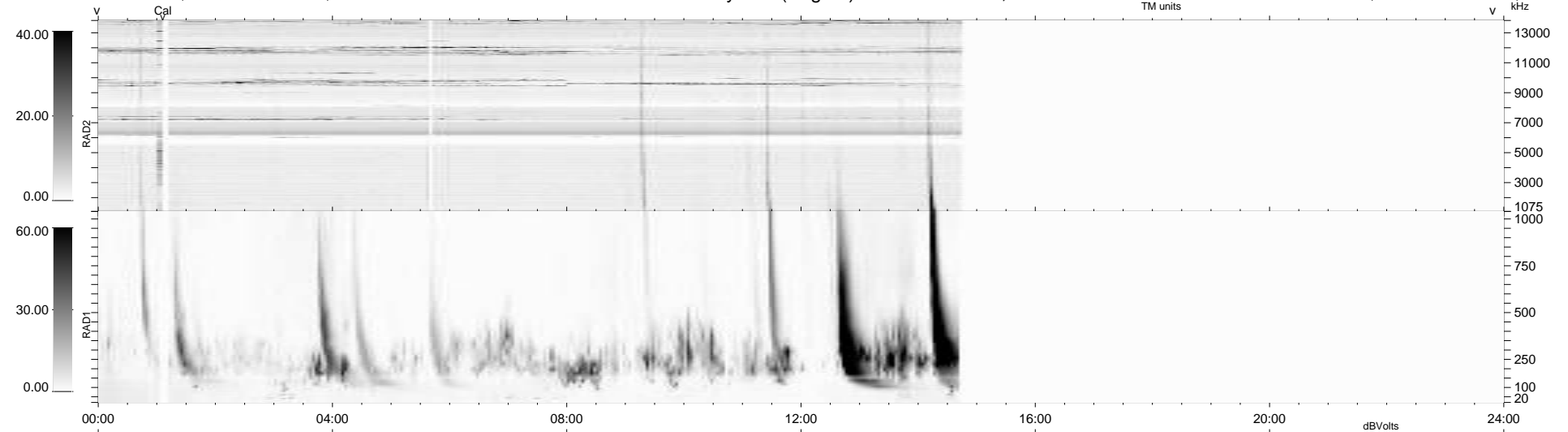
11 bad + 566 good MF/939MF projected (60%) - 362 missing MFs
 Avg interval = 180 secs
 Re = 222.15 (207.41, -78.92, -10.15 GSE)

windlib 2.0b

LZ version = v01

WIND/WAVES Summary Plot (Page 1) for 29-JUL-2010, DOY = 210

DAILY 2010-08-02 09:59:07
 Re = 220.98 (206.92, -76.81, -10.83 GSE)



```

RAD2
Antenna Ey .....
Mode LIN(1) .....
SUM/SEP SEP .....
Toggle OFF .....

RAD1
Antenna Ex .....
Mode LIS(2,4) .....
SUM/SEP SUM .....
Toggle OFF .....

TNR
Antenna ExEy .....
Mode A-32 .....
Sweep ACE .....
  
```