

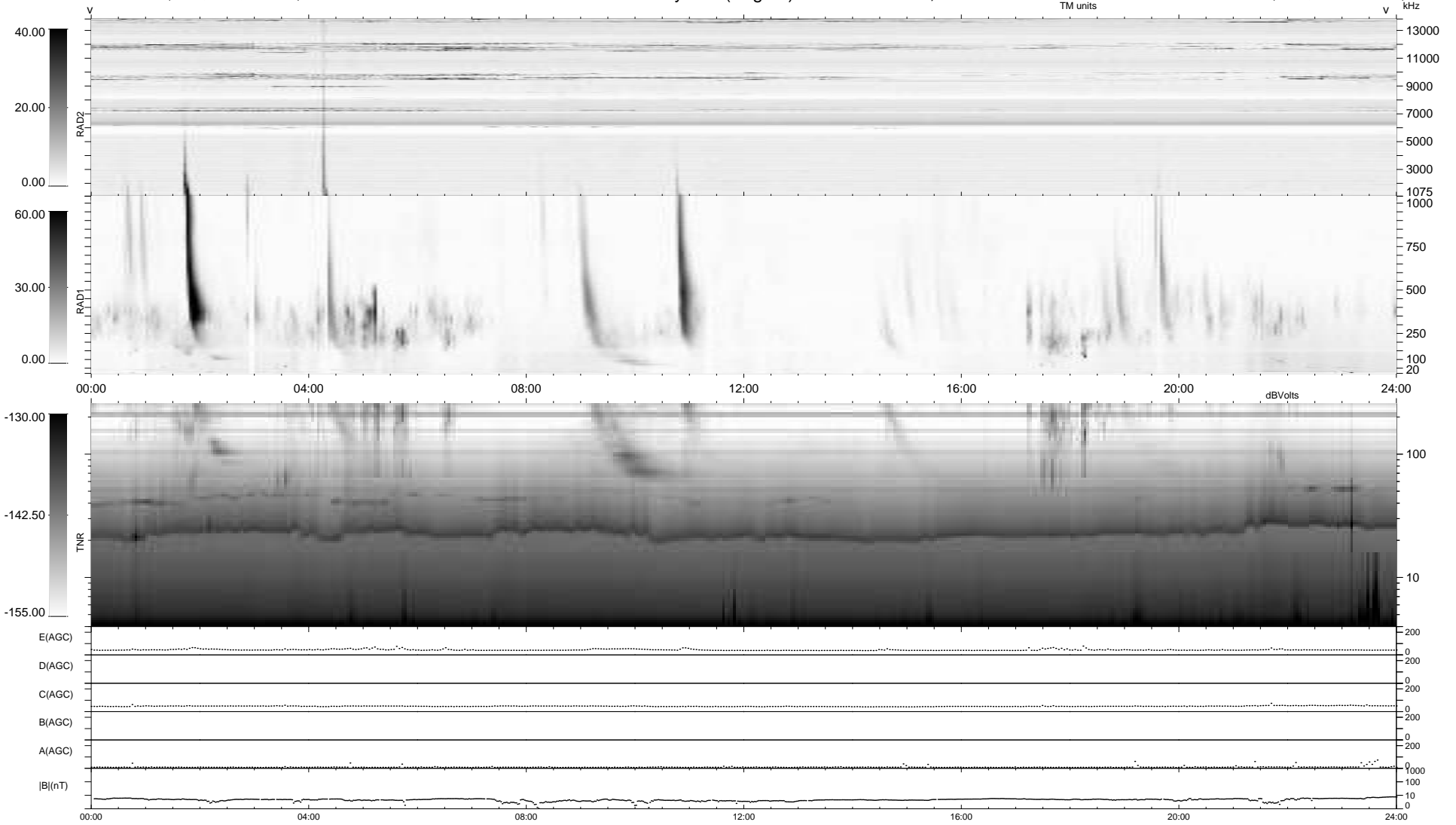
13 bad + 926 good MF/939MF projected (98%) - 0 missing MFs  
 Avg interval = 180 secs  
 Re = 225.83 (209.23, -84.60, -8.03 GSE)

windlib 2.0b

LZ version = v01

### WIND/WAVES Summary Plot (Page 1) for 26-JUL-2010, DOY = 207

DAILY 2010-07-27 23:59:07  
 Re = 224.59 (208.57, -82.83, -8.74 GSE)



RAD2 Antenna Ey  
 Mode LIN(1)  
 SUM/SEP SEP  
 Toggle OFF

RAD1 Antenna Ex  
 Mode LIS(2,4)  
 SUM/SEP SUM  
 Toggle OFF

TNR Antenna ExEy  
 Mode A-32  
 Sweep ACE