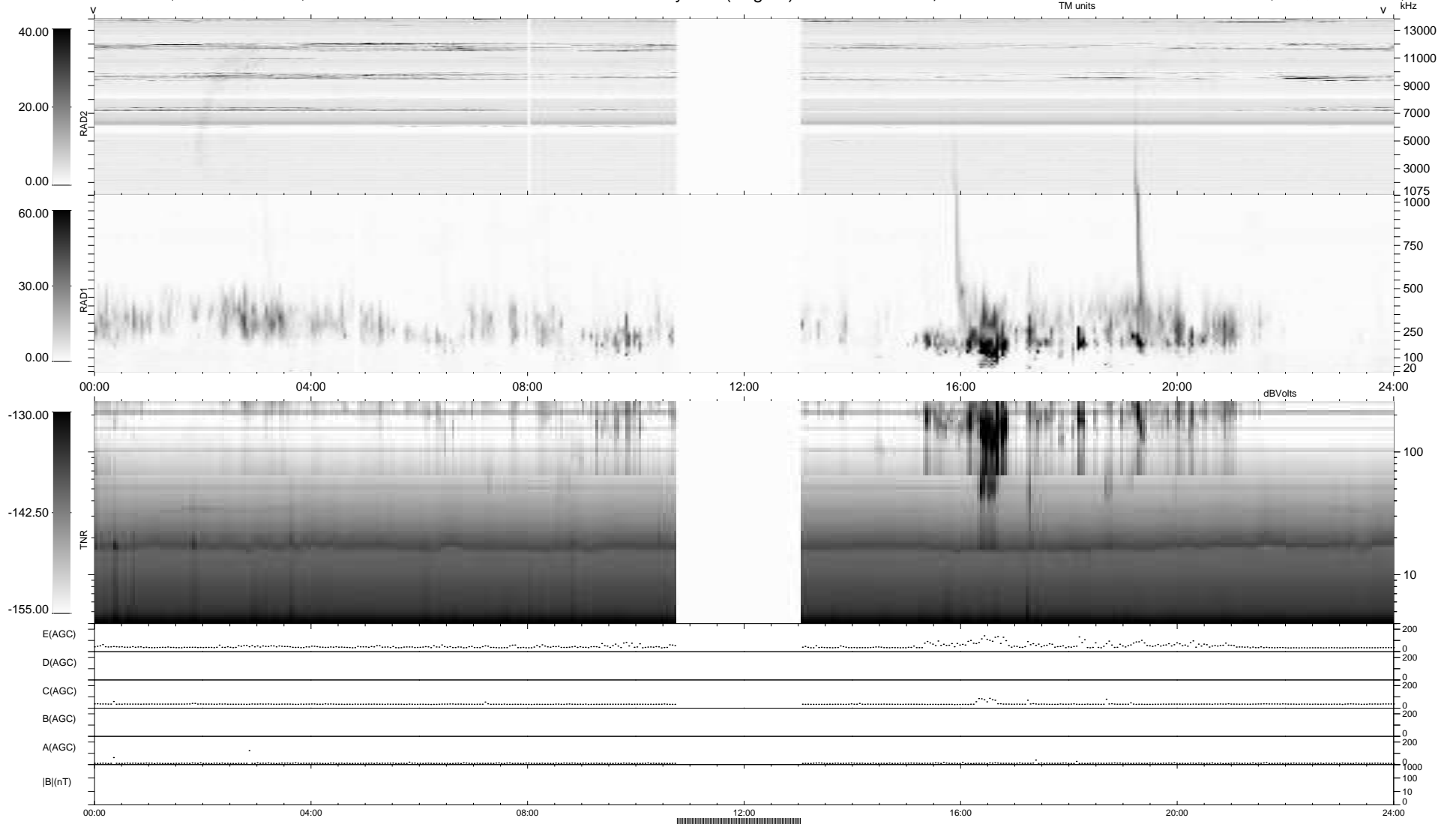


13 bad + 836 good MF/939MF projected (89%) - 90 missing MFs
 Avg interval = 180 secs
 Re = 255.53 (237.75, -92.72, 13.13 GSE)

1.7d VMS-SunOS LZ version = v01
 DAILY Tue Jun 29, 2010
 Re = 254.96 (236.64, -94.09, 12.47 GSE)

WIND/WAVES Summary Plot (Page 1) for 28-JUN-2010, DOY = 179



RAD2
 Antenna Ey
 Mode LIN(1)
 SUM/SEP SEP
 Toggle OFF
 RAD1
 Antenna Ex
 Mode LIS(2,4)
 SUM/SEP SUM
 Toggle OFF
 TNR
 Antenna ExEy
 Mode A-32
 Sweep ACE