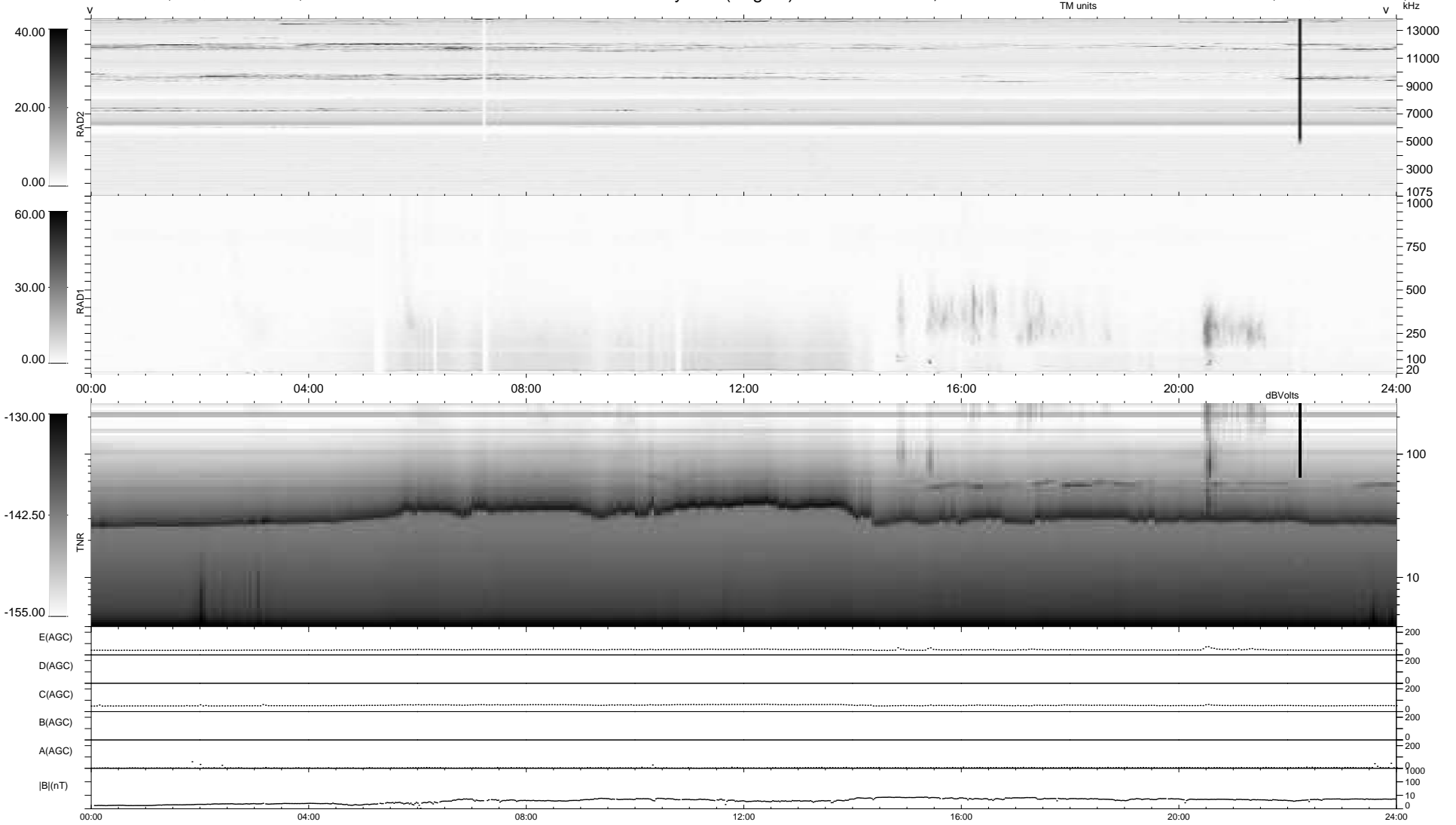


16 bad + 923 good MF/939MF projected (98%) - 0 missing MFs  
 Avg interval = 180 secs  
 Re = 257.77 (242.44, -86.16, 15.64 GSE)

1.7d VMS-SunOS LZ version = v01  
 DAILY Fri Jun 25, 2010  
 Re = 257.21 (241.25, -87.93, 15.03 GSE)

WIND/WAVES Summary Plot (Page 1) for 24-JUN-2010, DOY = 175



RAD2  
 Antenna Ey  
 Mode LIN(1)  
 SUM/SEP SEP  
 Toggle OFF

RAD1  
 Antenna Ex  
 Mode LIS(2,4)  
 SUM/SEP SUM  
 Toggle OFF

TNR  
 Antenna ExEy  
 Mode A-32  
 Sweep ACE