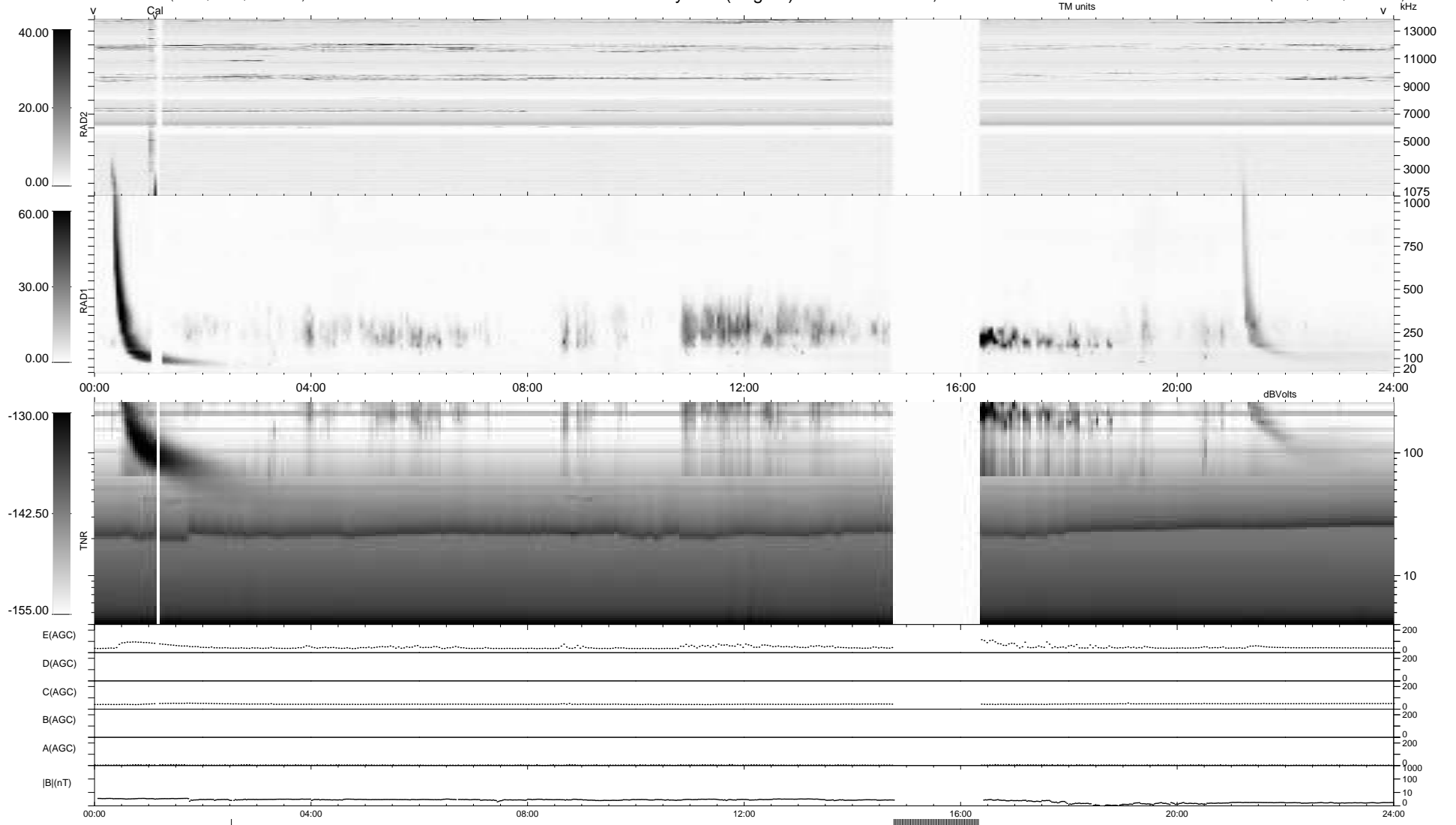


6 bad + 870 good MF/939MF projected (92%) - 63 missing MFs
 Avg interval = 180 secs
 Re = 258.34 (243.66, -84.29, 16.23 GSE)

1.7d VMS-SunOS LZ version = v01
 DAILY Fri Jun 25, 2010
 Re = 257.78 (242.45, -86.15, 15.64 GSE)

WIND/WAVES Summary Plot (Page 1) for 23-JUN-2010, DOY = 174



RAD2
 Antenna Ey
 Mode LIN(1)
 SUM/SEP SEP
 Toggle OFF
 RAD1
 Antenna Ex
 Mode LIS(2,4)
 SUM/SEP SUM
 Toggle OFF
 TNR
 Antenna ExEy
 Mode A-32
 Sweep ACE