

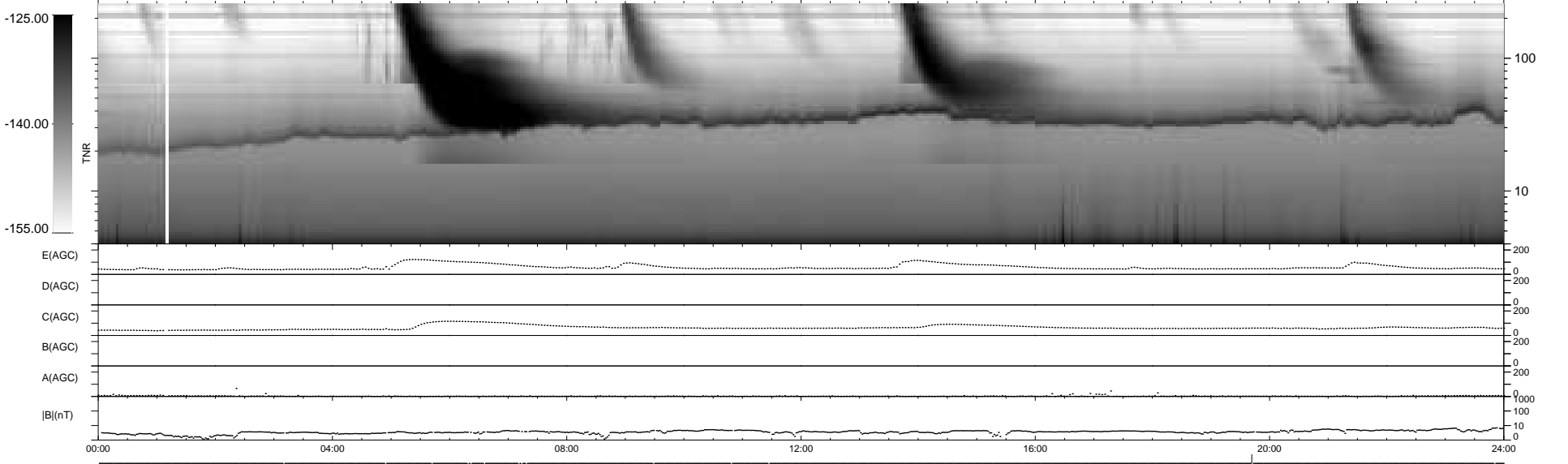
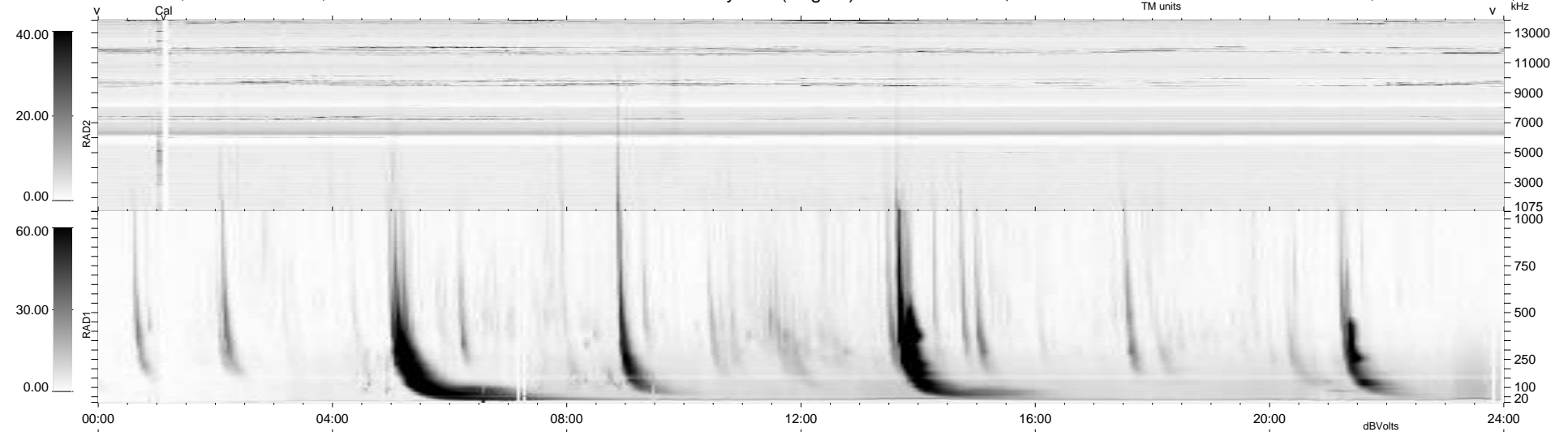
13 bad + 925 good MF/939MF projected (98%) - 1 missing MF
 Avg interval = 180 secs
 Re = 264.18 (258.01, -51.92, 22.96 GSE)

1.7d VMS-SunOS

LZ version = v01

WIND/WAVES Summary Plot (Page 1) for 09-JUN-2010, DOY = 160

DAILY Tue Jun 22, 2010
 Re = 264.07 (257.36, -54.63, 22.60 GSE)



RAD2
 Antenna Ey
 Mode LIN(1)
 SUM/SEP SEP
 Toggle OFF
 RAD1
 Antenna Ex
 Mode LIS(2,4)
 SUM/SEP SUM
 Toggle OFF
 TNR
 Antenna ExEy
 Mode A-32
 Sweep ACE