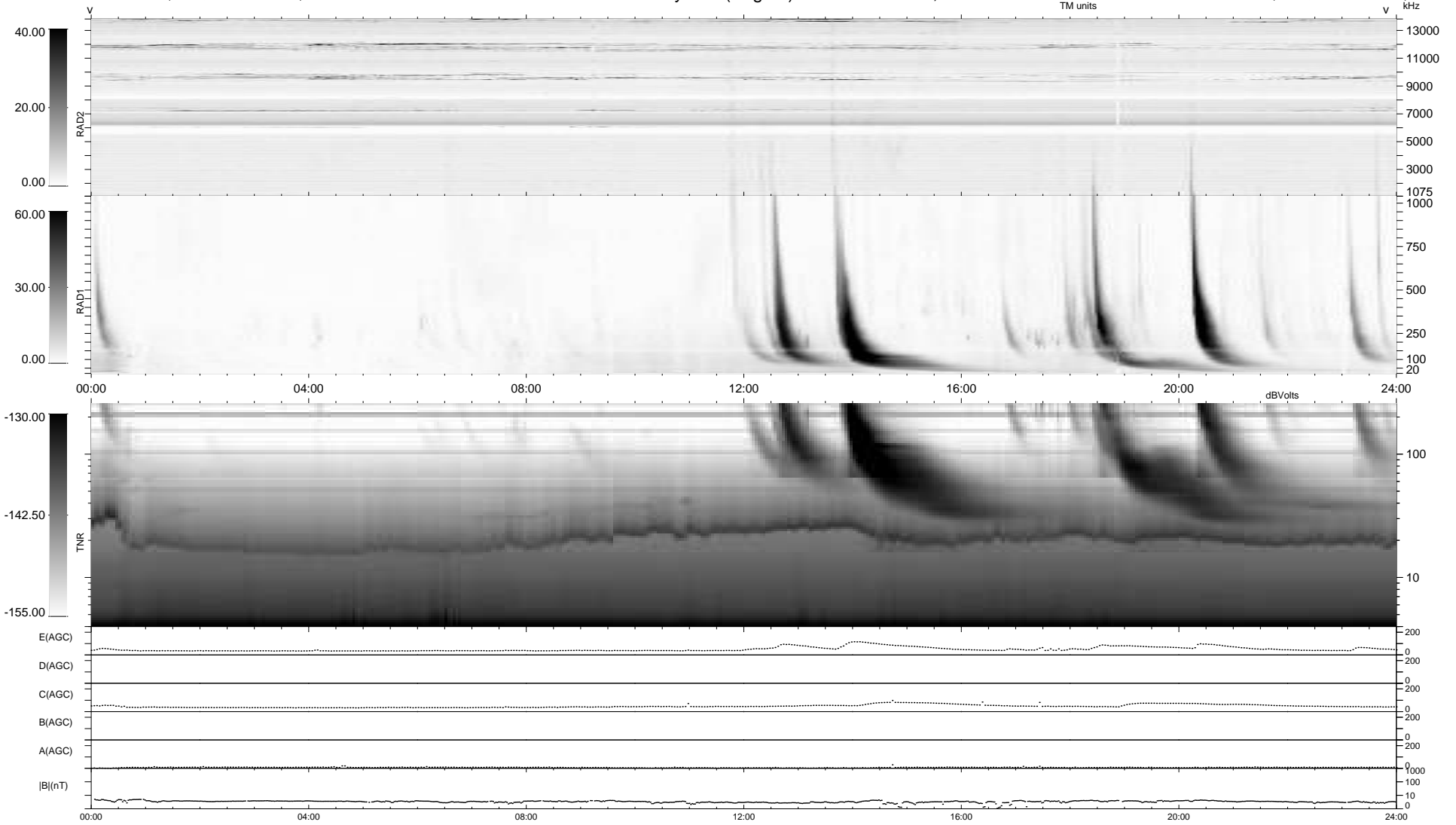


12 bad + 927 good MF/939MF projected (98%) - 0 missing MFs
 Avg interval = 180 secs
 Re = 264.25 (258.60, -49.10, 23.28 GSE)

1.7d VMS-SunOS LZ version = v01
 DAILY Thu Jun 10, 2010
 Re = 264.18 (258.01, -51.90, 22.96 GSE)

WIND/WAVES Summary Plot (Page 1) for 08-JUN-2010, DOY = 159



```

RAD2
Antenna Ey .....
Mode LIN(1) .....
SUM/SEP SEP .....
Toggle OFF .....

RAD1
Antenna Ex .....
Mode LIS(2,4) .....
SUM/SEP SUM .....
Toggle OFF .....

TNR
Antenna ExEy .....
Mode A-32 .....
Sweep ACE .....
  
```