

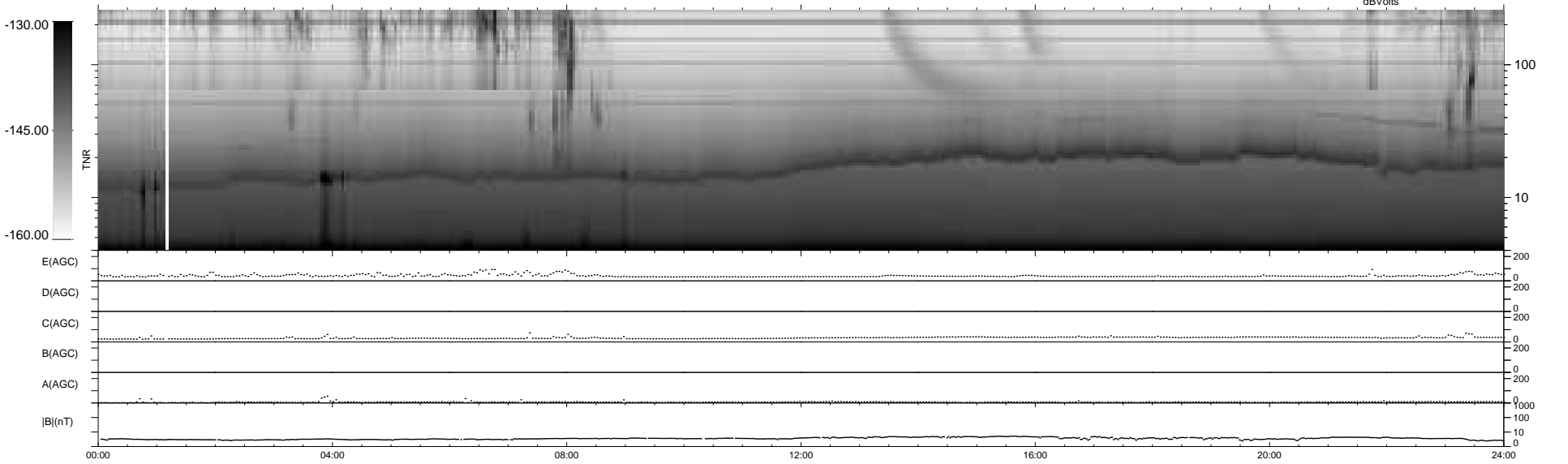
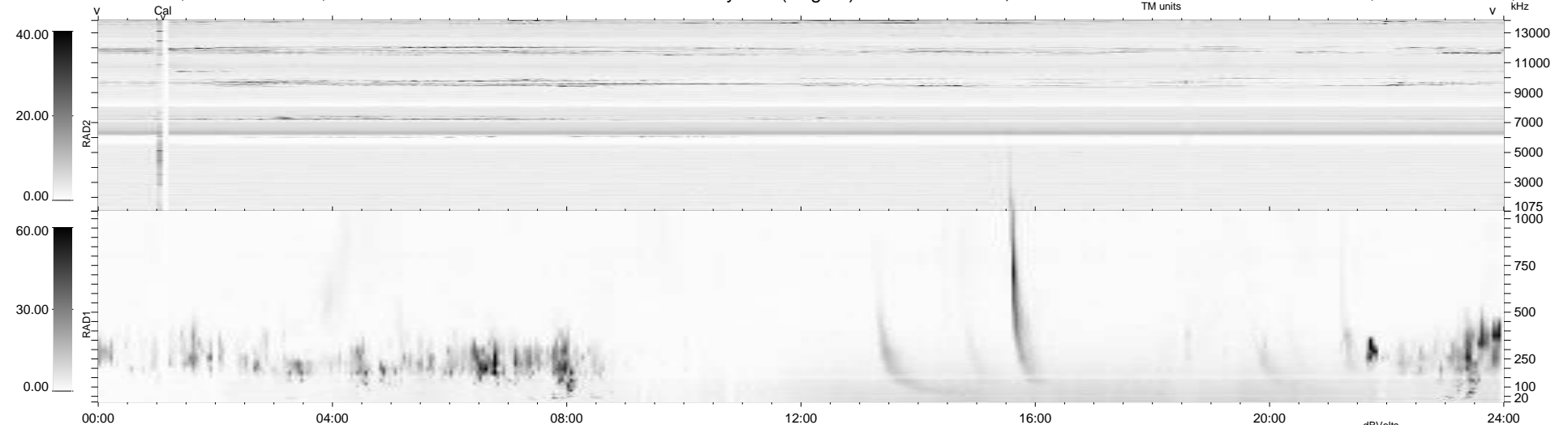
13 bad + 926 good MF/939MF projected (98%) - 0 missing MFs  
 Avg interval = 180 secs  
 Re = 264.23 (260.04, -40.19, 24.12 GSE)

1.7d VMS-SunOS

LZ version = v03

WIND/WAVES Summary Plot (Page 1) for 05-JUN-2010, DOY = 156

DAILY Mon Jun 7, 2010  
 Re = 264.26 (259.61, -43.22, 23.87 GSE)



RAD2  
 Antenna Ey .....  
 Mode LIN(1) .....  
 SUM/SEP SEP .....  
 Toggle OFF .....  
 RAD1  
 Antenna Ex .....  
 Mode LIS(2,4) .....  
 SUM/SEP SUM .....  
 Toggle OFF .....  
 TNR  
 Antenna ExEy .....  
 Mode A-32 .....  
 Sweep ACE .....