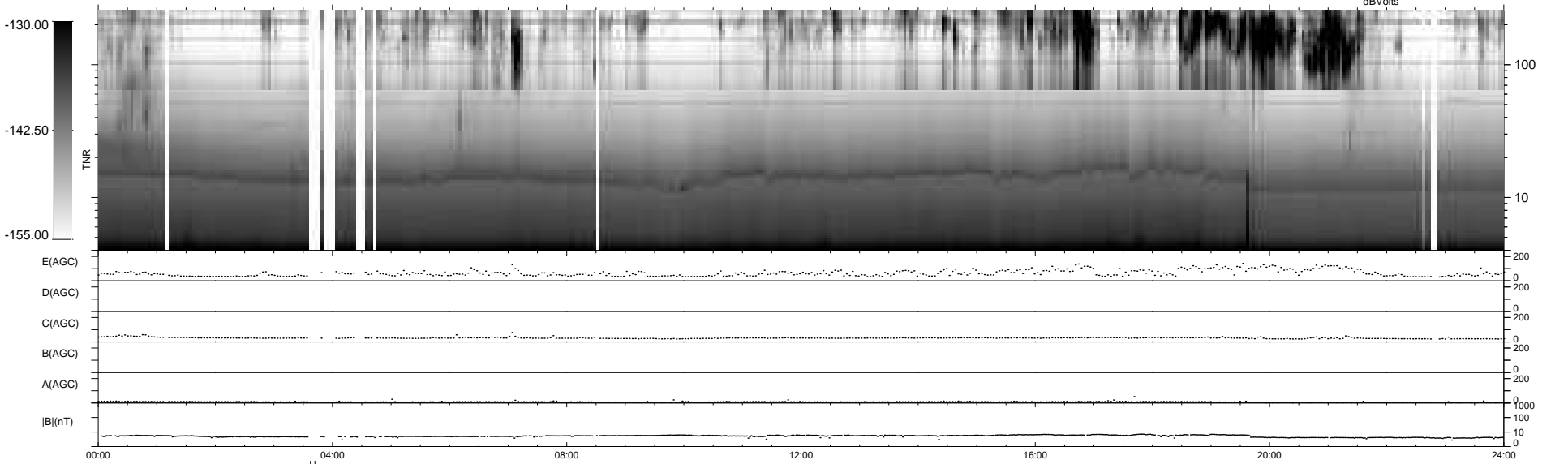
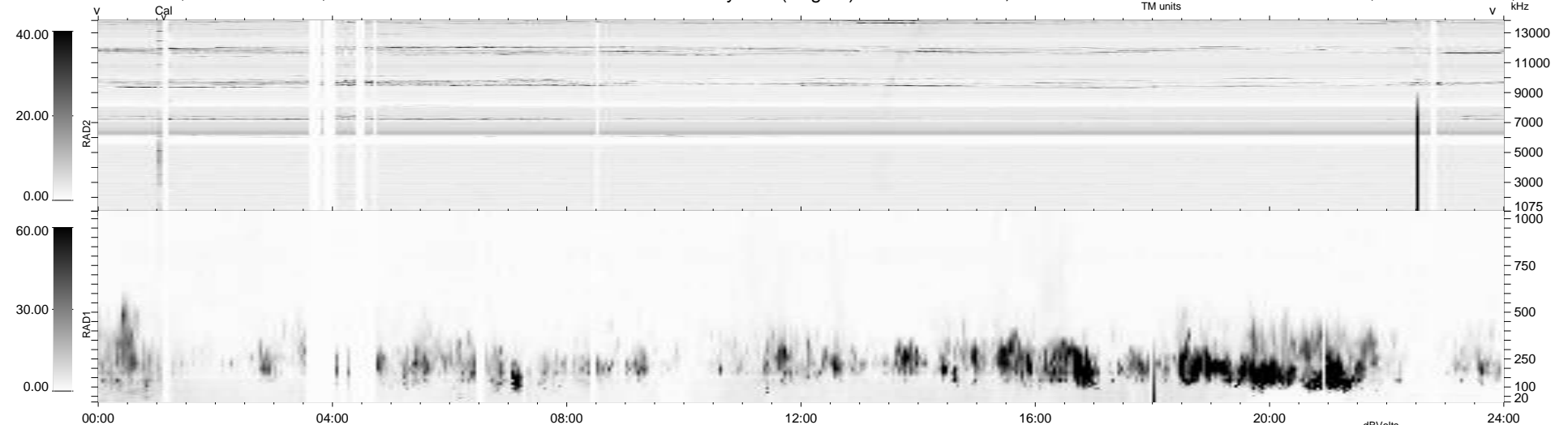


65 bad + 872 good MF/939MF projected (92%) - 2 missing MFs
 Avg interval = 180 secs
 Re = 263.93 (261.34, -27.28, 24.89 GSE)

1.7d VMS-SunOS LZ version = v01
 DAILY Wed Jun 2, 2010
 Re = 264.01 (261.07, -30.58, 24.74 GSE)

WIND/WAVES Summary Plot (Page 1) for 01-JUN-2010, DOY = 152



RAD2
 Antenna Ey
 Mode LIN(1)
 SUM/SEP SEP
 Toggle OFF

RAD1
 Antenna Ex
 Mode LIS(2,4)
 SUM/SEP SUM
 Toggle OFF

TNR
 Antenna ExEy
 Mode A-32
 Sweep ACE