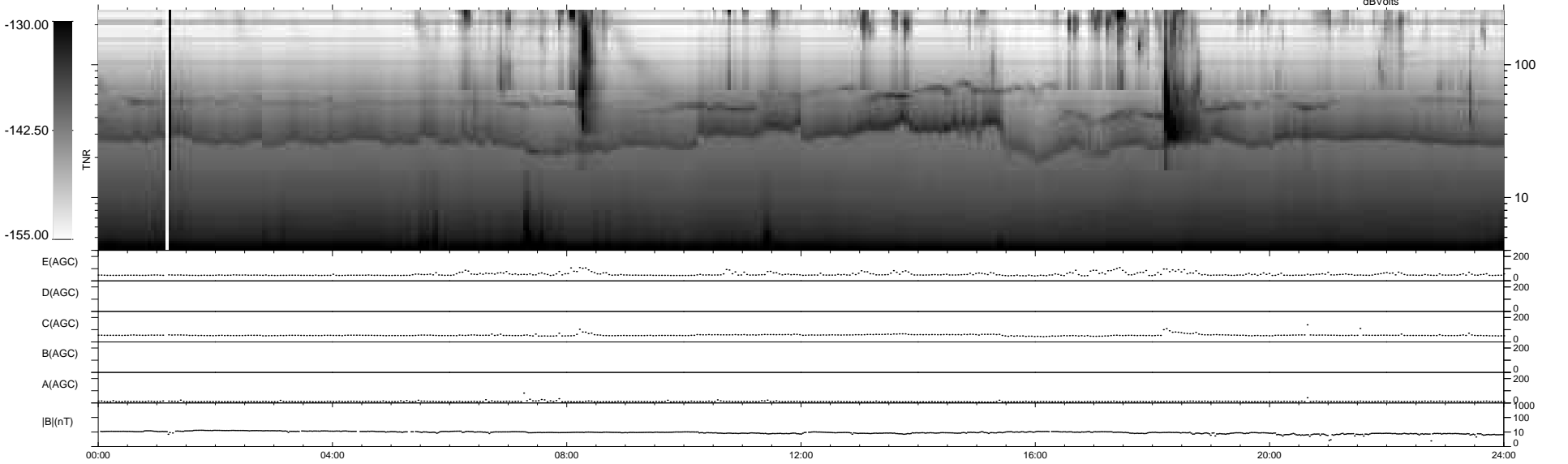
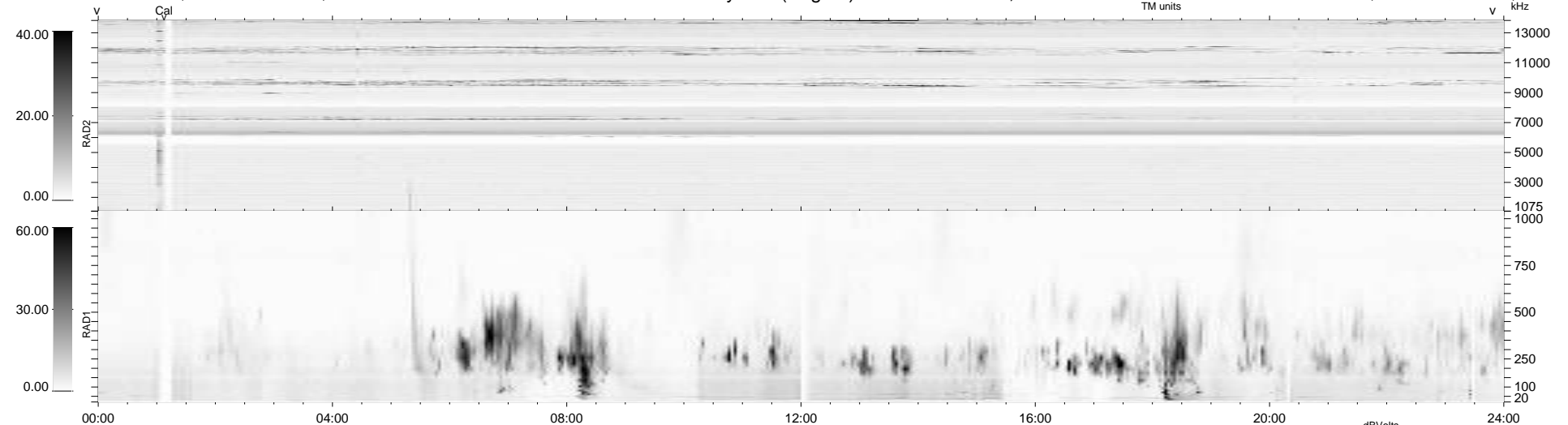


17 bad + 923 good MF/940MF projected (98%) - 0 missing MFs
 Avg interval = 180 secs
 Re = 263.81 (261.81, -20.48, 25.13 GSE)

1.7d VMS-SunOS LZ version = v01
 DAILY Wed Jun 2, 2010
 Re = 263.86 (261.59, -23.88, 25.02 GSE)

WIND/WAVES Summary Plot (Page 1) for 30-MAY-2010, DOY = 150



```

RAD2
Antenna Ey .....
Mode LIN(1) .....
SUM/SEP SEP .....
Toggle OFF .....

RAD1
Antenna Ex .....
Mode LIS(2,4) .....
SUM/SEP SUM .....
Toggle OFF .....

TNR
Antenna ExEy .....
Mode A-32 .....
Sweep ACE .....
  
```