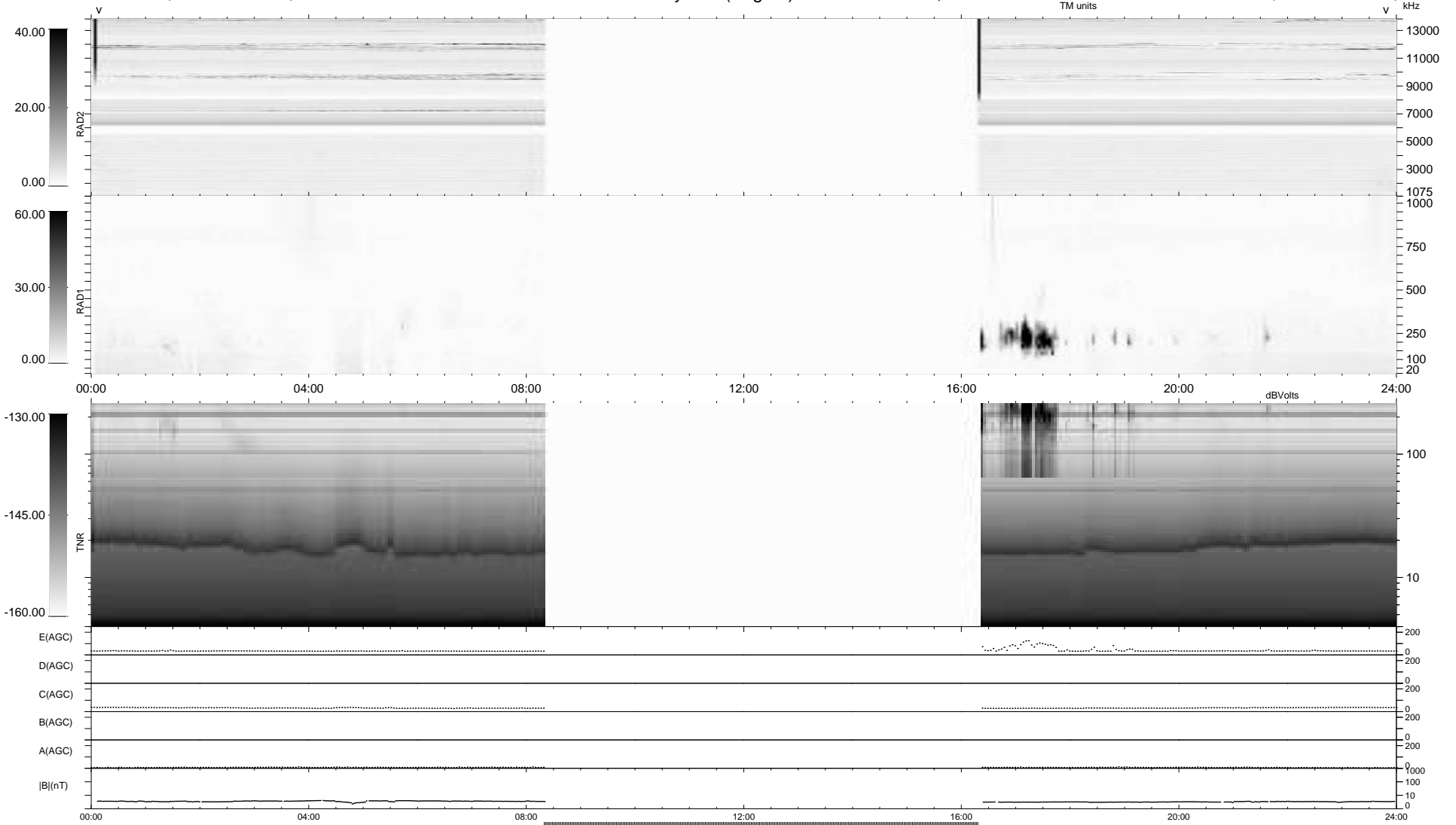


13 bad + 613 good MF/939MF projected (65%) - 313 missing MFs  
 Avg interval = 180 secs  
 Re = 264.02 (262.78, 3.88, 25.29 GSE)

1.7d VMS-SunOS LZ version = v01  
 DAILY Mon May 24, 2010  
 Re = 263.93 (262.71, 0.47, 25.33 GSE)

### WIND/WAVES Summary Plot (Page 1) for 23-MAY-2010, DOY = 143



RAD2 Antenna Ey .....  
 Mode LIN(1) .....  
 SUM/SEP SEP .....  
 Toggle OFF .....  
 RAD1 Antenna .....  
 Mode .....  
 SUM/SEP .....  
 Toggle .....  
 TNR Antenna ExEy .....  
 Mode A-32 .....  
 Sweep ACE .....