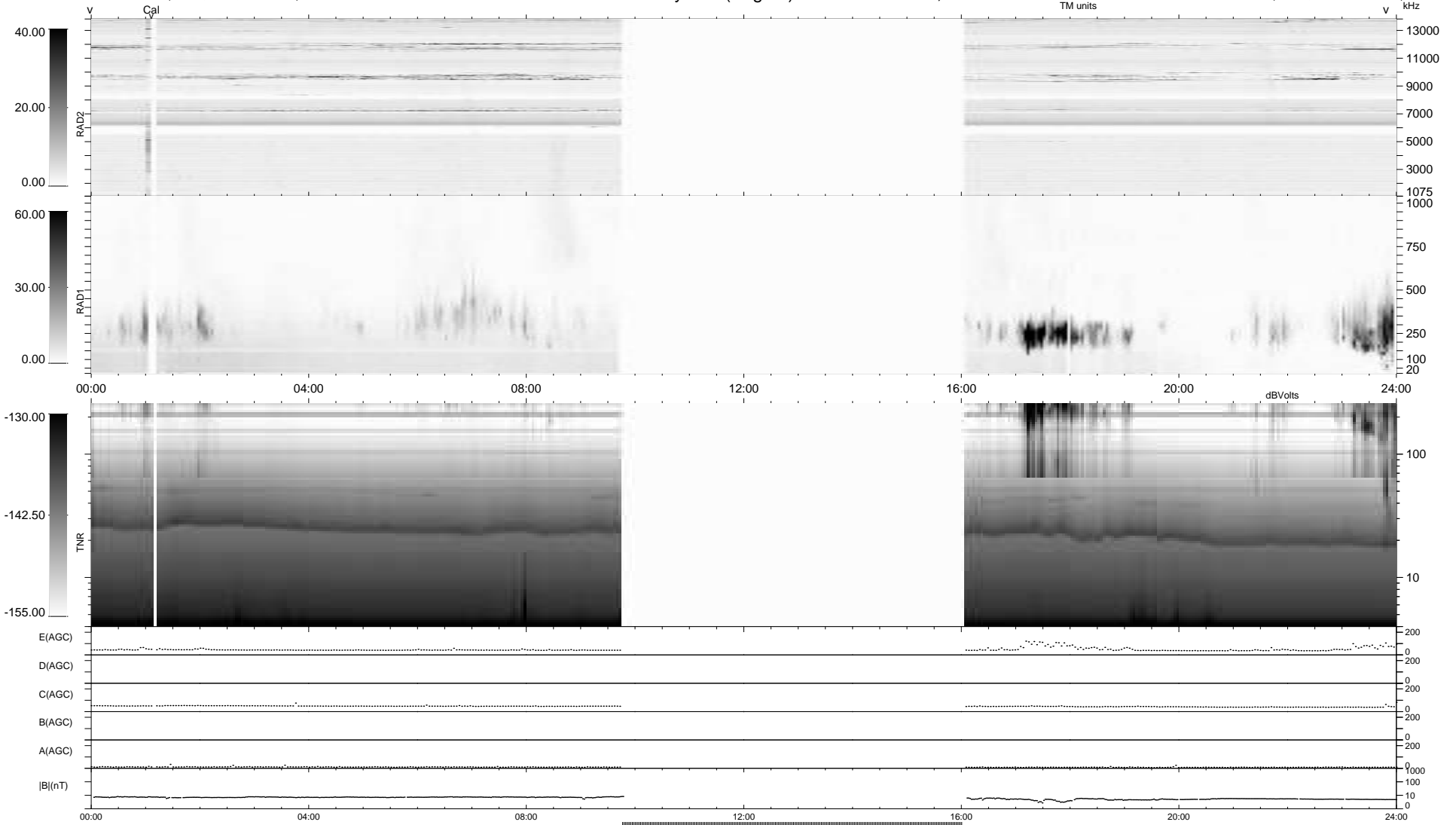


10 bad + 684 good MF/939MF projected (72%) - 245 missing MFs
 Avg interval = 180 secs
 Re = 264.30 (262.73, 14.03, 25.05 GSE)

1.7d VMS-SunOS LZ version = v01
 DAILY Sat May 22, 2010
 Re = 264.22 (262.80, 10.72, 25.15 GSE)

WIND/WAVES Summary Plot (Page 1) for 20-MAY-2010, DOY = 140



```

RAD2
Antenna Ey .....
Mode LIN(1) .....
SUM/SEP SEP .....
Toggle OFF .....

RAD1
Antenna Ex .....
Mode LIS(2/4) .....
SUM/SEP SUM .....
Toggle OFF .....

TNR
Antenna ExEy .....
Mode A-32 .....
Sweep ACE .....
  
```