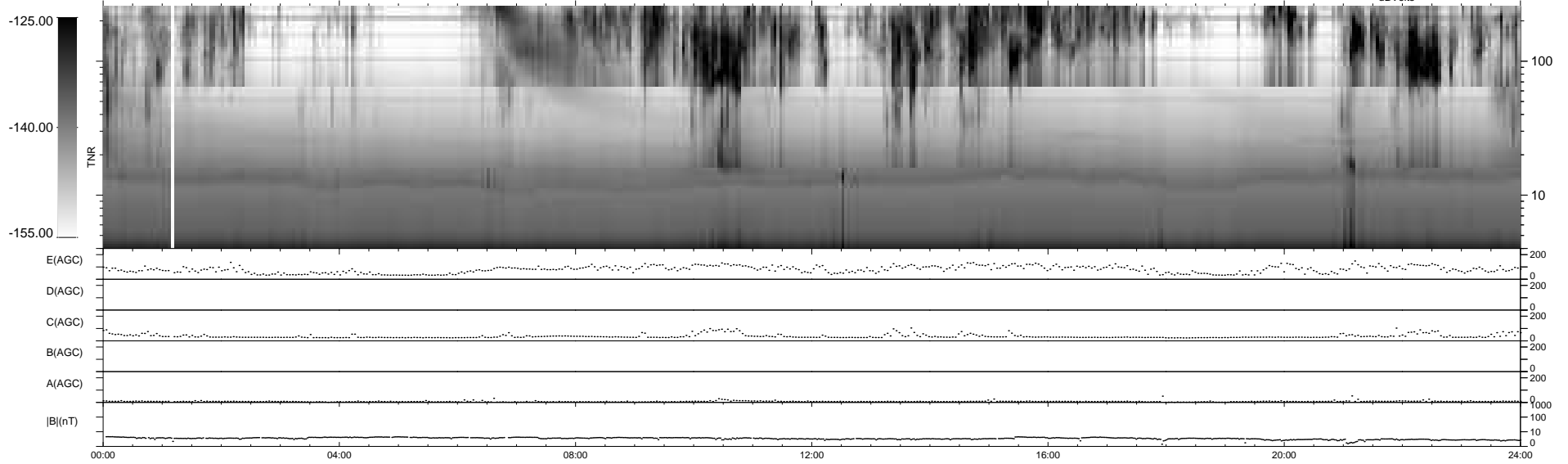
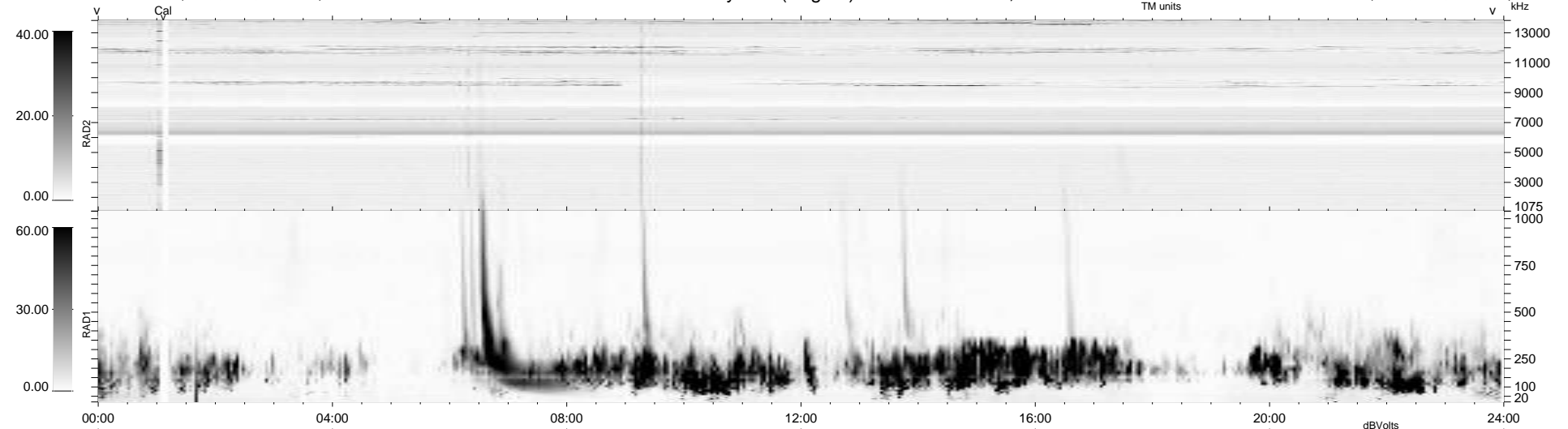


12 bad + 927 good MF/939MF projected (98%) - 0 missing MFs
 Avg interval = 180 secs
 Re = 260.41 (252.21, 61.62, 20.28 GSE)

1.7d VMS-SunOS LZ version = v01
 DAILY Wed May 5, 2010
 Re = 260.87 (253.28, 58.93, 20.75 GSE)

WIND/WAVES Summary Plot (Page 1) for 04-MAY-2010, DOY = 124



RAD2
 Antenna Ey
 Mode LIN(1)
 SUM/SEP SEP
 Toggle OFF
 RAD1
 Antenna Ex
 Mode LIS(2,4)
 SUM/SEP SUM
 Toggle OFF
 TNR
 Antenna ExEy
 Mode A-32
 Sweep ACE