

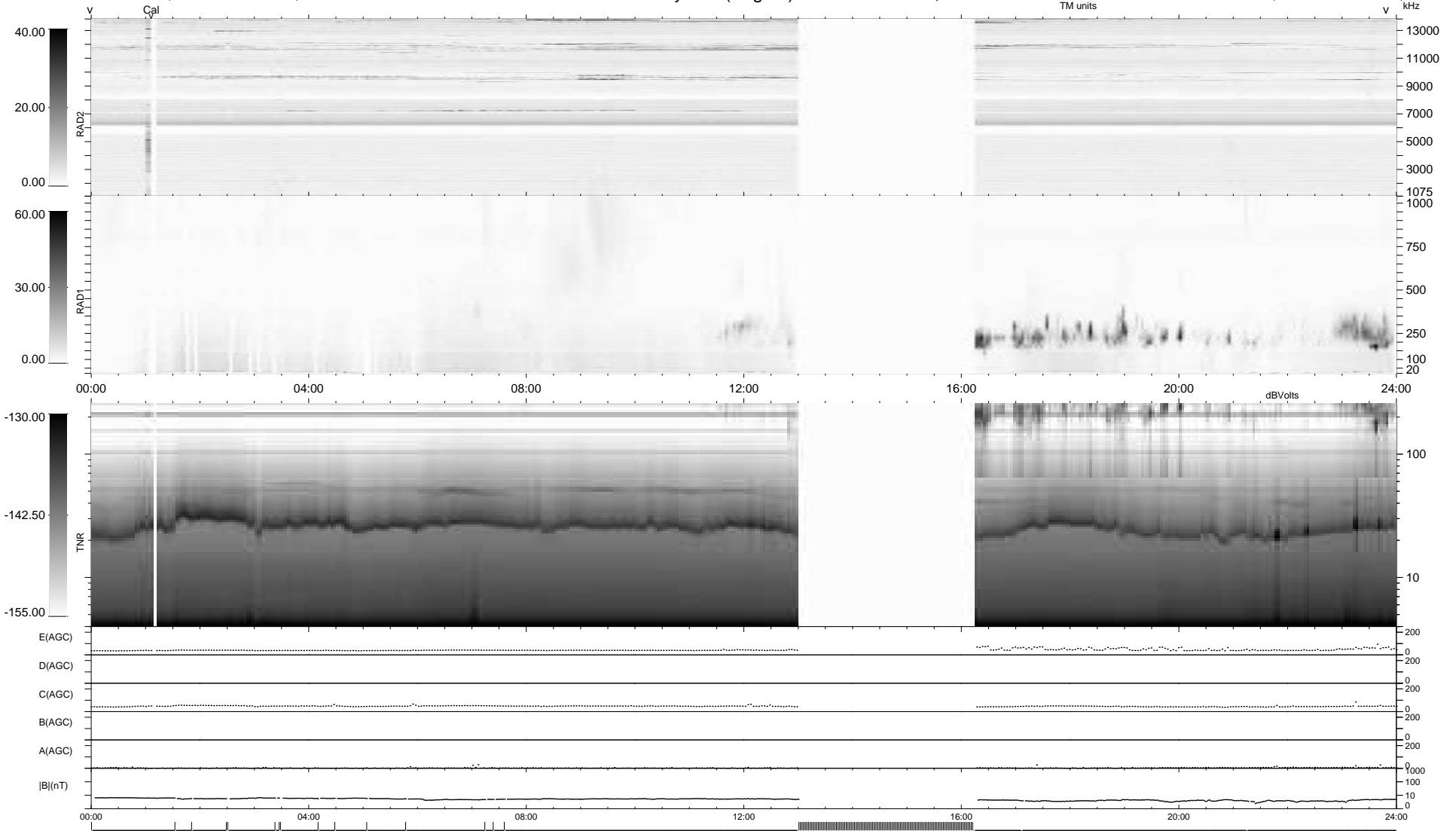
4 bad + 794 good MF/939MF projected (84%) - 141 missing MFs  
 Avg interval = 180 secs  
 Re = 257.77 (245.49, 76.75, 17.07 GSE)

1.7d VMS-SunOS

LZ version = v01

### WIND/WAVES Summary Plot (Page 1) for 28-APR-2010, DOY = 118

DAILY Fri Apr 30, 2010  
 Re = 258.18 (246.60, 74.42, 17.64 GSE)



RAD2  
 Antenna Ey .....  
 Mode LIN(1) .....  
 SUM/SEP SEP .....  
 Toggle OFF .....  
 RAD1  
 Antenna Ex .....  
 Mode LIS(2,4) .....  
 SUM/SEP SUM .....  
 Toggle OFF .....  
 TNR  
 Antenna ExEy .....  
 Mode A-32 .....  
 Sweep ACE .....