

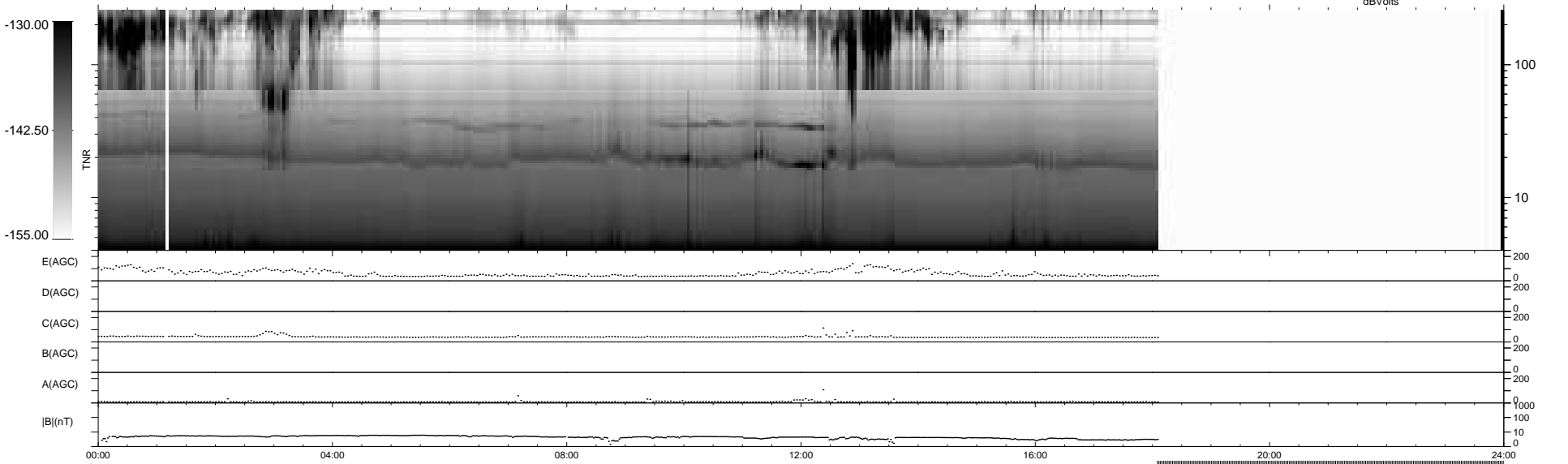
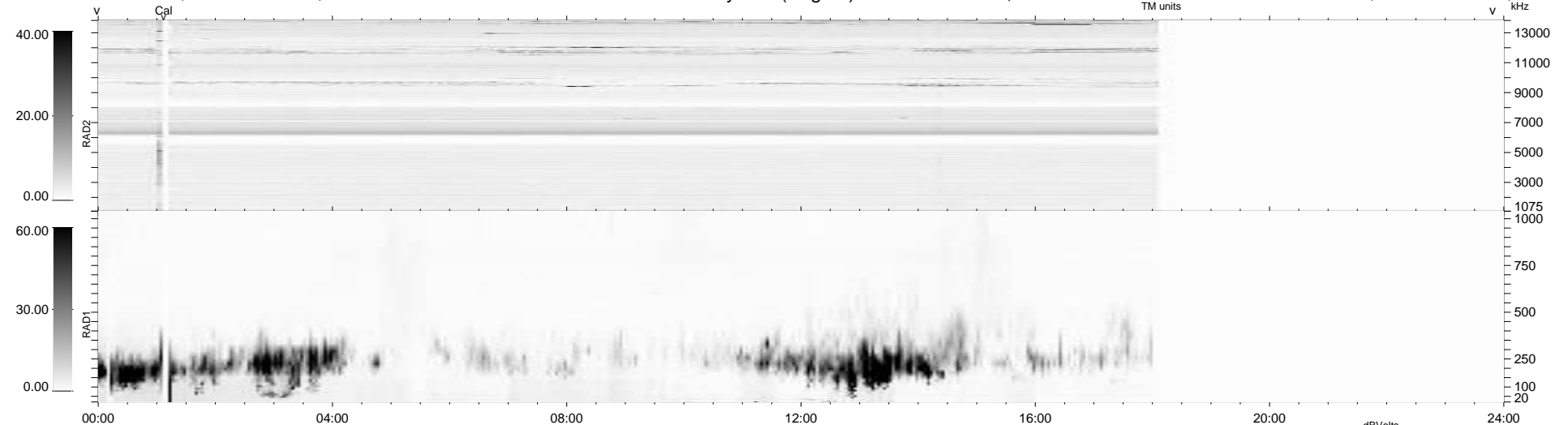
5 bad + 702 good MF/939MF projected (74%) - 232 missing MFs
 Avg interval = 180 secs
 Re = - 256.14 (241.14, 85.10, 14.64 GSE)

1.7d VMS-SunOS

LZ version = v01

WIND/WAVES Summary Plot (Page 1) for 24-APR-2010, DOY = 114

DAILY Mon Apr 26, 2010
 Re = 256.55 (242.21, 83.20, 15.26 GSE)



00:00 04:00 08:00 12:00 16:00 20:00 24:00

RAD2 Antenna Ey
 Mode LIN(1)
 SUM/SEP SEP
 Toggle OFF
 RAD1 Antenna Ex
 Mode LIS(2,4)
 SUM/SEP SUM
 Toggle OFF
 TNR Antenna ExEy
 Mode A-32
 Sweep ACE