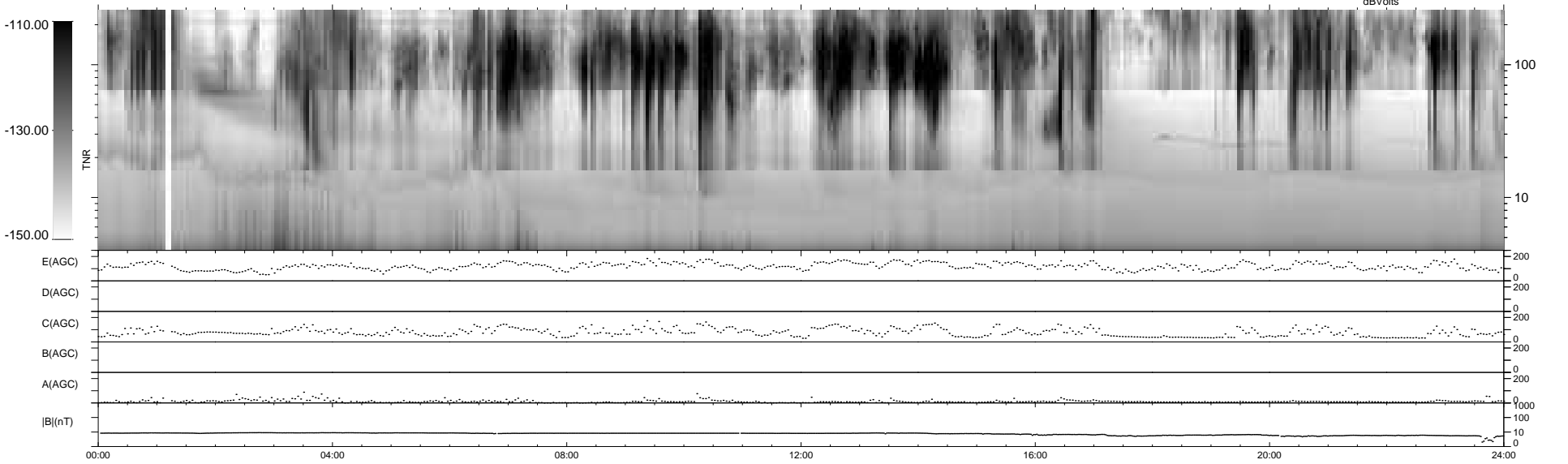
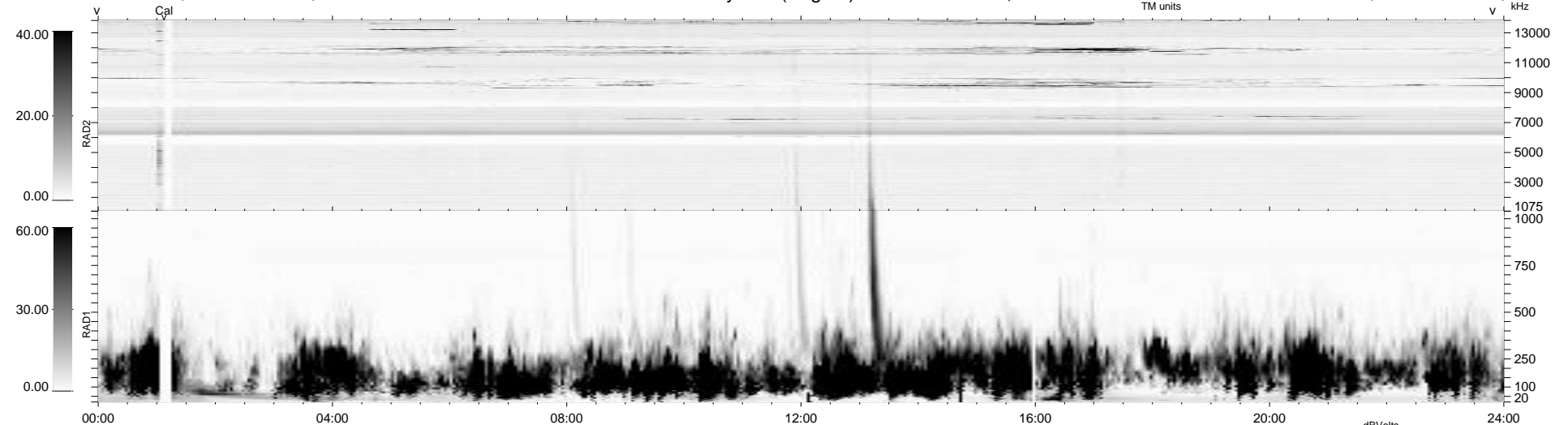


5 bad + 935 good MF/940MF projected (99%) - 0 missing MFs  
 Avg interval = 180 secs  
 Re = -240.07 (219.16, 97.98, 1.43 GSE)

1.7d VMS-SunOS LZ version = v03  
 DAILY Tue Apr 13, 2010  
 Re = 241.34 (220.46, 98.17, 2.23 GSE)

### WIND/WAVES Summary Plot (Page 1) for 06-APR-2010, DOY = 96



RAD2  
 Antenna Ey .....  
 Mode LIN(1) .....  
 SUM/SEP SEP .....  
 Toggle OFF .....  
 RAD1  
 Antenna Ex .....  
 Mode LIS(2/4) .....  
 SUM/SEP SUM .....  
 Toggle OFF .....  
 TNR  
 Antenna ExEy .....  
 Mode A-32 .....  
 Sweep ACE .....