

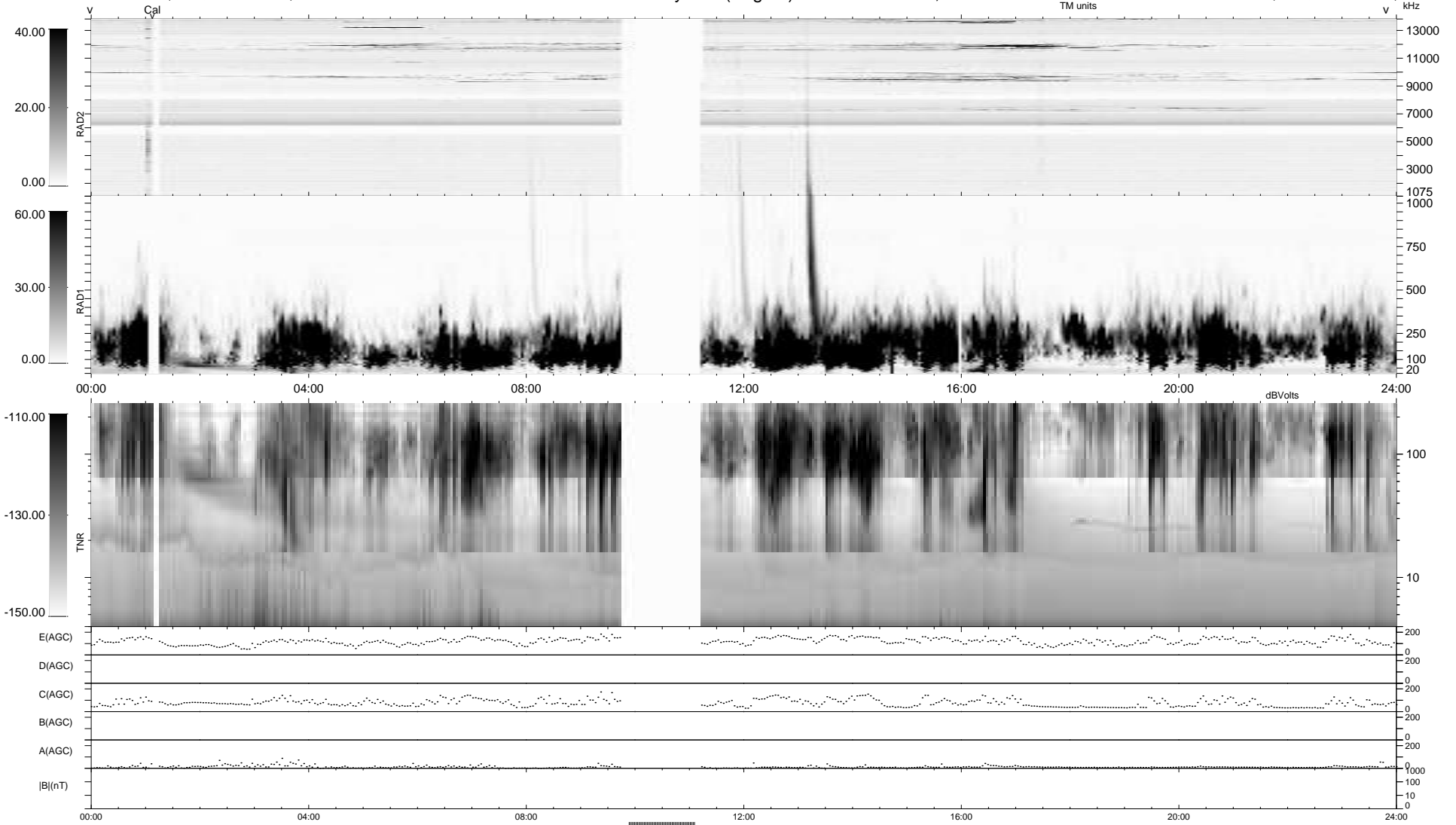
15 bad + 877 good MF/940MF projected (93%) - 48 missing MFs
 Avg interval = 180 secs
 Re = -240.07 (219.16, 97.98, 1.43 GSE)

1.7d VMS-SunOS

LZ version = v02

WIND/WAVES Summary Plot (Page 1) for 06-APR-2010, DOY = 96

DAILY Wed Apr 7, 2010
 Re = 241.34 (220.46, 98.17, 2.23 GSE)



RAD2
 Antenna Ey
 Mode LIN(1)
 SUM/SEP SEP
 Toggle OFF
 RAD1
 Antenna Ex
 Mode LIS(2,4)
 SUM/SEP SUM
 Toggle OFF
 TNR
 Antenna ExEy
 Mode A-32
 Sweep ACE