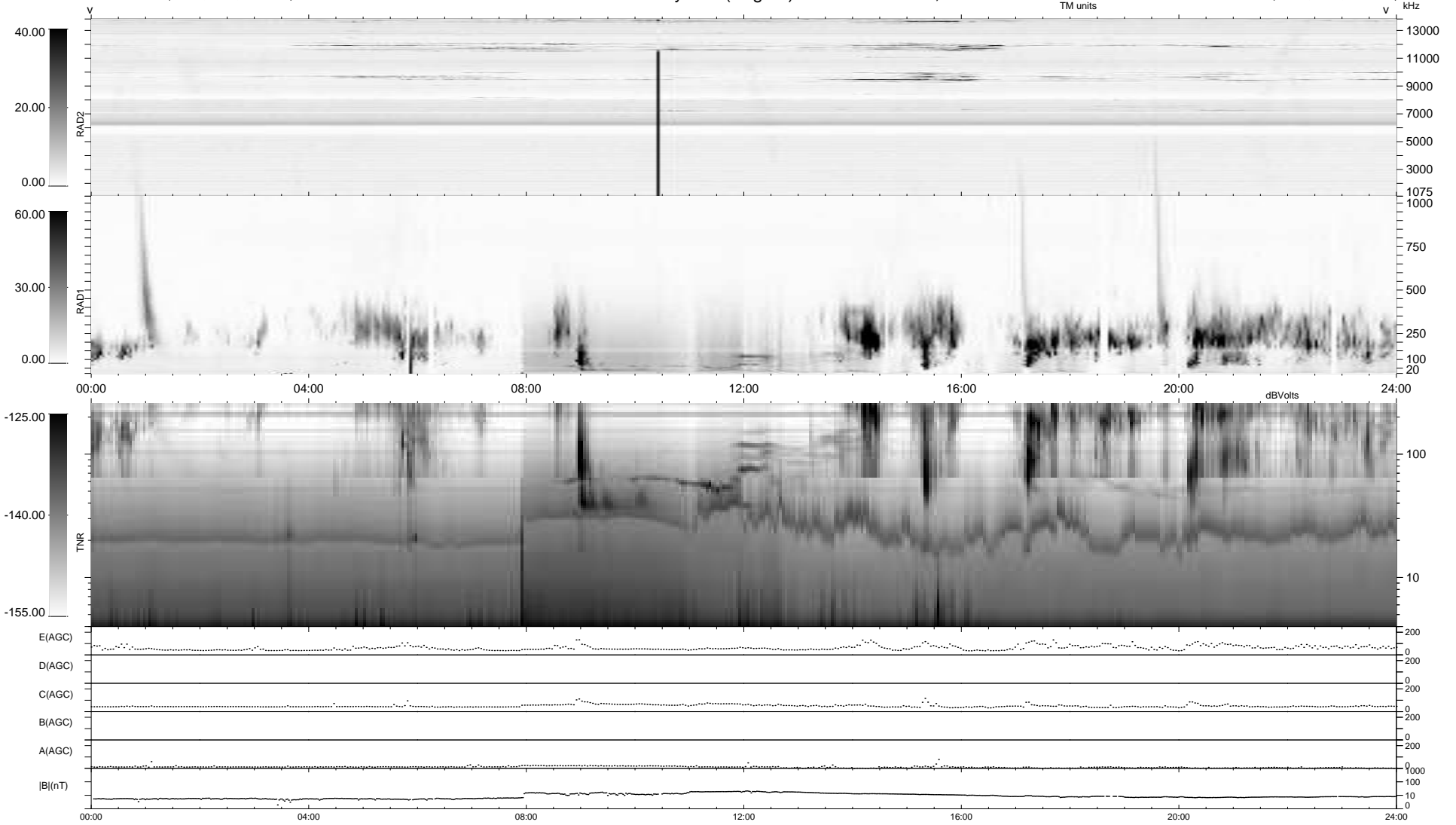


12 bad + 927 good MF/939MF projected (98%) - 0 missing MFs
 Avg interval = 180 secs
 Re = -238.78 (217.87, 97.70, 0.62 GSE)

1.7d VMS-SunOS LZ version = v02
 DAILY Tue Apr 13, 2010
 Re = 240.06 (219.15, 97.98, 1.43 GSE)

WIND/WAVES Summary Plot (Page 1) for 05-APR-2010, DOY = 95



```

RAD2
Antenna Ey .....
Mode LIN(1) .....
SUM/SEP SEP .....
Toggle OFF .....

RAD1
Antenna Ex .....
Mode LIS(2,4) .....
SUM/SEP SUM .....
Toggle OFF .....

TNR
Antenna ExEy .....
Mode A-32 .....
Sweep ACE .....
  
```