

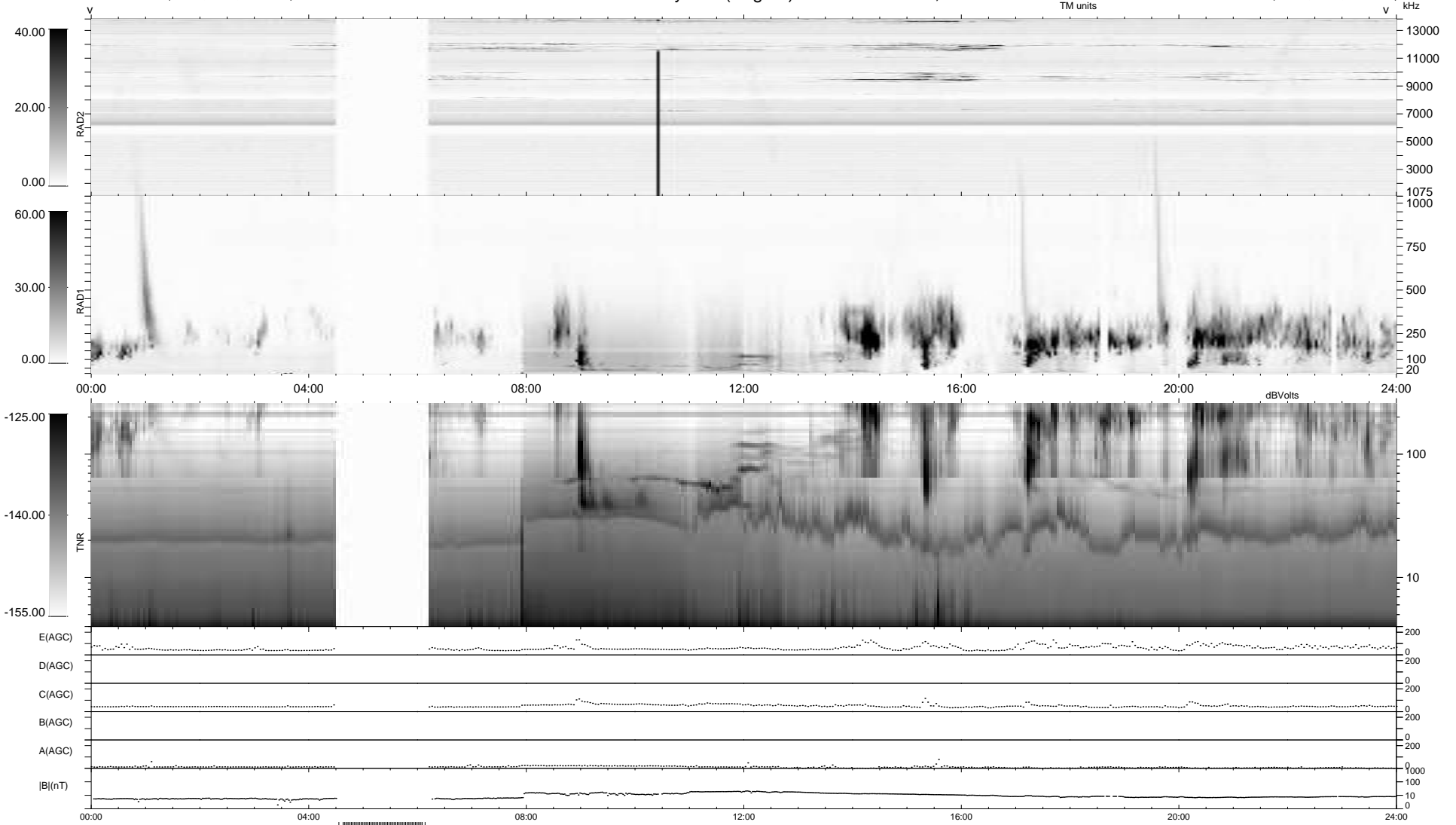
19 bad + 860 good MF/939MF projected (91%) - 60 missing MFs
 Avg interval = 180 secs
 Re = -238.78 (217.87, 97.70, 0.62 GSE)

1.7d VMS-SunOS

LZ version = v01

WIND/WAVES Summary Plot (Page 1) for 05-APR-2010, DOY = 95

DAILY Tue Apr 6, 2010
 Re = 240.06 (219.15, 97.98, 1.43 GSE)



RAD2
 Antenna Ey
 Mode LIN(1)
 SUM/SEP SEP
 Toggle OFF
 RAD1
 Antenna Ex
 Mode LIS(2,4)
 SUM/SEP SUM
 Toggle OFF
 TNR
 Antenna ExEy
 Mode A-32
 Sweep ACE