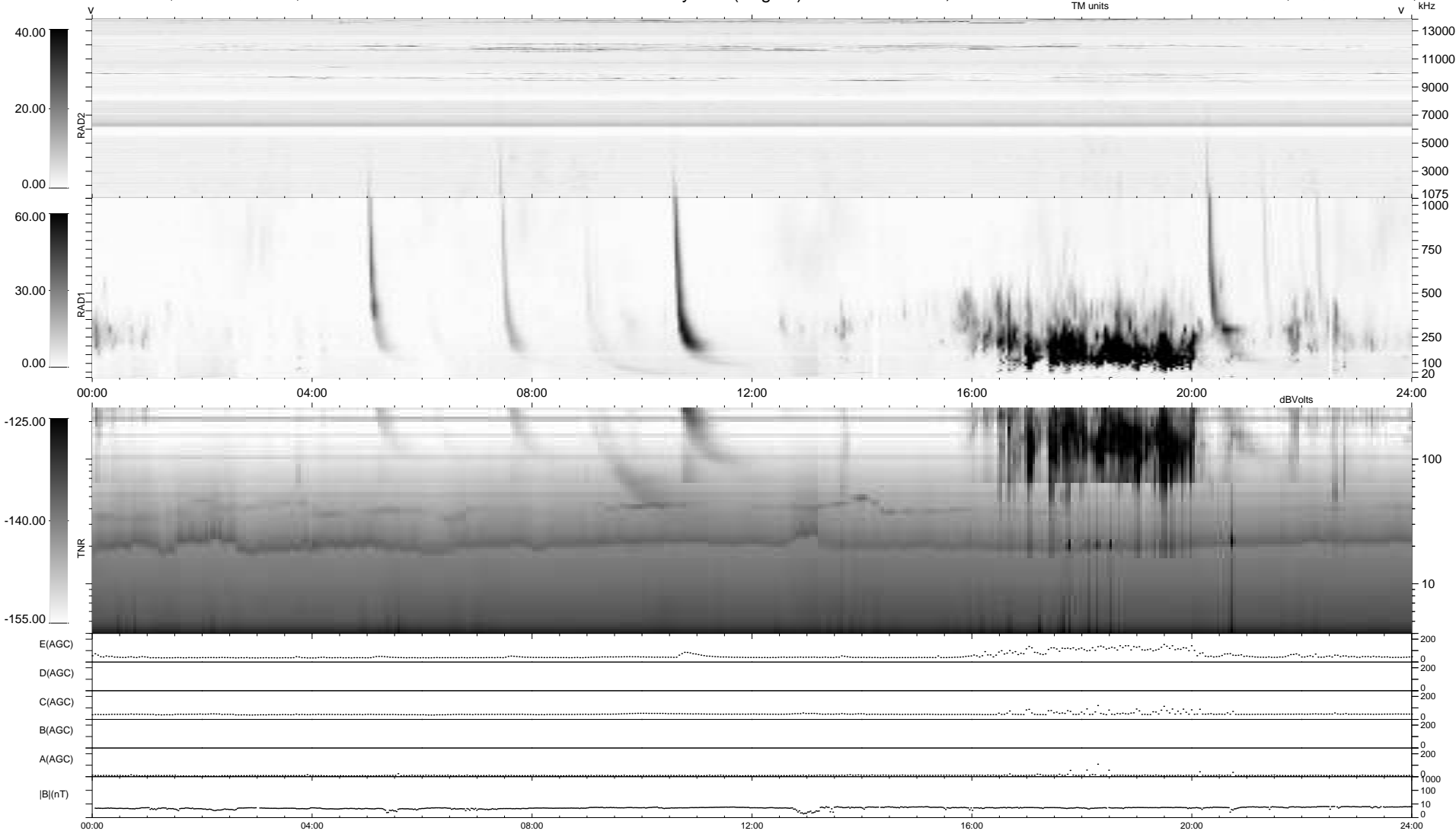


7 bad + 932 good MF/939MF projected (99%) - 0 missing MFs
 Avg interval = 180 secs
 Re = 236.18 (215.40, 96.87, -0.99 GSE)

1.7d VMS-SunOS LZ version = v01
 DAILY Mon Apr 5, 2010
 Re = 237.47 (216.61, 97.33, -0.19 GSE)

WIND/WAVES Summary Plot (Page 1) for 03-APR-2010, DOY = 93



```

RAD2
Antenna Ey .....
Mode LIN(1) .....
SUM/SEP SEP .....
Toggle OFF .....

RAD1
Antenna Ex .....
Mode LIS(2,4) .....
SUM/SEP SUM .....
Toggle OFF .....

TNR
Antenna ExEy .....
Mode A-32 .....
Sweep ACE .....
  
```