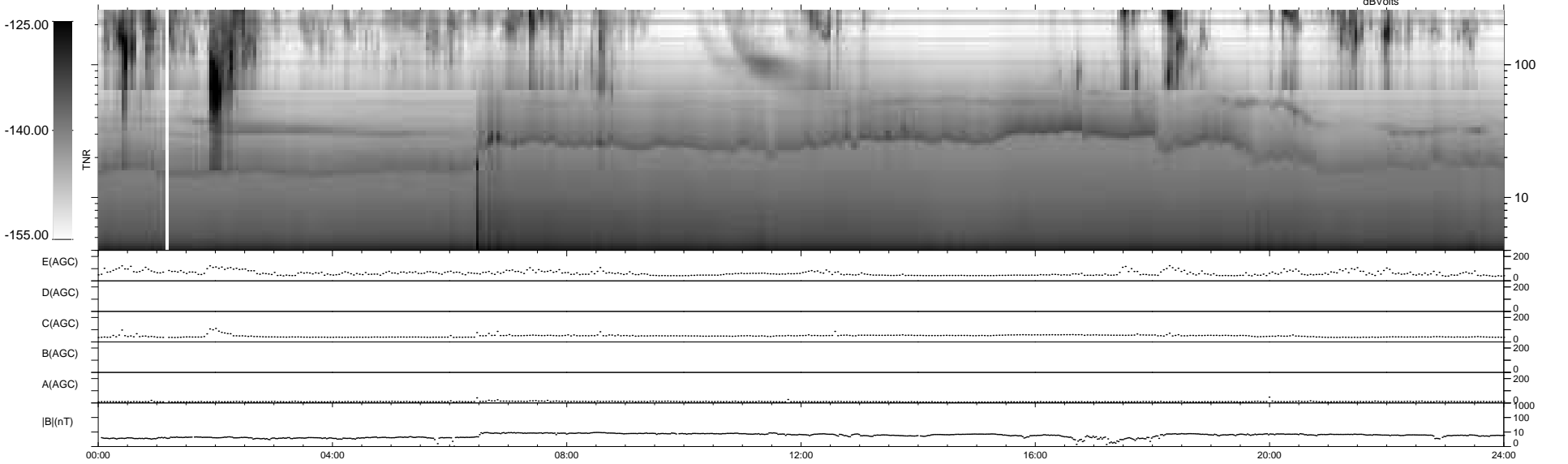
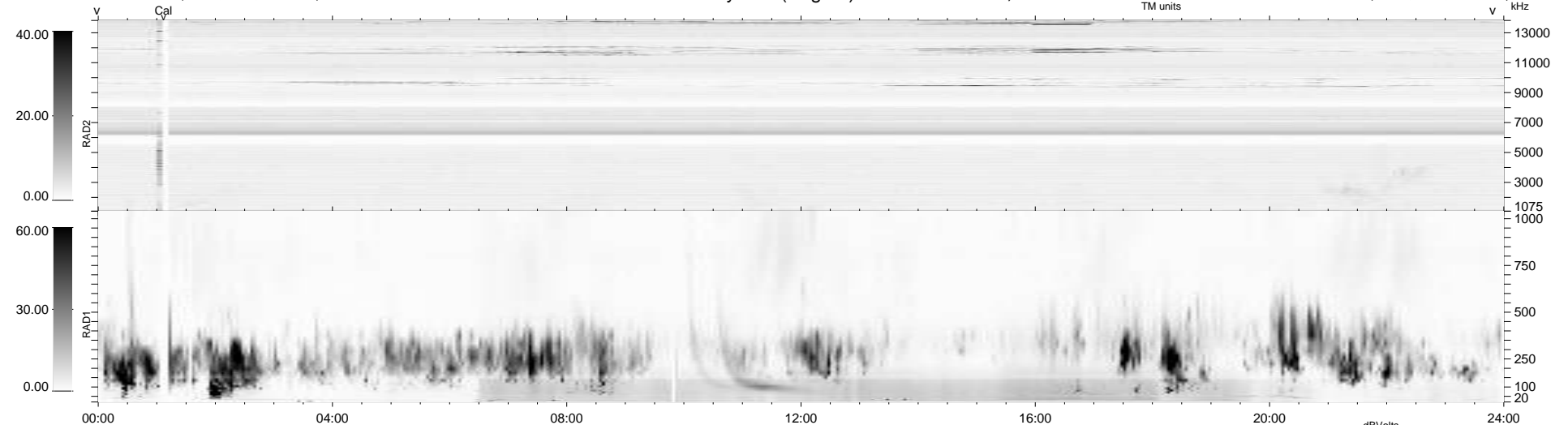


5 bad + 934 good MF/939MF projected (99%) - 0 missing MFs
 Avg interval = 180 secs
 Re = 234.88 (214.22, 96.31, -1.79 GSE)

1.7d VMS-SunOS LZ version = v01
 DAILY Mon Apr 5, 2010
 Re = 236.17 (215.39, 96.86, -1.00 GSE)

WIND/WAVES Summary Plot (Page 1) for 02-APR-2010, DOY = 92



RAD2
 Antenna Ey
 Mode LIN(1)
 SUM/SEP SEP
 Toggle OFF
 RAD1
 Antenna Ex
 Mode LIS(2,4)
 SUM/SEP SUM
 Toggle OFF
 TNR
 Antenna ExEy
 Mode A-32
 Sweep ACE