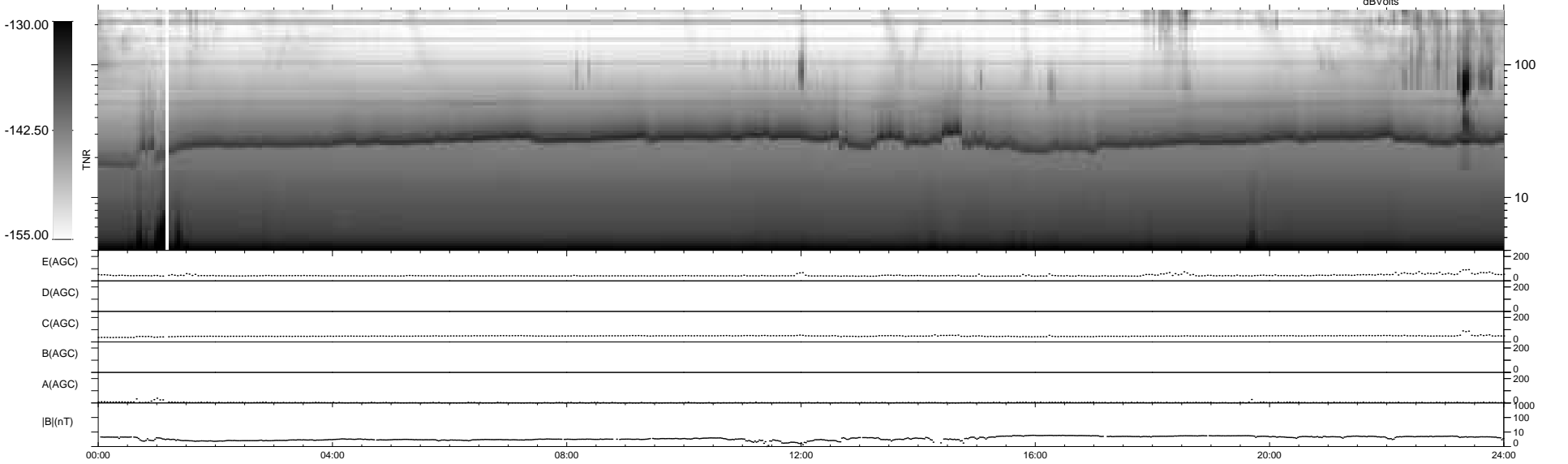
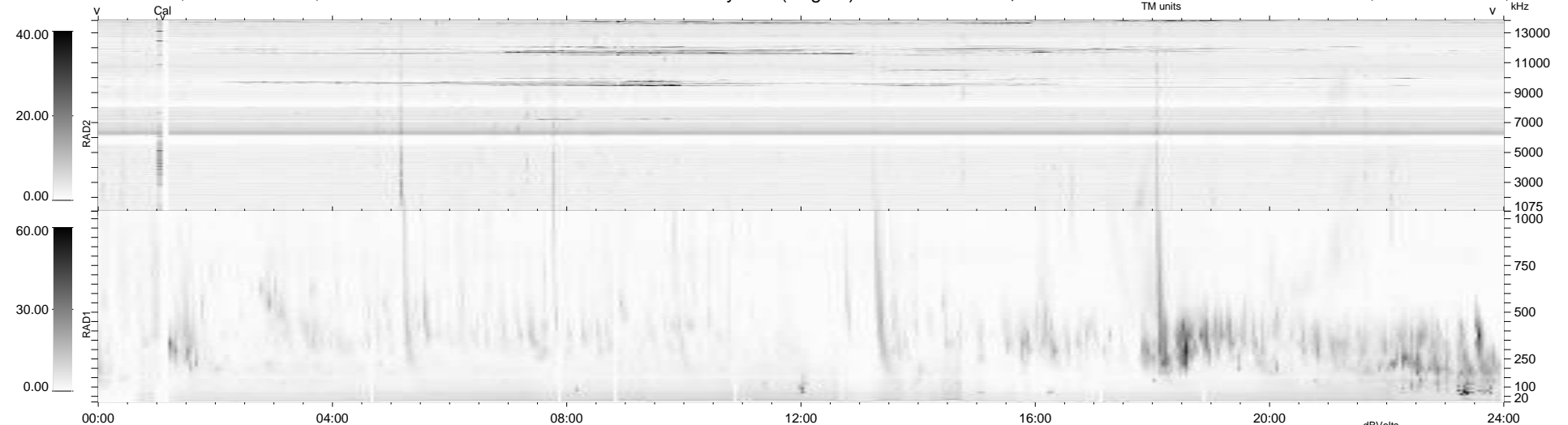


12 bad + 927 good MF/939MF projected (98%) - 0 missing MFs  
 Avg interval = 180 secs  
 Re = 229.83 (210.11, 93.00, -4.95 GSE)

1.7d VMS-SunOS LZ version = v01  
 DAILY Tue Mar 30, 2010  
 Re = 231.06 (211.04, 93.99, -4.18 GSE)

### WIND/WAVES Summary Plot (Page 1) for 29-MAR-2010, DOY = 88



RAD2 Antenna Ey .....  
 Mode LIN(1) .....  
 SUM/SEP SEP .....  
 Toggle OFF .....  
 RAD1 Antenna Ex .....  
 Mode LIS(2,4) .....  
 SUM/SEP SUM .....  
 Toggle OFF .....  
 TNR Antenna ExEy .....  
 Mode A-32 .....  
 Sweep ACE .....