

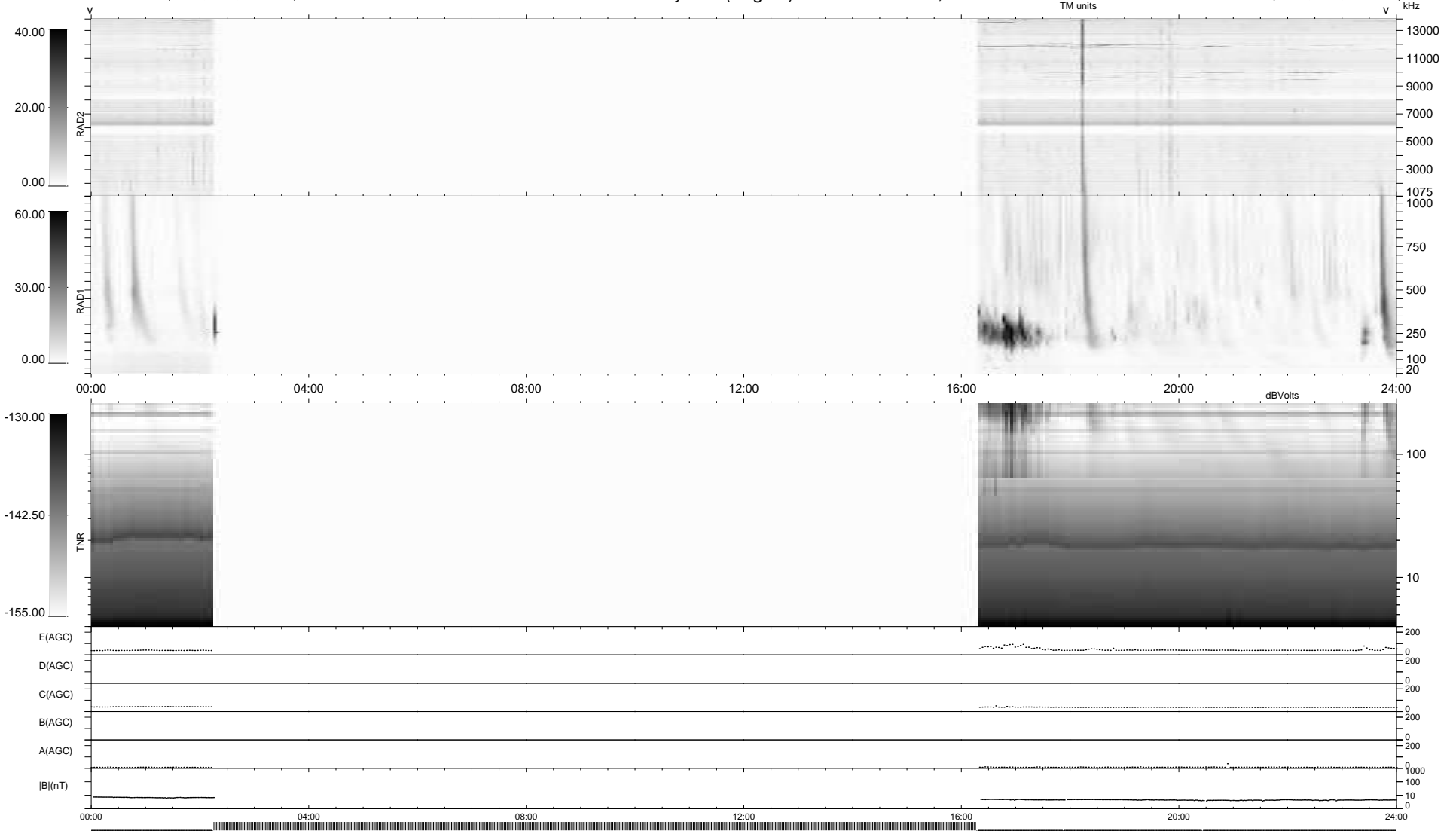
4 bad + 386 good MF/939MF projected (41%) - 549 missing MFs
 Avg interval = 180 secs
 Re = 228.60 (209.24, 91.87, -5.71 GSE)

1.7d VMS-SunOS

LZ version = v02

WIND/WAVES Summary Plot (Page 1) for 28-MAR-2010, DOY = 87

DAILY Wed Mar 31, 2010
 Re = 229.82 (210.10, 92.99, -4.95 GSE)



```

RAD2
Antenna Ey .....
Mode LIN(1) .....
SUM/SEP SEP .....
Toggle OFF .....

RAD1
Antenna Ex .....
Mode LIS(2,4) .....
SUM/SEP SUM .....
Toggle OFF .....

TNR
Antenna ExEy .....
Mode A-32 .....
Sweep ACE .....
  
```