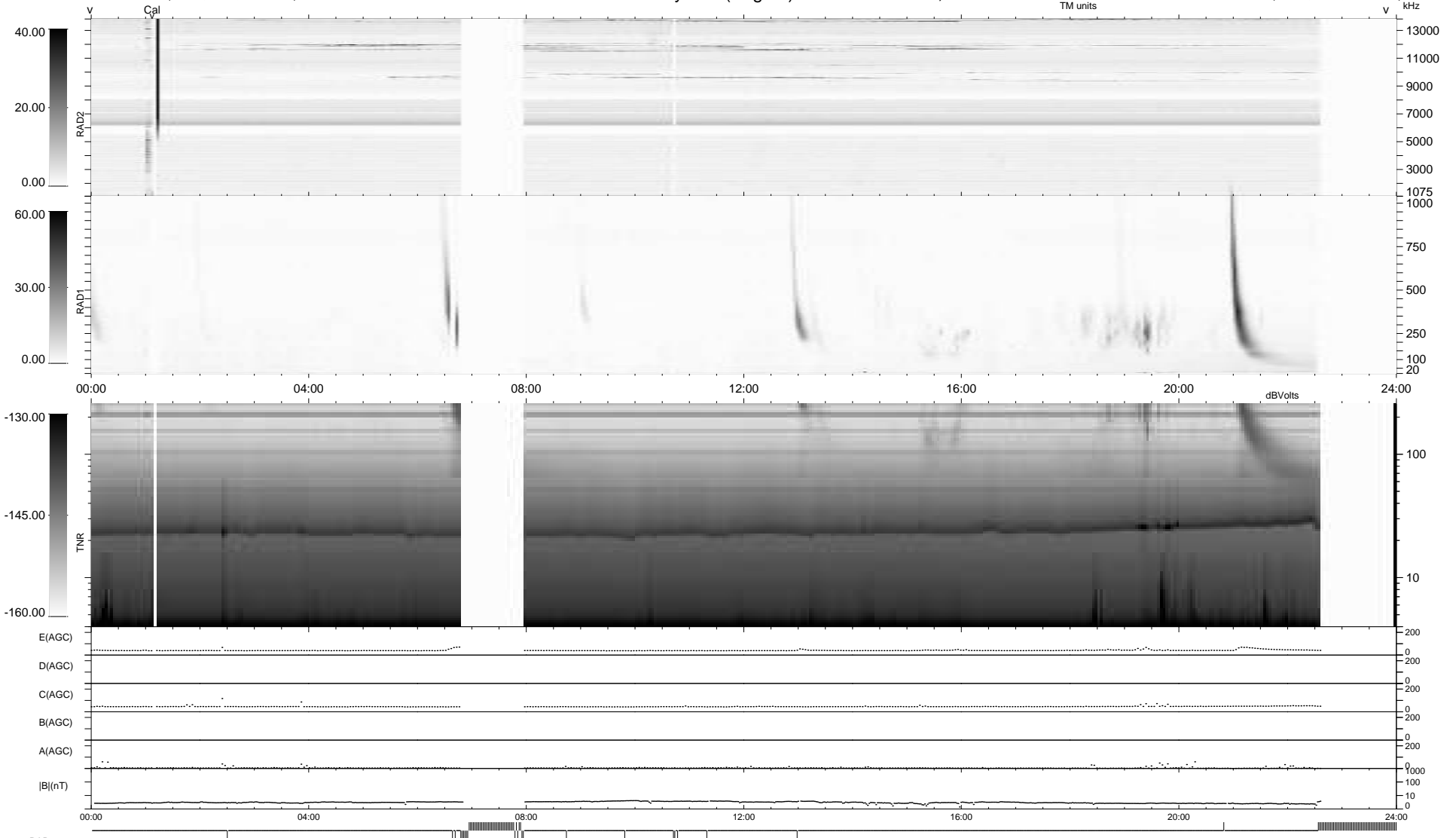


20 bad + 825 good MF/939MF projected (87%) - 94 missing MFs  
 Avg interval = 180 secs  
 Re = 222.47 (205.75, 84.09, -9.38 GSE)

1.7d VMS-SunOS LZ version = v01  
 DAILY Wed Mar 24, 2010  
 Re = 223.70 (206.36, 85.93, -8.67 GSE)

### WIND/WAVES Summary Plot (Page 1) for 23-MAR-2010, DOY = 82



```

RAD2
Antenna Ey .....
Mode LIN(1) .....
SUM/SEP SEP .....
Toggle OFF .....

RAD1
Antenna Ex .....
Mode LIS(2,4) .....
SUM/SEP SUM .....
Toggle OFF .....

TNR
Antenna ExEy .....
Mode A-32 .....
Sweep ACE .....
  
```