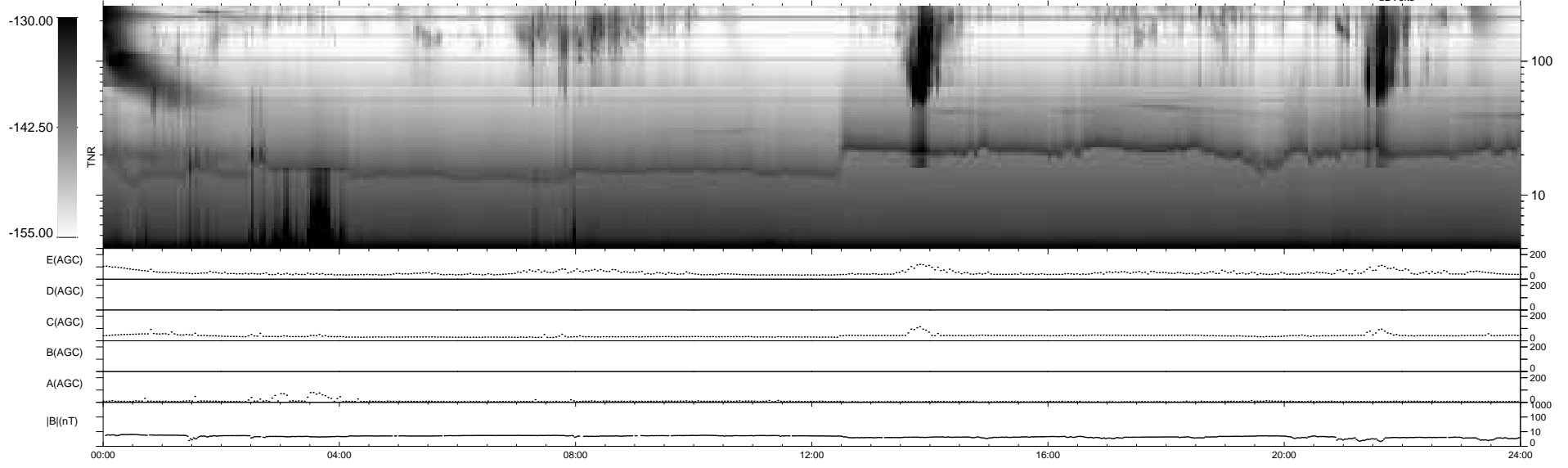
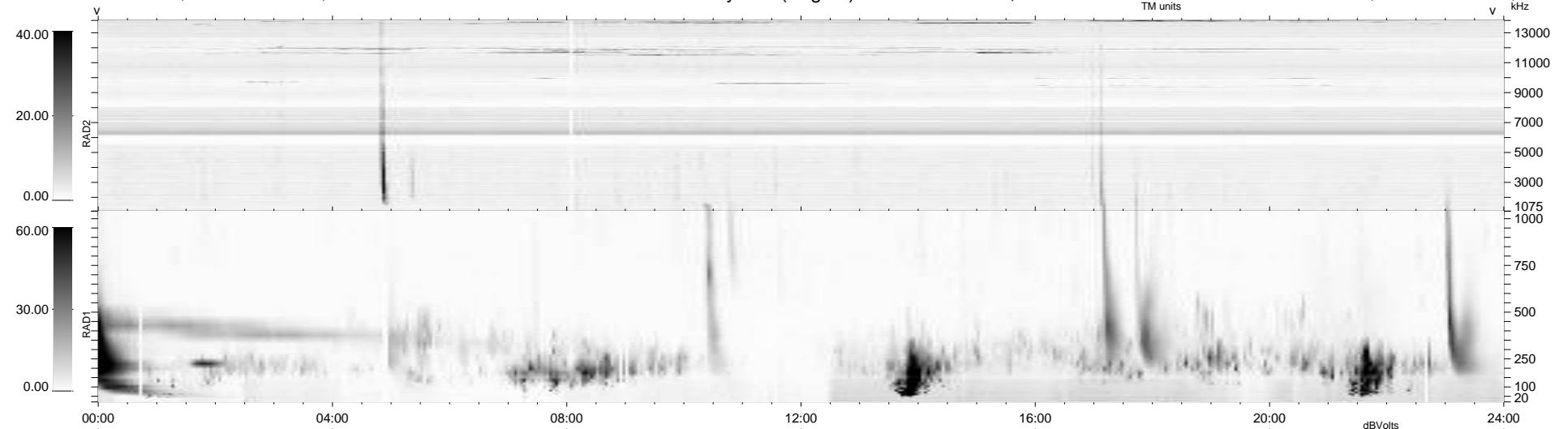


15 bad + 925 good MF/940MF projected (98%) - 0 missing MFs  
 Avg interval = 180 secs  
 Re = 210.75 (201.01, 61.50, -15.16 GSE)

1.7d VMS-SunOS LZ version = v01  
 DAILY Mon Mar 15, 2010  
 Re = 212.06 (201.51, 64.42, -14.59 GSE)

### WIND/WAVES Summary Plot (Page 1) for 14-MAR-2010, DOY = 73



```

RAD2
Antenna Ey .....
Mode LIN(1) .....
SUM/SEP SEP .....
Toggle OFF .....

RAD1
Antenna Ex .....
Mode LIS(2,4) .....
SUM/SEP SUM .....
Toggle OFF .....

TNR
Antenna ExEy .....
Mode A-32 .....
Sweep ACE .....
  
```