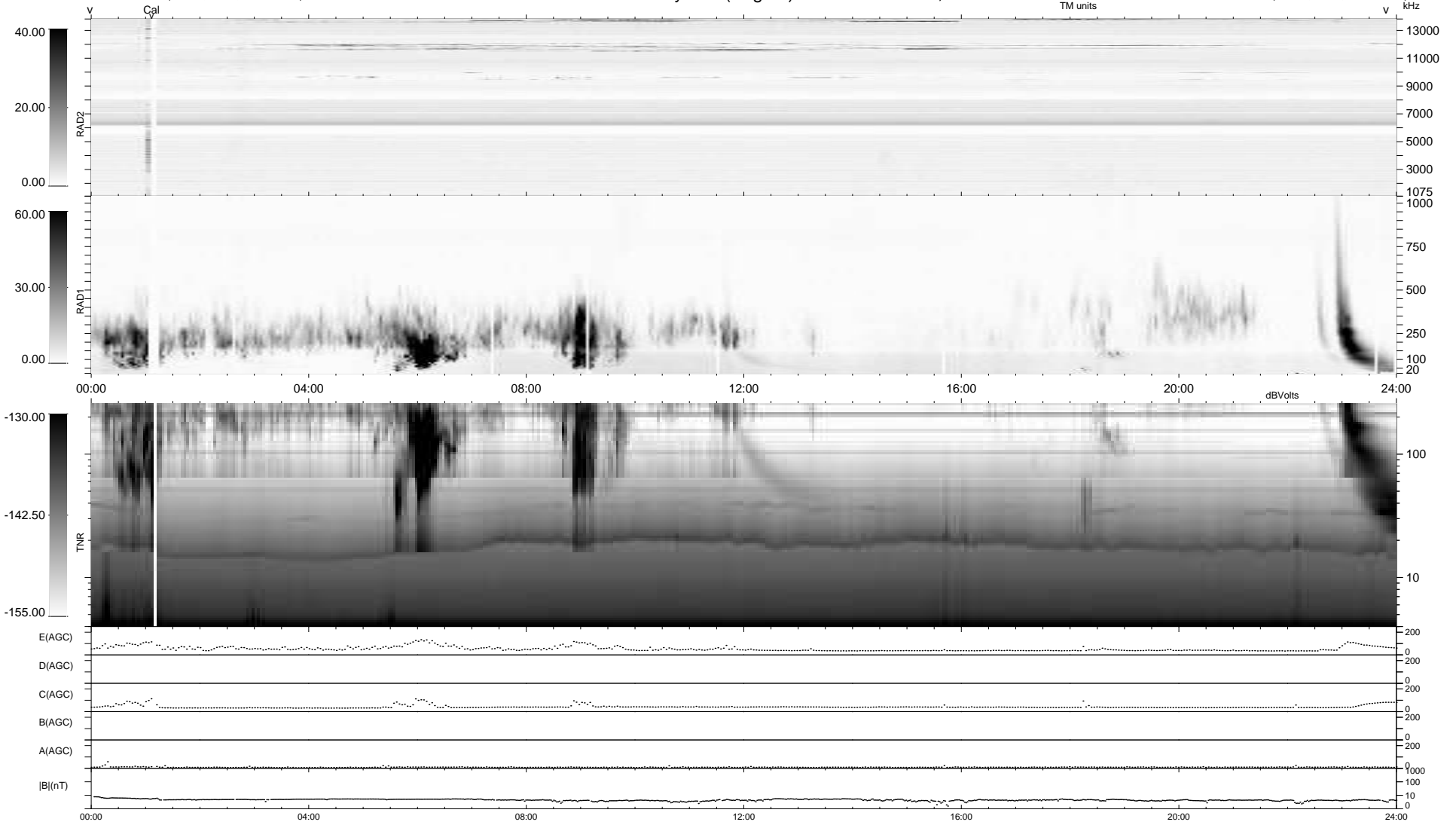


8 bad + 931 good MF/939MF projected (99%) - 0 missing MFs
 Avg interval = 180 secs
 Re = 206.91 (199.52, 52.19, -16.75 GSE)

1.7d VMS-SunOS LZ version = v01
 DAILY Fri Mar 12, 2010
 Re = 208.15 (200.00, 55.34, -16.25 GSE)

WIND/WAVES Summary Plot (Page 1) for 11-MAR-2010, DOY = 70



```

RAD2
Antenna Ey .....
Mode LIN(1) .....
SUM/SEP SEP .....
Toggle OFF .....

RAD1
Antenna Ex .....
Mode LIS(2,4) .....
SUM/SEP SUM .....
Toggle OFF .....

TNR
Antenna ExEy .....
Mode A-32 .....
Sweep ACE .....
  
```