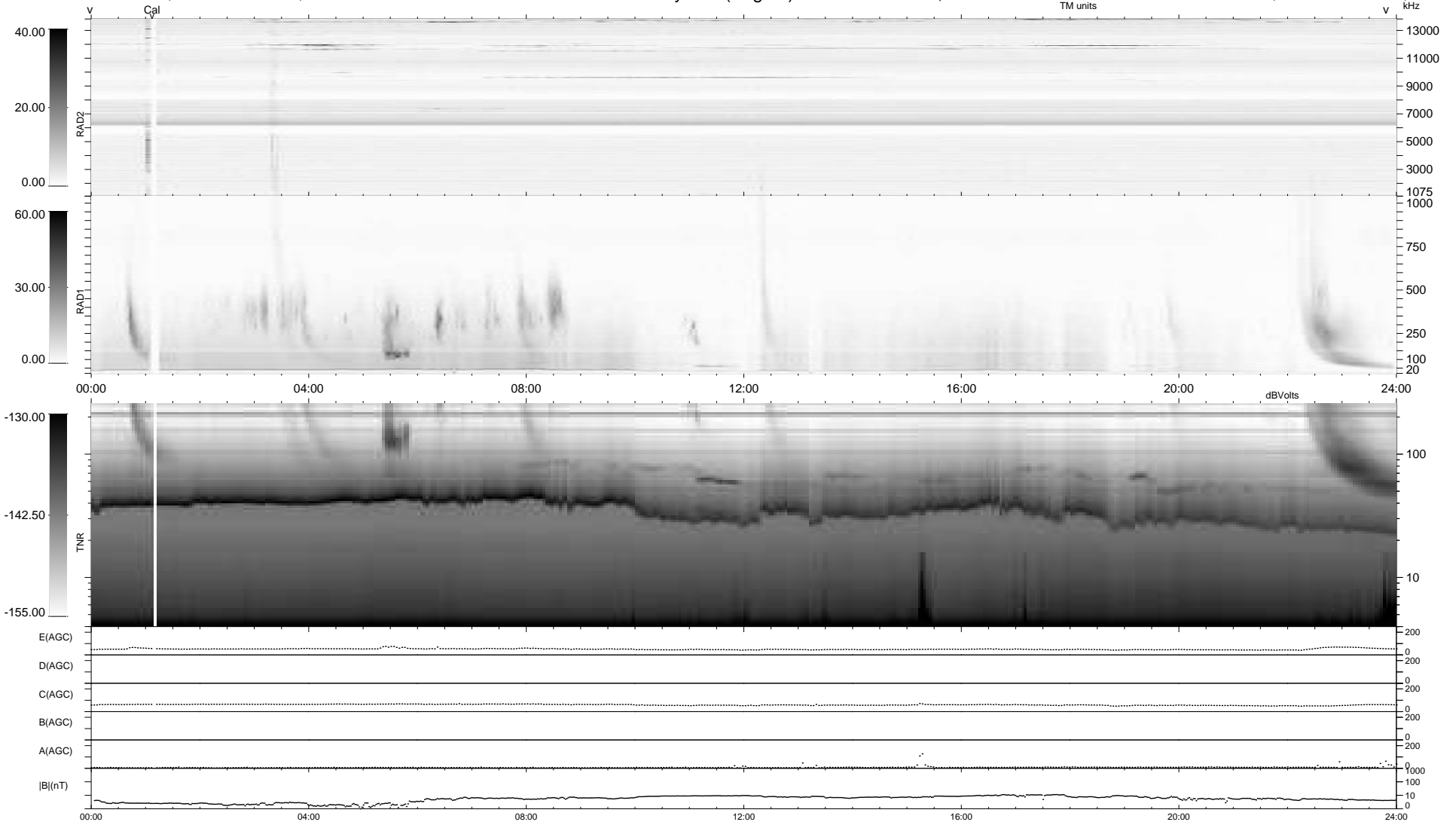


17 bad + 922 good MF/939MF projected (98%) - 0 missing MFs
 Avg interval = 180 secs
 Re = 197.85 (195.97, 18.35, -20.05 GSE)

1.7d VMS-SunOS LZ version = v01
 DAILY Tue Mar 2, 2010
 Re = 198.35 (196.14, 21.83, -19.88 GSE)

WIND/WAVES Summary Plot (Page 1) for 01-MAR-2010, DOY = 60



RAD2
 Antenna Ey
 Mode LIN(1)
 SUM/SEP SEP
 Toggle OFF
 RAD1
 Antenna Ex
 Mode LIS(2,4)
 SUM/SEP SUM
 Toggle OFF
 TNR
 Antenna ExEy
 Mode A-32
 Sweep ACE