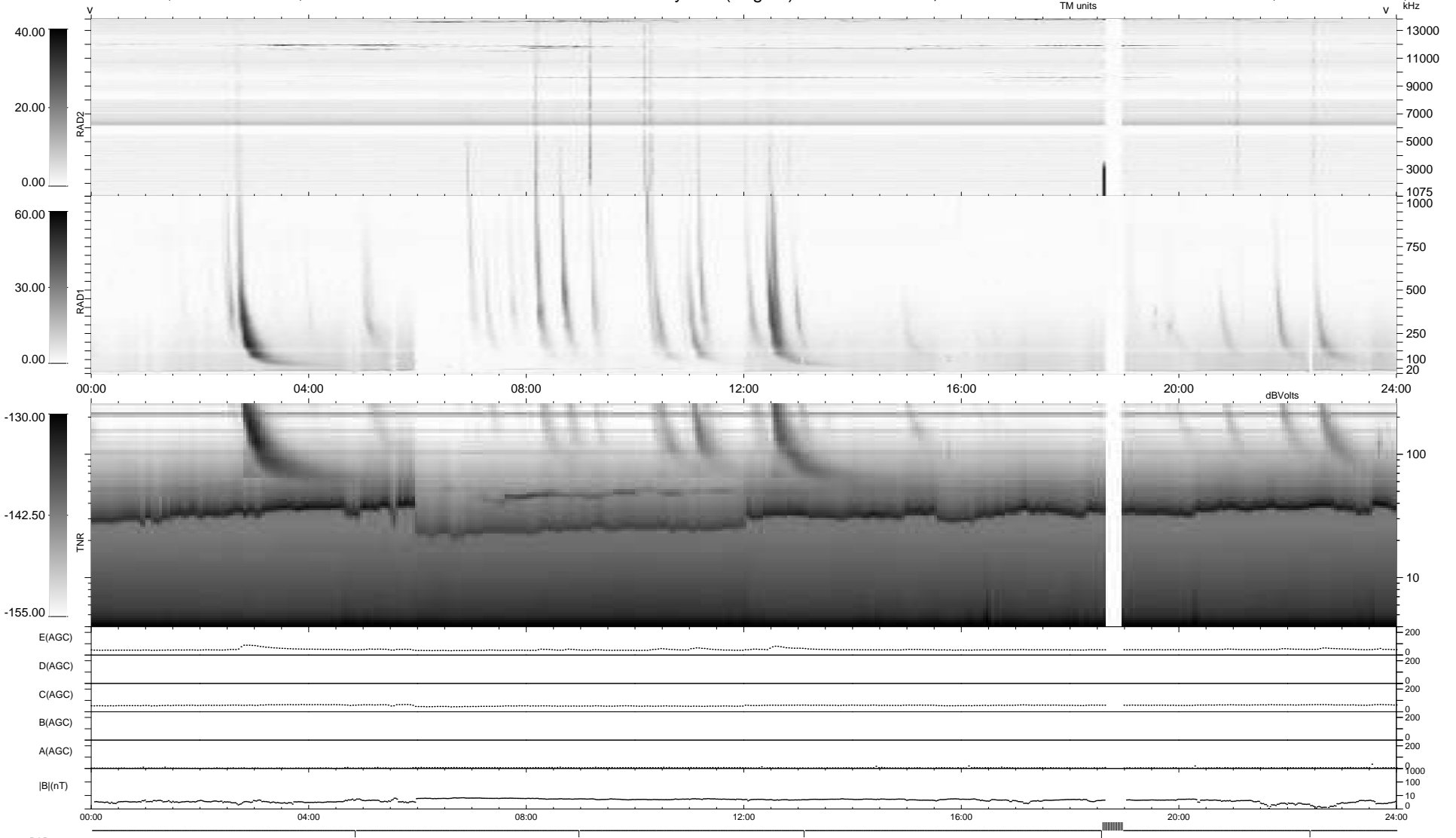


5 bad + 919 good MF/939MF projected (97%) - 15 missing MFs
 Avg interval = 180 secs
 Re = 197.45 (195.86, 14.82, -20.17 GSE)

1.7d VMS-SunOS LZ version = v01
 DAILY Mon Mar 1, 2010
 Re = 197.85 (195.97, 18.33, -20.05 GSE)

WIND/WAVES Summary Plot (Page 1) for 28-FEB-2010, DOY = 59



```

RAD2
Antenna Ey .....
Mode LIN(1) .....
SUM/SEP SEP .....
Toggle OFF .....

RAD1
Antenna Ex .....
Mode LIS(2,4) .....
SUM/SEP SUM .....
Toggle OFF .....

TNR
Antenna ExEy .....
Mode A-32 .....
Sweep ACE .....
  
```