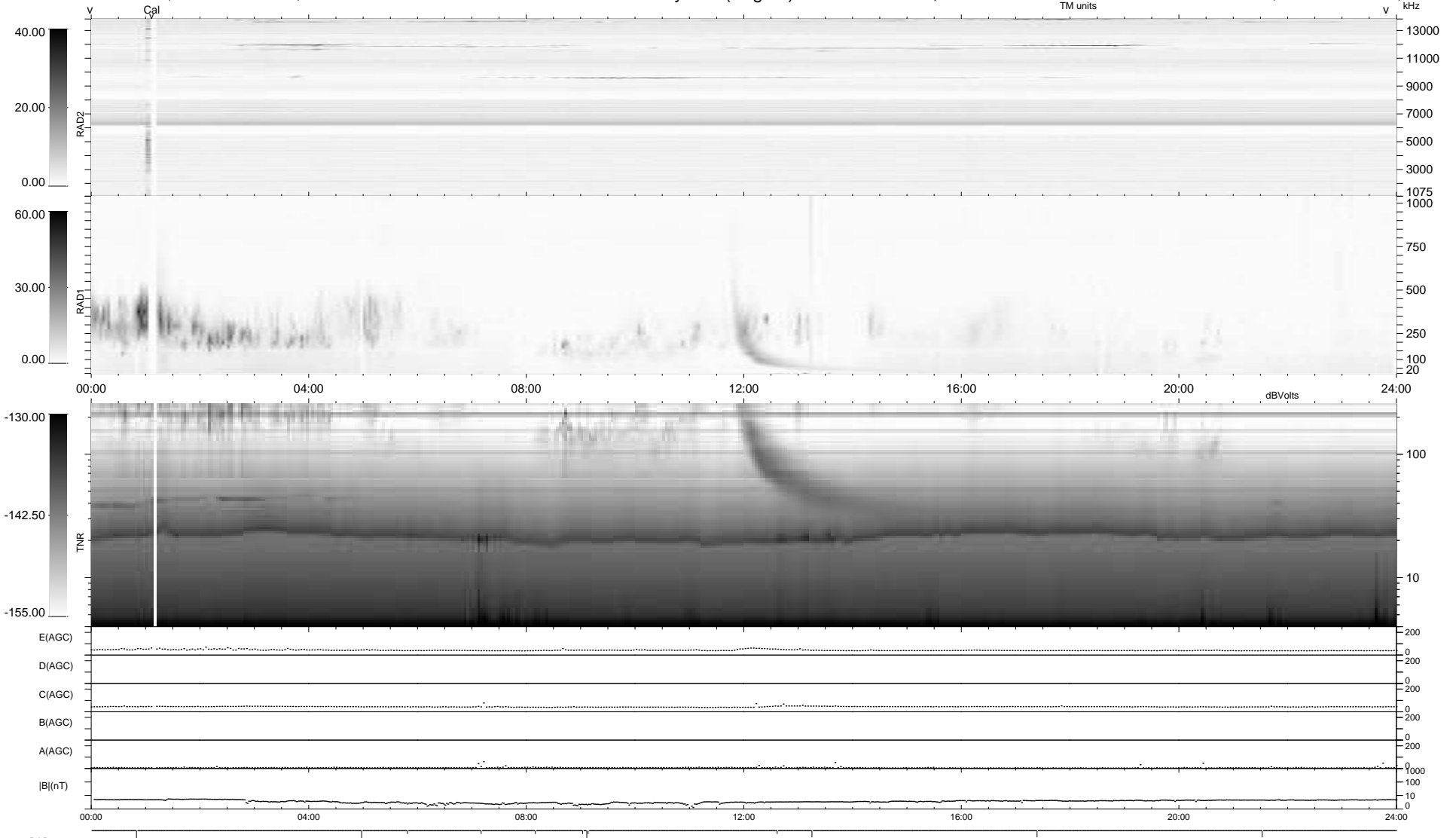


12 bad + 927 good MF/939MF projected (98%) - 0 missing MFs
 Avg interval = 180 secs
 Re = 197.08 (196.01, -3.34, -20.24 GSE)

1.7d VMS-SunOS LZ version = v01
 DAILY Wed Feb 24, 2010
 Re = 196.96 (195.91, 0.34, -20.30 GSE)

WIND/WAVES Summary Plot (Page 1) for 23-FEB-2010, DOY = 54



```

RAD2
Antenna Ey .....
Mode LIN(1) .....
SUM/SEP SEP .....
Toggle OFF .....

RAD1
Antenna Ex .....
Mode LIS(2,4) .....
SUM/SEP SUM .....
Toggle OFF .....

TNR
Antenna ExEy .....
Mode A-32 .....
Sweep ACE .....
  
```