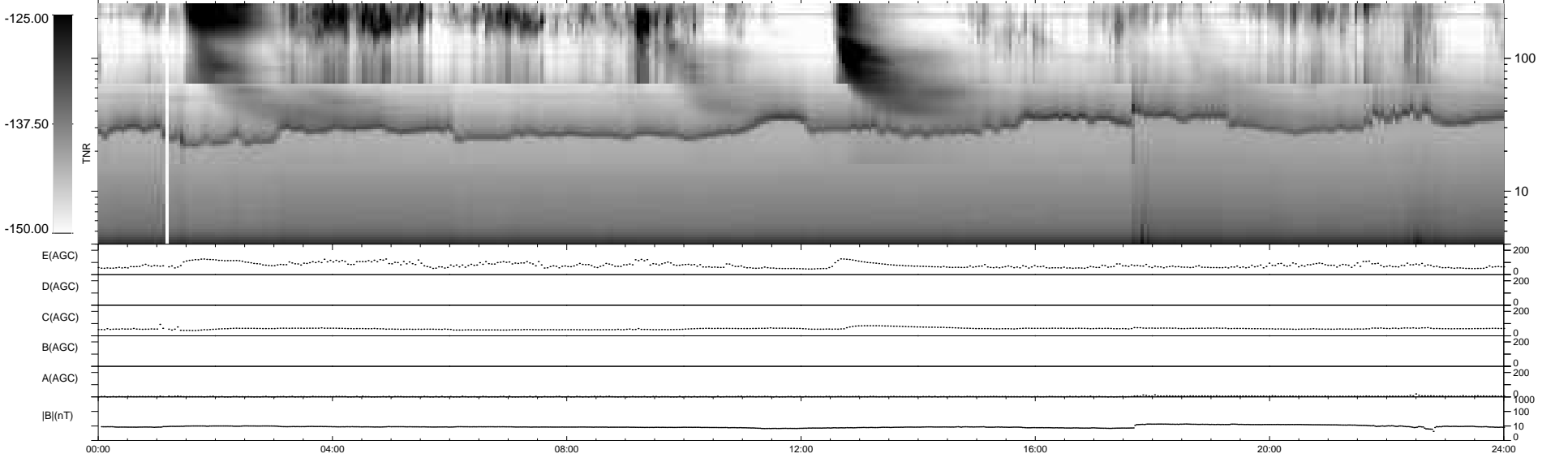
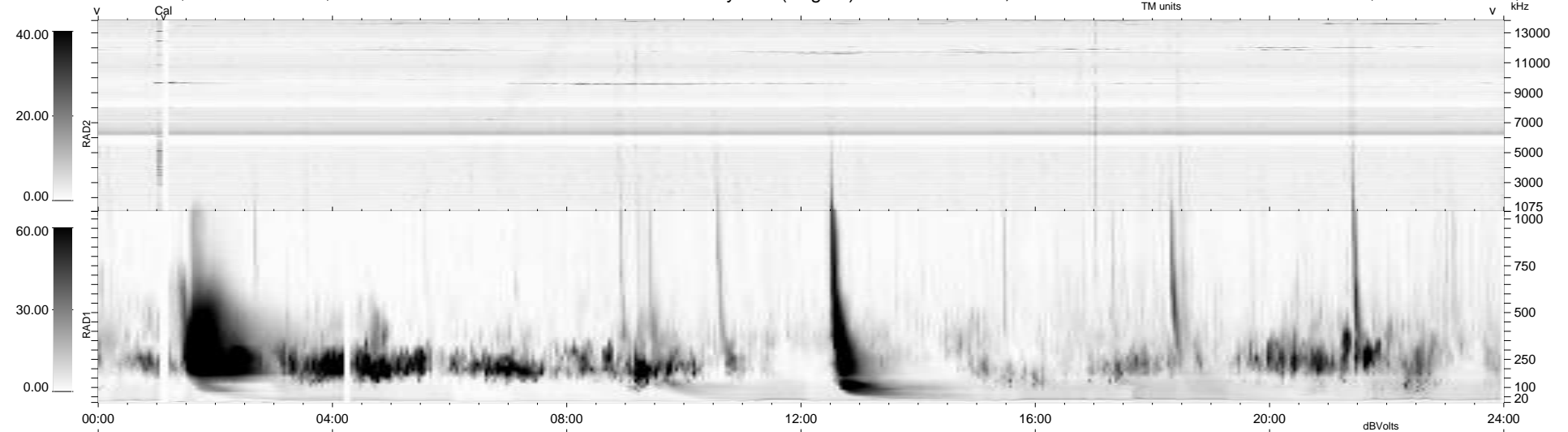


11 bad + 928 good MF/939MF projected (98%) - 0 missing MFs  
 Avg interval = 180 secs  
 Re = 200.90 (197.27, -33.22, -18.55 GSE)

1.7d VMS-SunOS LZ version = v01  
 DAILY Tue Feb 16, 2010  
 Re = 200.21 (197.11, -29.58, -18.87 GSE)

WIND/WAVES Summary Plot (Page 1) for 15-FEB-2010, DOY = 46



RAD2  
 Antenna Ey .....  
 Mode LIN(1) .....  
 SUM/SEP SEP .....  
 Toggle OFF .....  
 RAD1  
 Antenna Ex .....  
 Mode LIS(2,4) .....  
 SUM/SEP SUM .....  
 Toggle OFF .....  
 TNR  
 Antenna ExEy .....  
 Mode A-32 .....  
 Sweep ACE .....