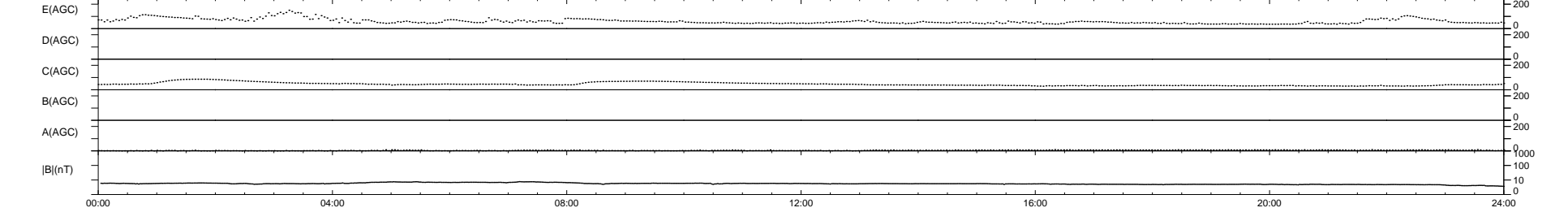
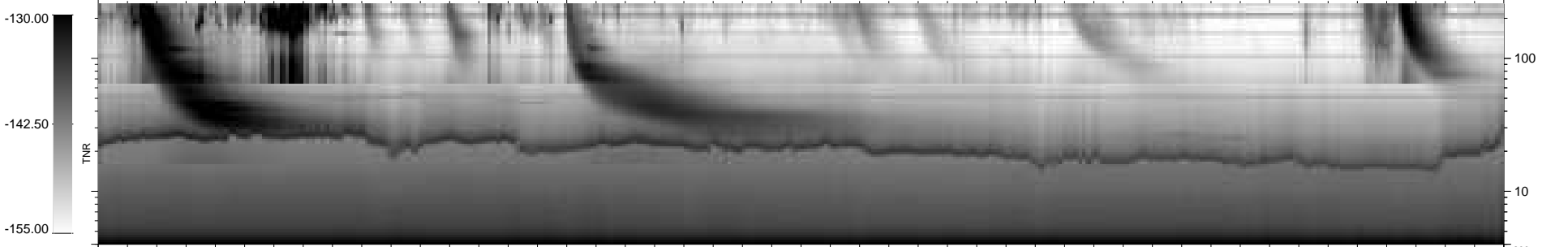
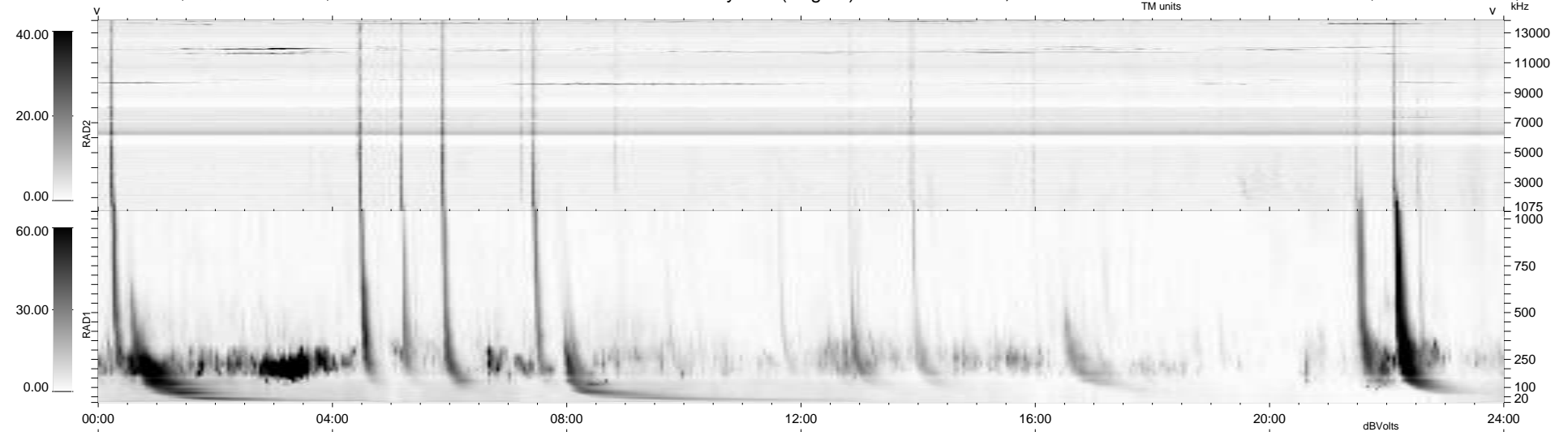


7 bad + 932 good MF/939MF projected (99%) - 0 missing MFs  
 Avg interval = 180 secs  
 Re = 205.00 (197.96, -50.63, -16.47 GSE)

1.7d VMS-SunOS LZ version = v03  
 DAILY Mon Feb 15, 2010  
 Re = 204.12 (197.83, -47.34, -16.94 GSE)

### WIND/WAVES Summary Plot (Page 1) for 10-FEB-2010, DOY = 41



```

RAD2
Antenna Ey .....
Mode LIN(1) .....
SUM/SEP SEP .....
Toggle OFF .....

RAD1
Antenna Ex .....
Mode LIS(2,4) .....
SUM/SEP SUM .....
Toggle OFF .....

TNR
Antenna ExEy .....
Mode A-32 .....
Sweep ACE .....
  
```