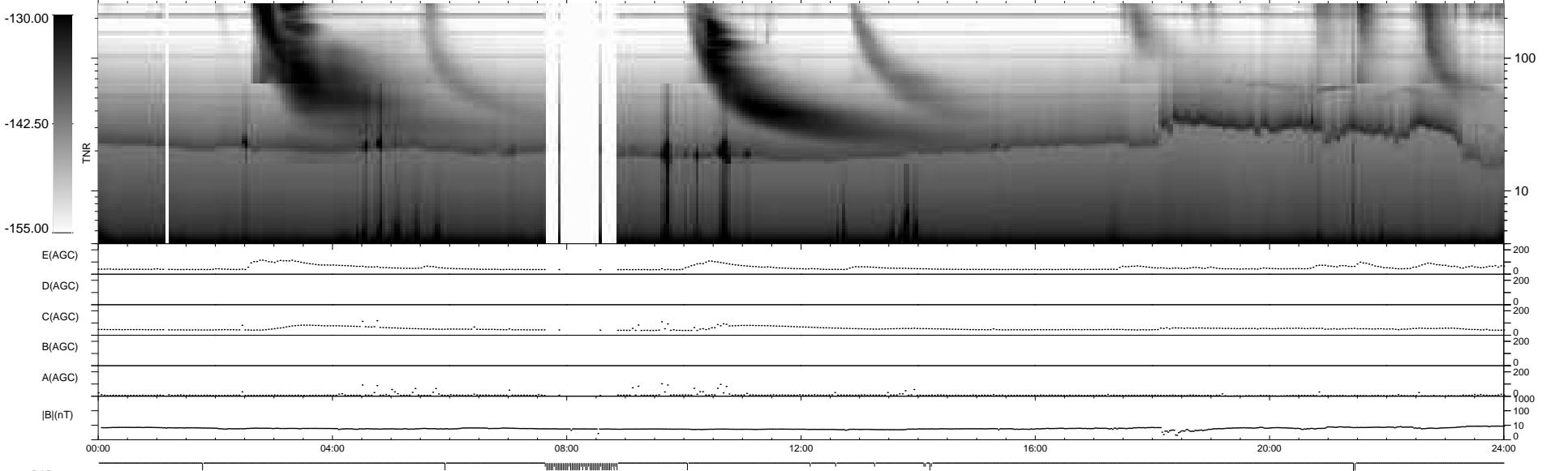
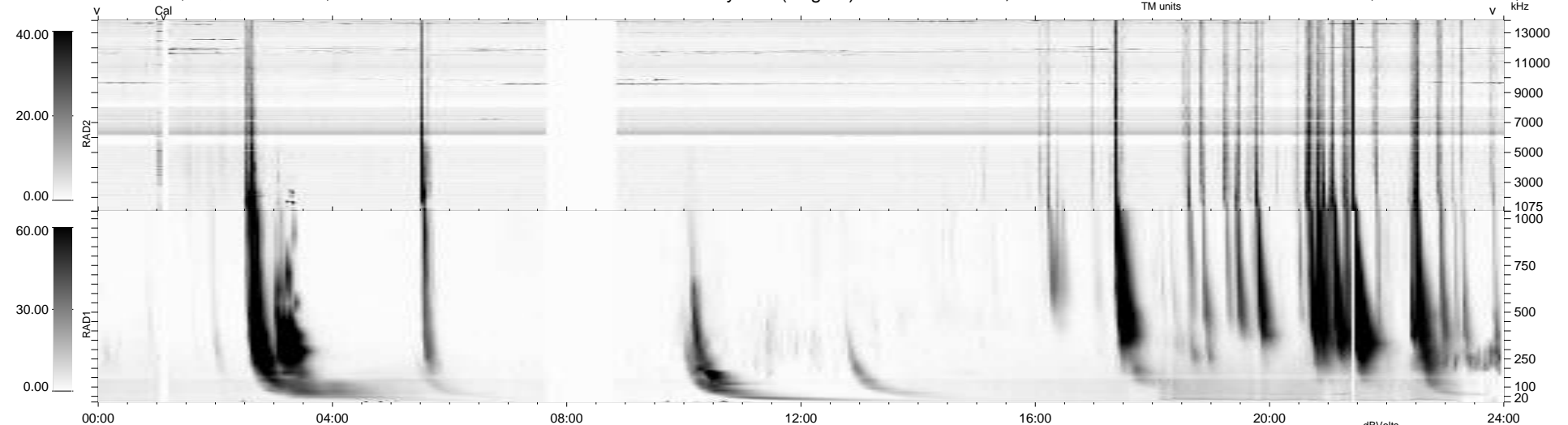


61 bad + 878 good MF/939MF projected (93%) - 0 missing MFs  
 Avg interval = 180 secs  
 Re = 207.84 (198.44, -59.97, -14.88 GSE)

1.7d VMS-SunOS LZ version = v01  
 DAILY Mon Feb 8, 2010  
 Re = 206.87 (198.26, -56.99, -15.43 GSE)

### WIND/WAVES Summary Plot (Page 1) for 07-FEB-2010, DOY = 38



RAD2  
 Antenna Ey  
 Mode LIN(1)  
 SUM/SEP SEP  
 Toggle OFF

RAD1  
 Antenna Ex  
 Mode LIS(2,4)  
 SUM/SEP SUM  
 Toggle OFF

TNR  
 Antenna ExEy  
 Mode A-32  
 Sweep ACE