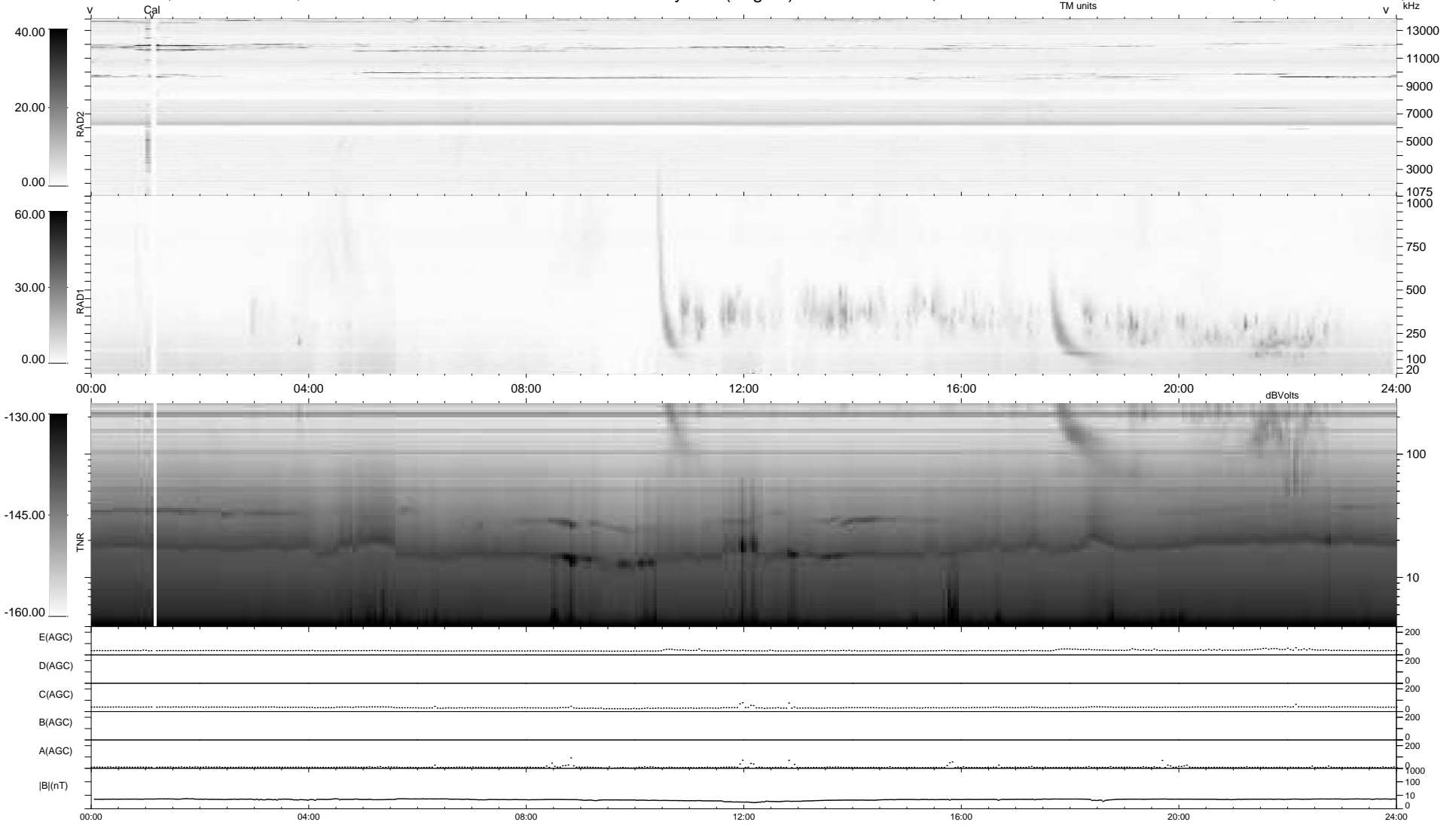


5 bad + 934 good MF/939MF projected (99%) - 0 missing MFs  
 Avg interval = 180 secs  
 Re = 227.66 (208.31, -91.79, -3.28 GSE)

1.7d VMS-SunOS LZ version = v01  
 DAILY Sun Jan 24, 2010  
 Re = 226.25 (207.29, -90.57, -4.07 GSE)

### WIND/WAVES Summary Plot (Page 1) for 22-JAN-2010, DOY = 22



RAD2  
 Antenna Ey  
 Mode LIN(1)  
 SUM/SEP SEP  
 Toggle OFF

RAD1  
 Antenna Ex  
 Mode LIS(2,4)  
 SUM/SEP SUM  
 Toggle OFF

TNR  
 Antenna ExEy  
 Mode A-32  
 Sweep ACE