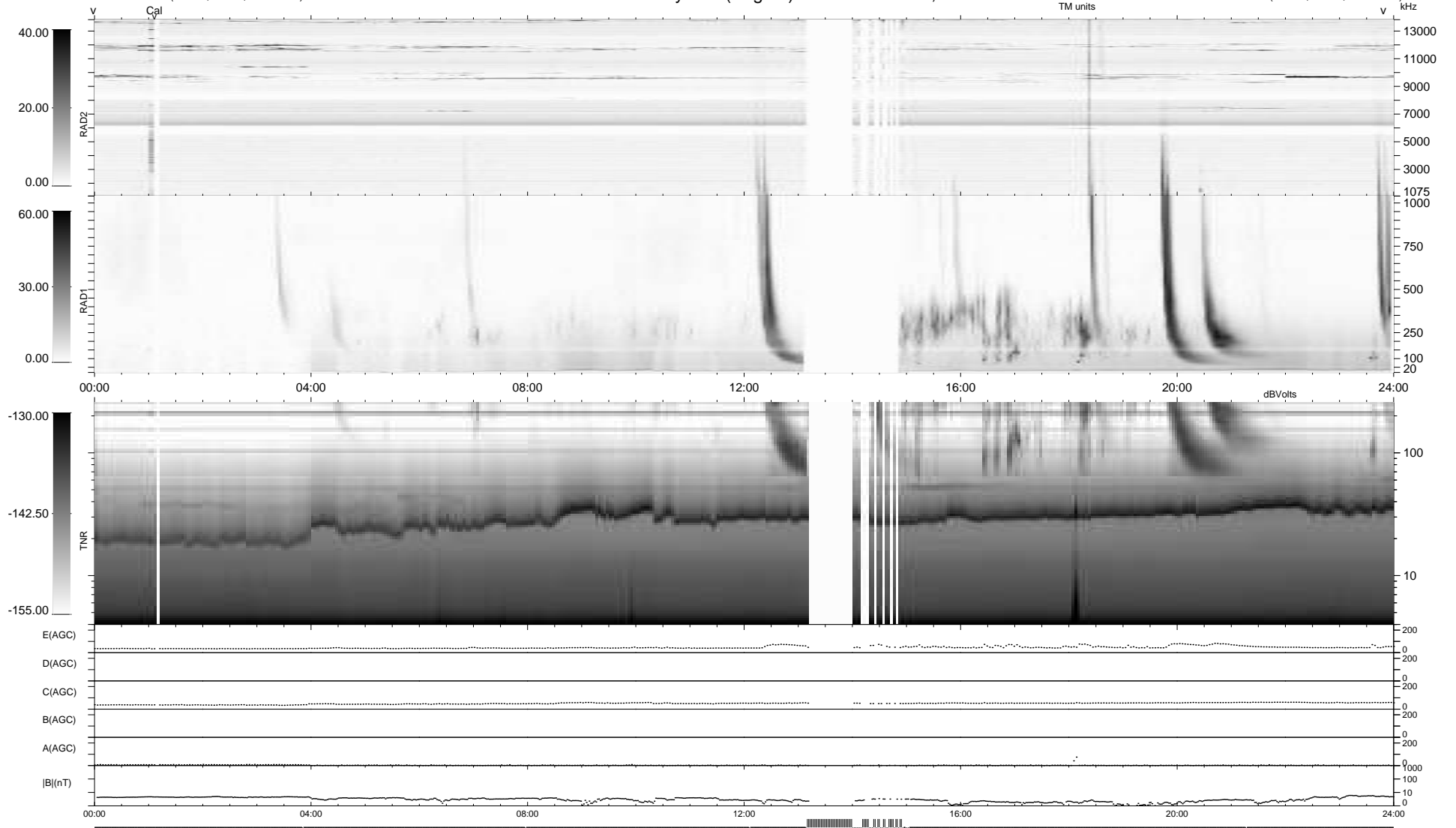


26 bad + 861 good MF/939MF projected (91%) - 52 missing MFs
 Avg interval = 180 secs
 Re = 233.15 (212.60, -95.72, -0.07 GSE)

1.7d VMS-SunOS LZ version = v02
 DAILY Mon Jan 25, 2010
 Re = 231.83 (211.52, -94.90, -0.86 GSE)

WIND/WAVES Summary Plot (Page 1) for 18-JAN-2010, DOY = 18



```

RAD2
Antenna  Ey .....
Mode     LIN(1) .....
SUM/SEP  SEP .....
Toggle   OFF .....

RAD1
Antenna  Ex .....
Mode     LIS(2,4) .....
SUM/SEP  SUM .....
Toggle   OFF .....

TNR
Antenna  ExEy .....
Mode     A-32 .....
Sweep    ACE .....
  
```