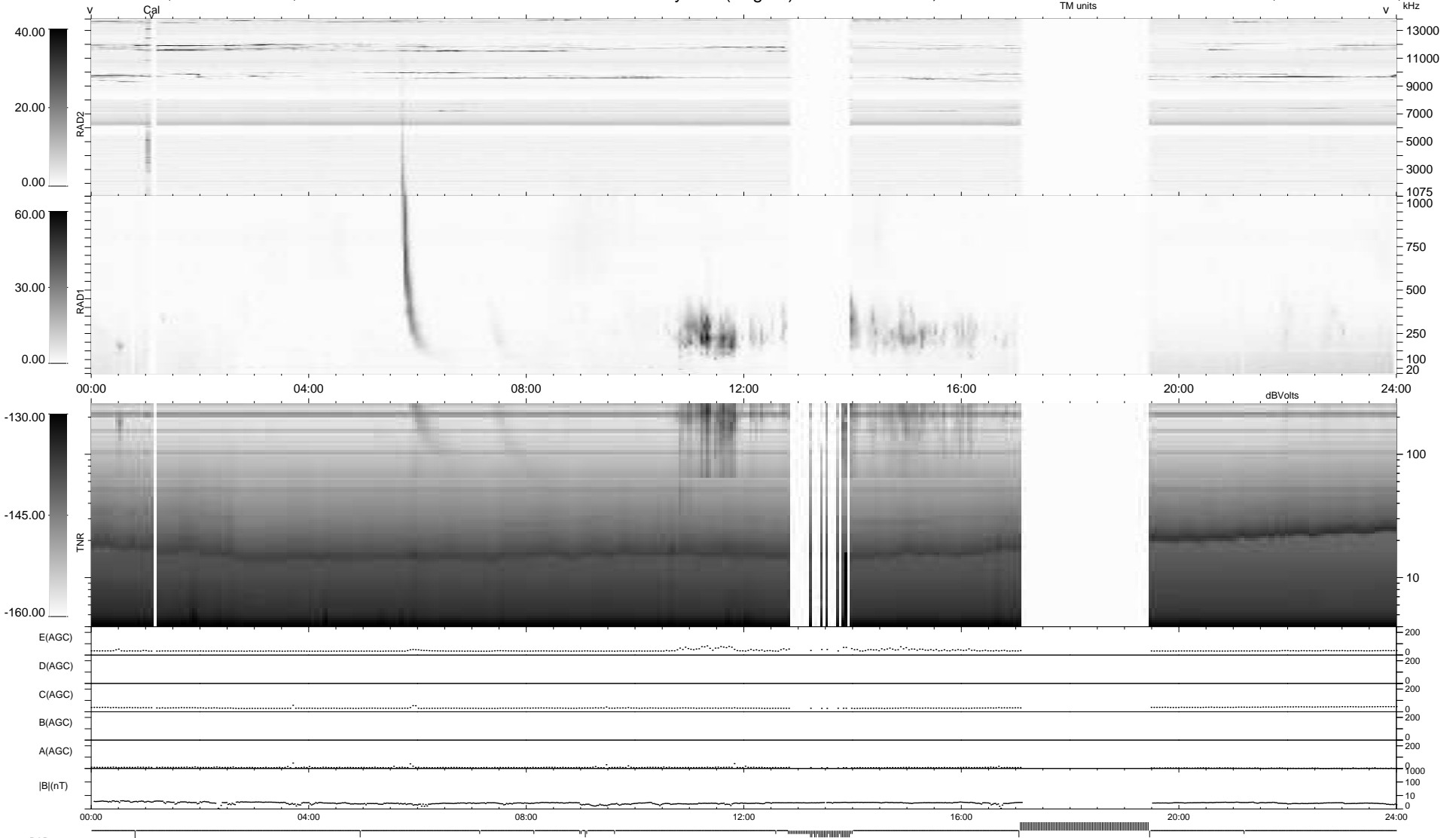


60 bad + 786 good MF/939MF projected (83%) - 93 missing MFs  
 Avg interval = 180 secs  
 Re = -235.69 (214.78, -97.04, 1.53 GSE)

1.7d VMS-SunOS LZ version = v01  
 DAILY Sun Jan 17, 2010  
 Re = 234.45 (213.70, -96.44, 0.74 GSE)

### WIND/WAVES Summary Plot (Page 1) for 16-JAN-2010, DOY = 16



```

RAD2
Antenna Ey .....
Mode LIN(1) .....
SUM/SEP SEP .....
Toggle OFF .....

RAD1
Antenna Ex .....
Mode LIS(2,4) .....
SUM/SEP SUM .....
Toggle OFF .....

TNR
Antenna ExEy .....
Mode A-32 .....
Sweep ACE .....
  
```