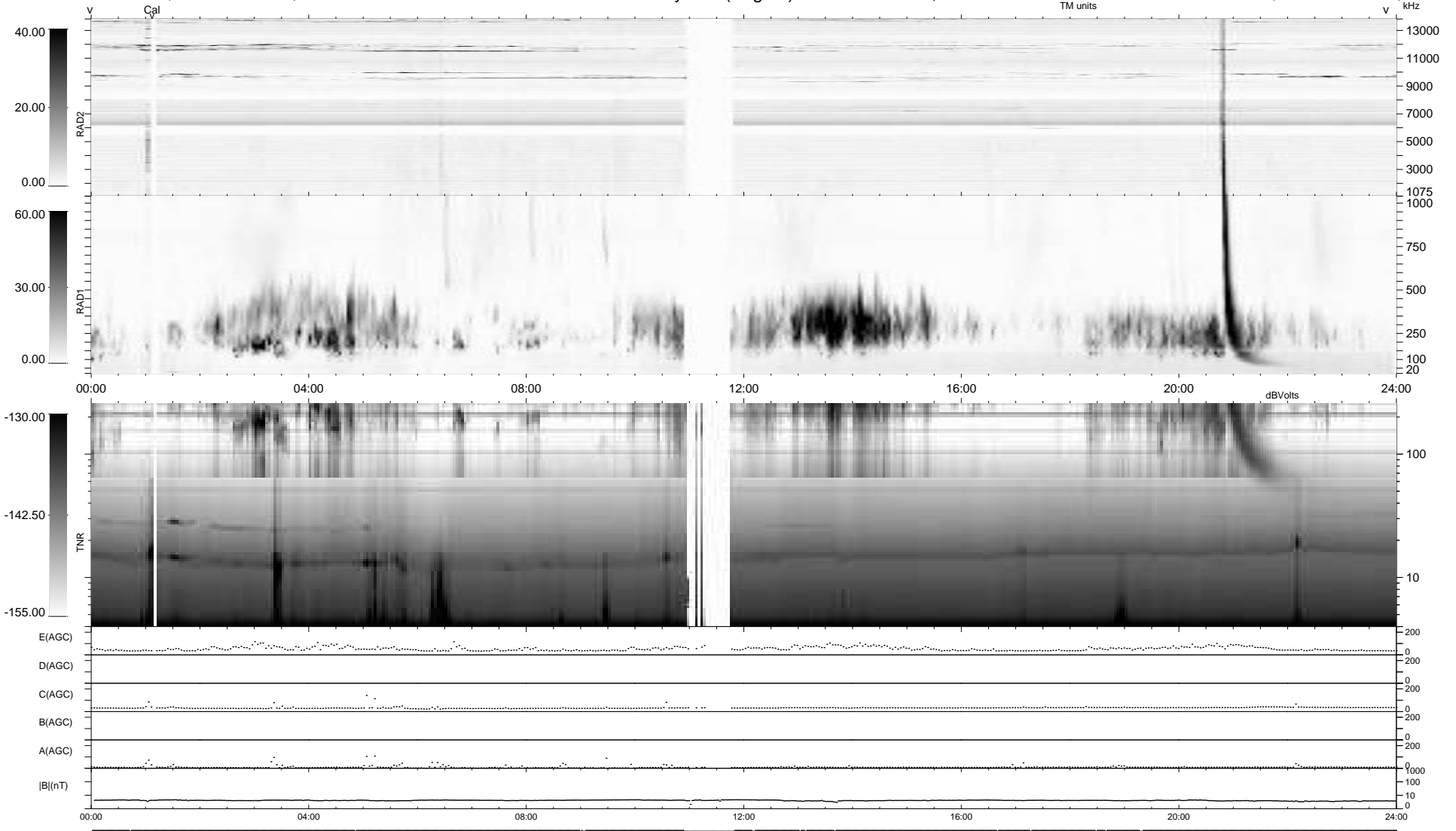


52 bad + 887 good MF/939MF projected (94%) - 0 missing MFs  
 Avg interval = 180 secs  
 Re = 238.02 (216.95, -97.86, 3.11 GSE)

1.7d VMS-SunOS LZ version = v01  
 DAILY Fri Jan 15, 2010  
 Re = 236.89 (215.88, -97.52, 2.33 GSE)

### WIND/WAVES Summary Plot (Page 1) for 14-JAN-2010, DOY = 14



RAD2  
 Antenna Ey .....  
 Mode LIN(1) .....  
 SUM/SEP SEP .....  
 Toggle OFF .....  
 RAD1  
 Antenna Ex .....  
 Mode LIS(2,4) .....  
 SUM/SEP SUM .....  
 Toggle OFF .....  
 TNR  
 Antenna ExEy .....  
 Mode A-32 .....  
 Sweep ACE .....