

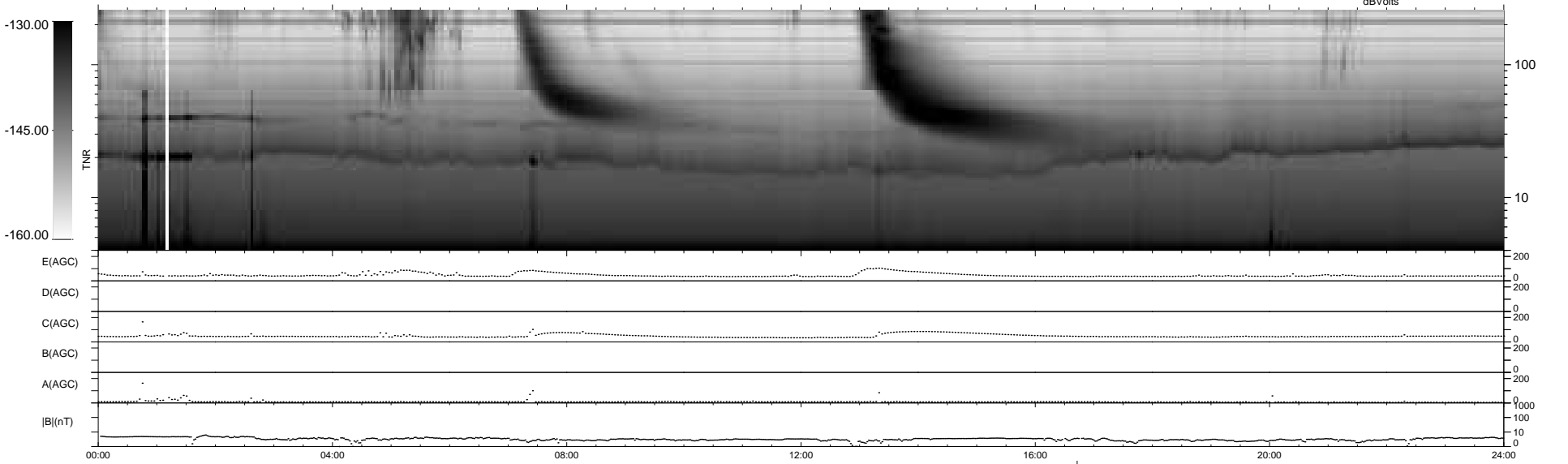
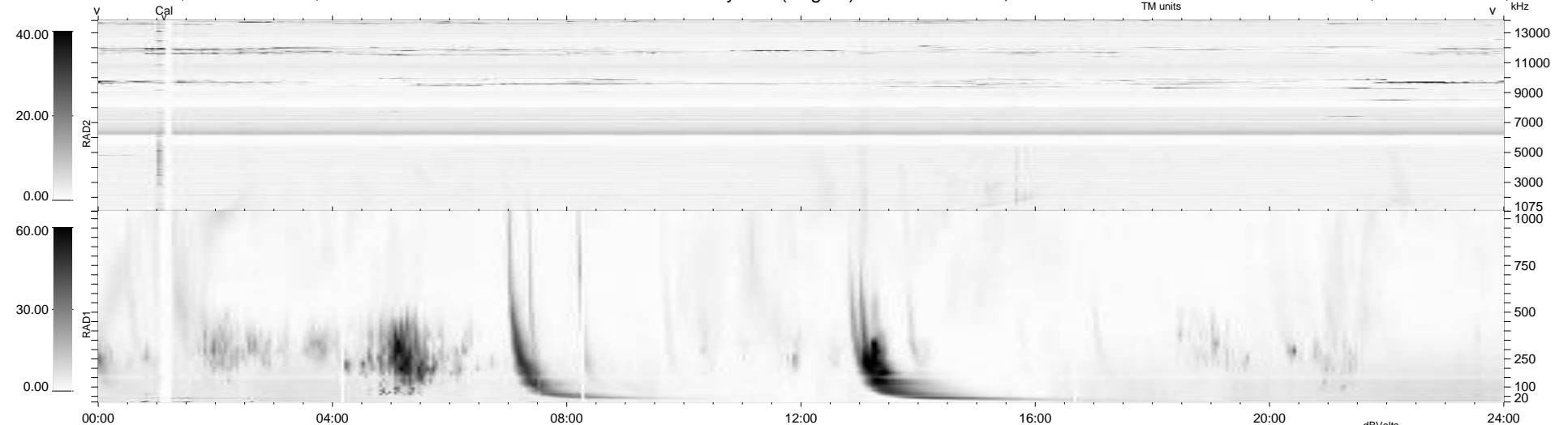
17 bad + 922 good MF/940MF projected (98%) - 1 missing MF
 Avg interval = 180 secs
 Re = 240.13 (219.10, -98.16, 4.69 GSE)

1.7d VMS-SunOS

LZ version = v02

WIND/WAVES Summary Plot (Page 1) for 12-JAN-2010, DOY = 12

DAILY Thu Jan 14, 2010
 Re = 239.11 (218.04, -98.08, 3.91 GSE)



```

RAD2
Antenna Ey .....
Mode LIN(1) .....
SUM/SEP SEP .....
Toggle OFF .....

RAD1
Antenna Ex .....
Mode LIS(2,4) .....
SUM/SEP SUM .....
Toggle OFF .....

TNR
Antenna ExEy .....
Mode A-32 .....
Sweep ACE .....
  
```